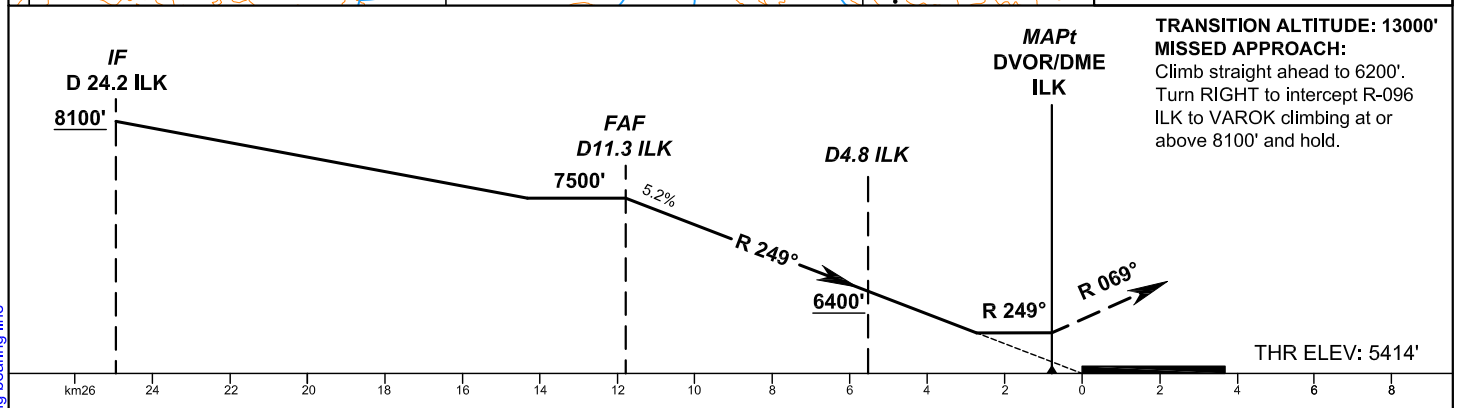
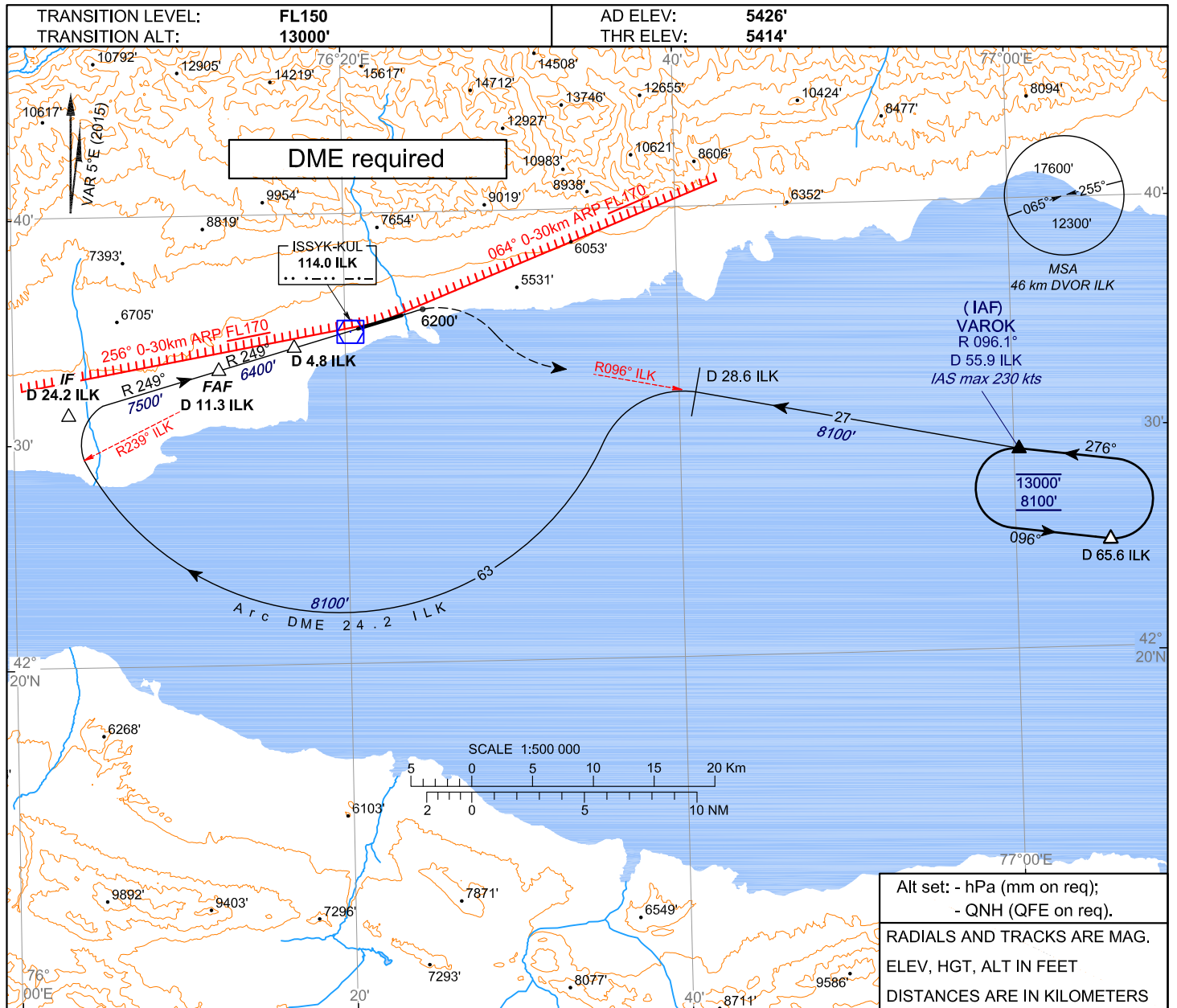


**INSTRUMENT
APPROACH
CHART - ICAO**

TOWER 118.7

**KYRGYZSTAN
ISSYK-KUL
VOR/DME RWY 07**



TRANSITION ALTITUDE: 13000'
MISSED APPROACH:
Climb straight ahead to 6200'.
Turn RIGHT to intercept R-096
ILK to VAROK climbing at or
above 8100' and hold.

| | |
|----------|--------------|
| ACFT CAT | OCA/H |
| | DVOR/DME |
| A | 6140' (730') |
| B | |
| C | |
| D | |

| | | | | | | | | |
|-----------------|--------|-----|-----|-----|-----|-----|-----|-----|
| GROUND SPEED | KT | 70 | 90 | 100 | 120 | 140 | 160 | 180 |
| RATE OF DESCENT | ft/min | 372 | 478 | 531 | 637 | 743 | 849 | 955 |
| MAPt: DVOR ILK | | | | | | | | |

| | | | | |
|-------------|------------------|------------------|------------------|-----------------|
| DME ILK, km | 10.0 | 8.0 | 6.0 | 4.0 |
| ALTITUDE | 7290' (1880') | 6940' (1530') | 6600' (1190') | 6260' (850') |

CHANGE: headers and footers, limiting bearing line