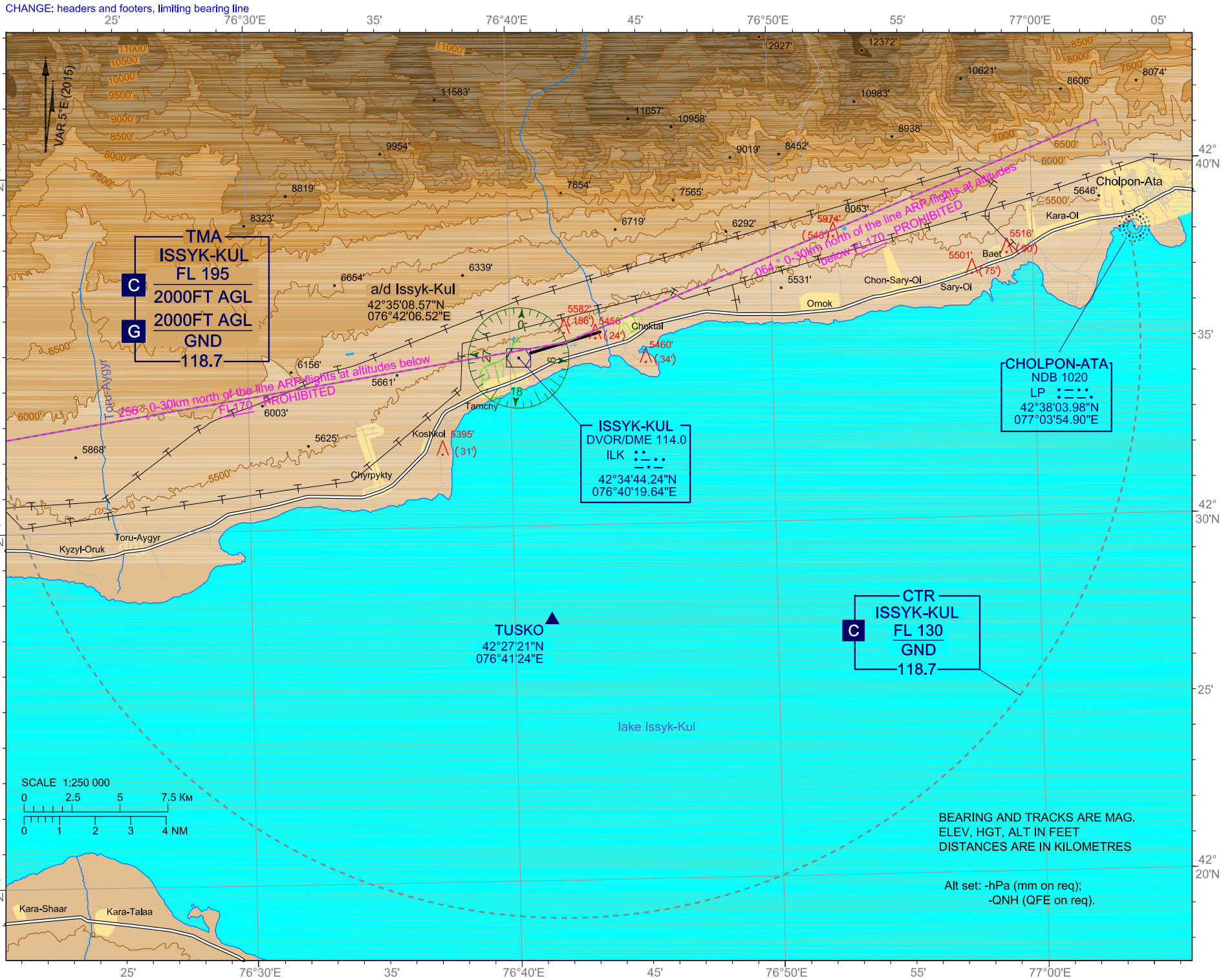


VISUAL
APPROACH
CHART - ICAO

AERODROME ELEV: 5426'
TRANSITION LEVEL: FL150
TRANSITION ALT: 13000'

TOWER 118.7

KYRGYZSTAN
ISSYK-KUL



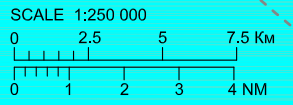
TMA
ISSYK-KUL
FL 195
2000FT AGL
2000FT AGL
GND
118.7

ISSYK-KUL
DVOR/DME 114.0
ILK
42°34'44.24"N
076°40'19.64"E

CHOLPON-ATA
NDB 1020
LP
42°38'03.98"N
077°03'54.90"E

CTR
ISSYK-KUL
FL 130
GND
118.7

TUSKO
42°27'21"N
076°41'24"E



BEARING AND TRACKS ARE MAG. ELEV, HGT, ALT IN FEET
 DISTANCES ARE IN KILOMETRES

Alt set: -hPa (mm on req);
 -QNH (QFE on req).

CHANGE: headers and footers, limiting bearing line