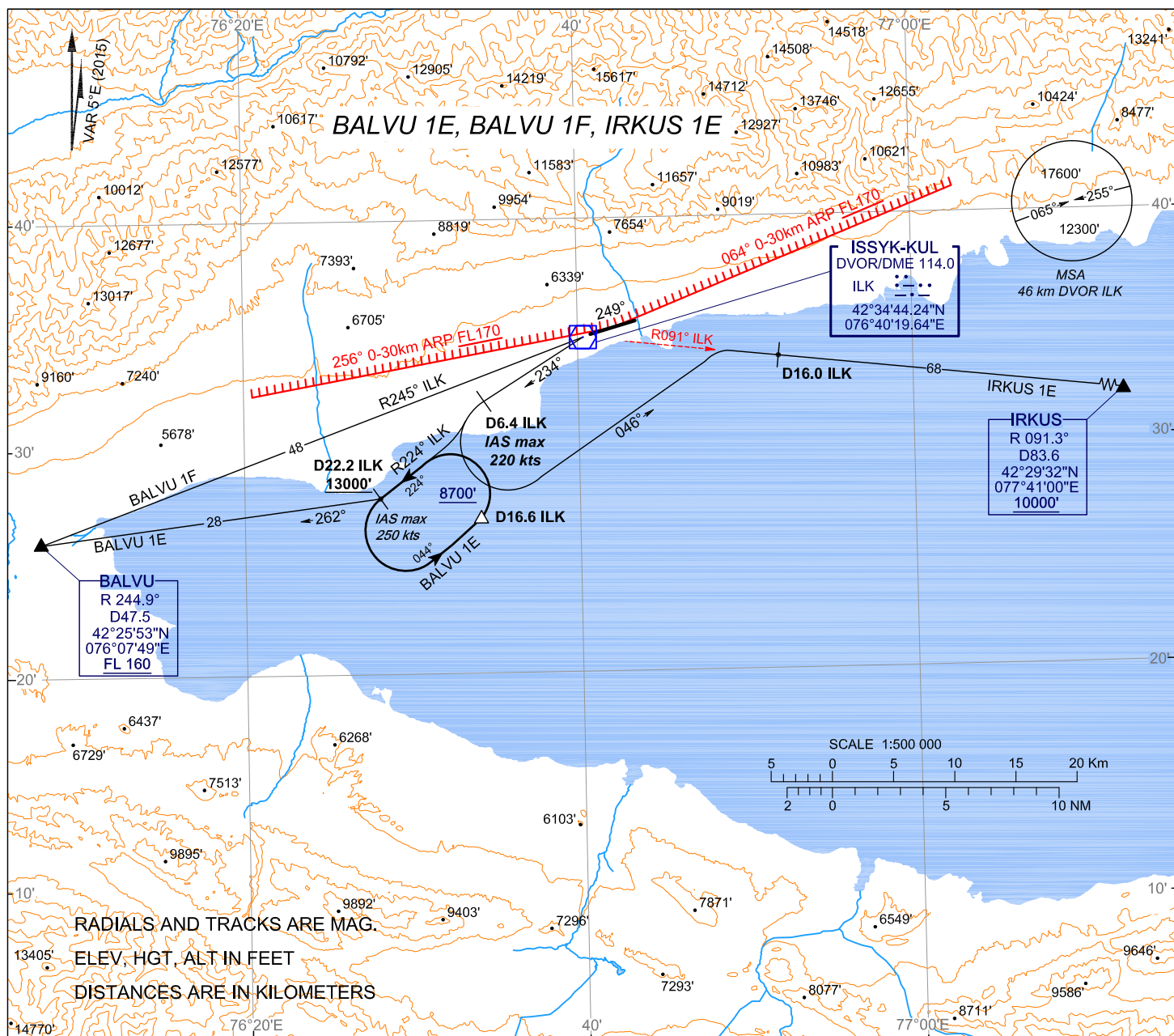


STANDARD DEPARTURE CHART
INSTRUMENT (SID) - ICAO

TRANSITION
ALTITUDE: **13000'**

TOWER **118.7**

KYRGYZSTAN
ISSYK-KUL
RWY 25



GROUND SPEED	KT	75	100	150	200	250
Climb Gradient 4.5%						
RATE OF CLIMB	ft/min	342	456	684	911	1139
Climb Gradient 6.8%						
RATE OF CLIMB	ft/min	516	689	1033	1377	1722

BALVU 1E require ATC guidance on track from D22.2 ILK to BALVU

This SIDs require minimum climb gradients of:

- IRKUS 1E - 4.5% up to 6300';
- BALVU 1E - 4.5% up to 8700';
- BALVU 1F - 6.8% up to FL160

STANDARD DEPARTURE ROUTES - INSTRUMENT (SID) ISSYK-KUL RWY 25

IRKUS 1E	After take-off on track 234° MAG on D6.4 ILK turn LEFT (IASmax 220kts) on track 046° MAG with access to R091°ILK and proceed to IRKUS. Cross IRKUS not below 10000'.
BALVU 1E	After take-off on track 234° MAG on D6.4 ILK turn LEFT (IASmax 220kts) with access to R224°ILK reach D22.2 ILK climbing not below 8700'. Further climbing not below 13000' by scheme with two twin left turn at 180° and line limiting the outbound leg D16.6 ILK. After climbing not below 13000' on D22.2 ILK turn RIGHT on track 262° MAG and proceed to BALVU. Cross BALVU not below FL160.
BALVU 1F	Climbing with R245°ILK to BALVU. Cross BALVU not below FL160.

CHANGE: headers and footers, add SID description, limiting bearing line