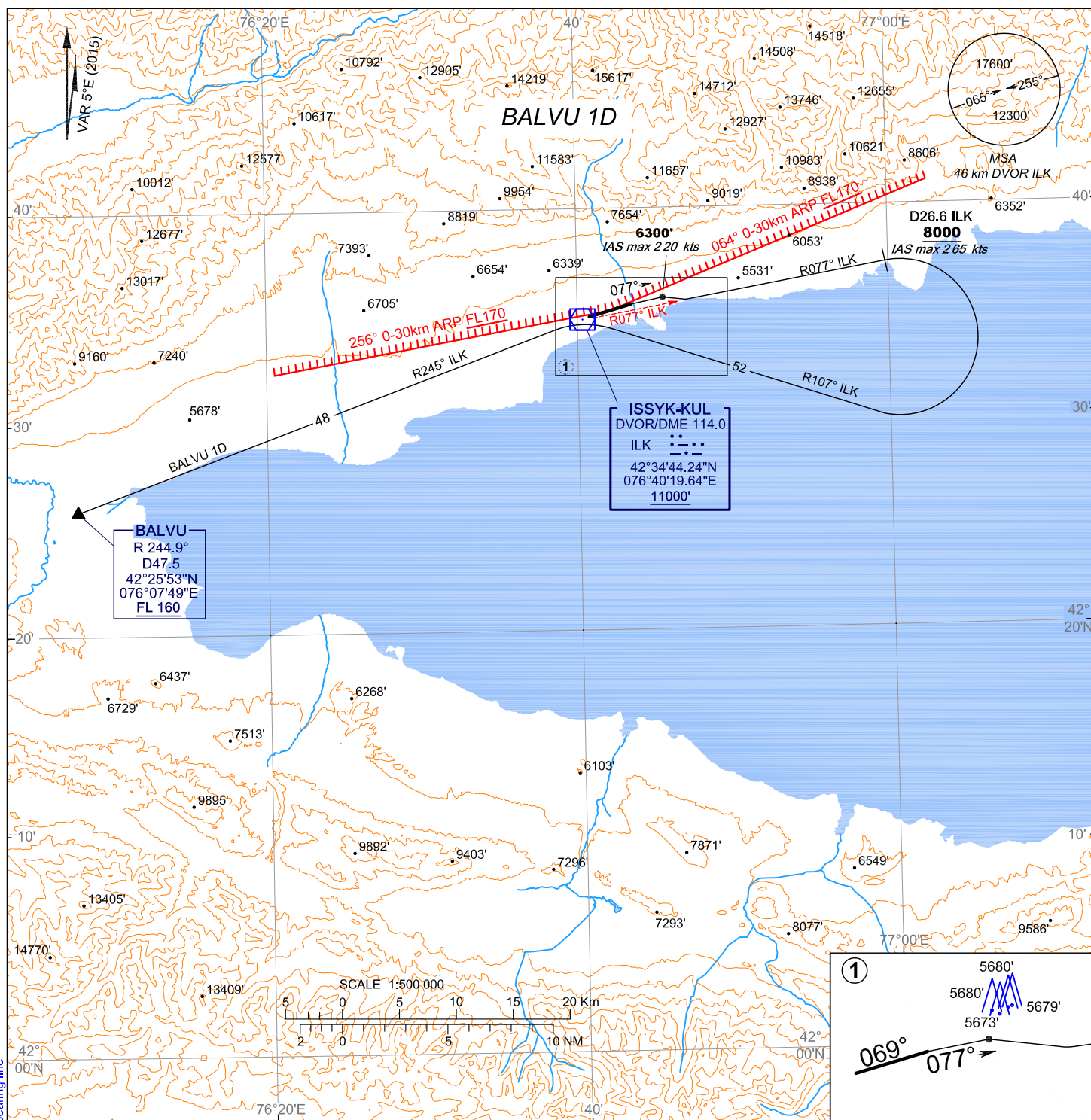


STANDARD DEPARTURE CHART
 INSTRUMENT (SID) - ICAO

TRANSITION
 ALTITUDE: 13000'

KYRGYZSTAN
 ISSYK-KUL
 RWY 07



ISSYK-KUL TOWER: 118.7

This SID requires minimum climb gradients 4.3% up to 6500'

RADIALS AND TRACKS ARE MAG.
 ELEV, HGT, ALT IN FEET
 DISTANCES ARE IN KILOMETERS

GROUND SPEED	KT	75	100	150	200	250
Climb Gradient 4.3%						
RATE OF CLIMB	ft/min	327	435	653	871	1089

STANDARD DEPARTURE ROUTE - INSTRUMENT (SID) ISSYK-KUL RWY 07

BALVU 1D

After take-off on track 077° MAG climb 6300', turn RIGHT (IASmax 220kts) with access to R077°ILK and climb 8000' or above, on D26.6 ILK turn RIGHT (IASmax 265kts) proceed to DVOR with R107°ILK, climb 11000' or above.
 Further turn LEFT with access to R245°ILK and proceed to BALVU.
 Cross BALVU not below FL160.

CHANGE: headers and footers, add SID description, limiting bearing line