

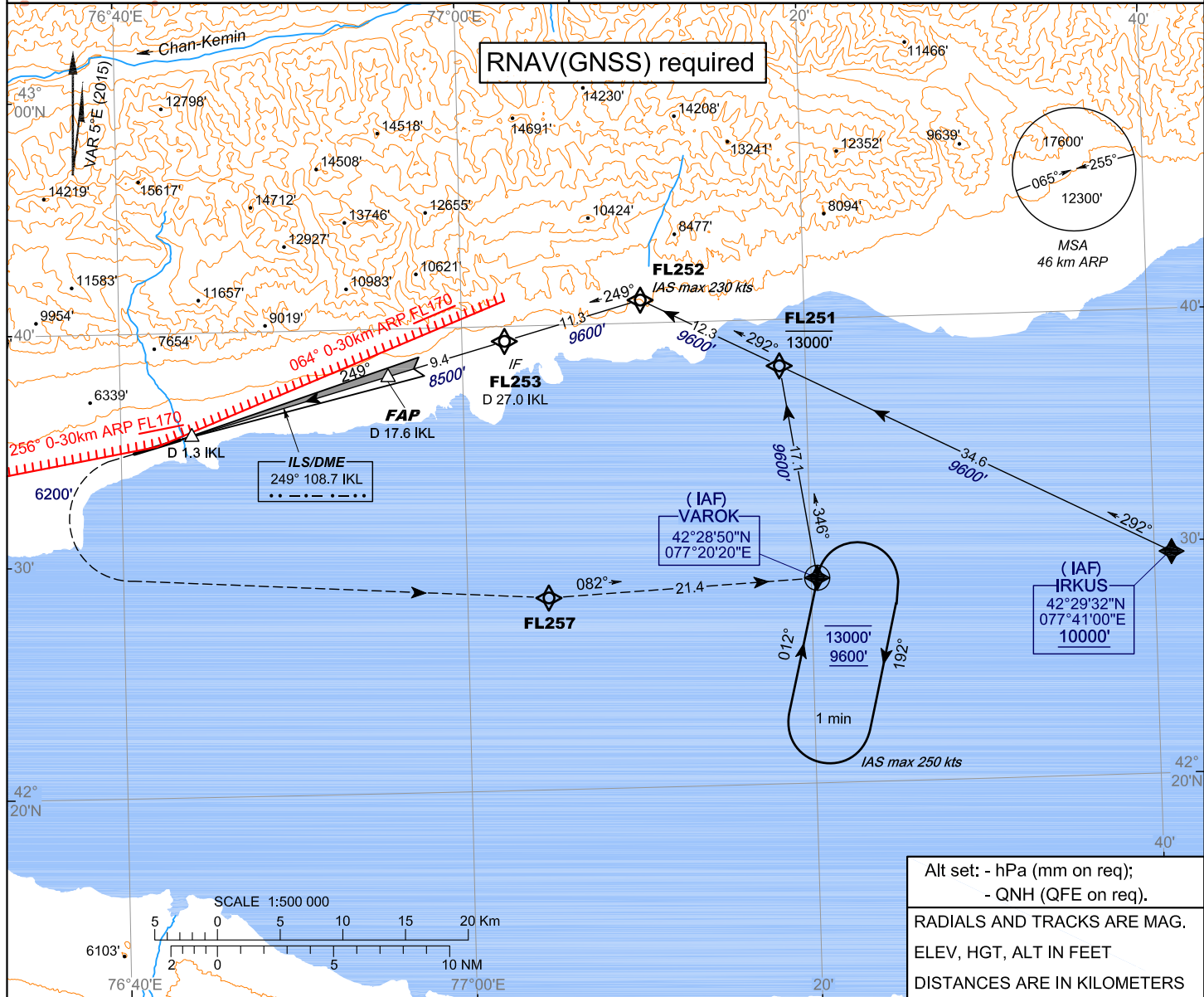
**INSTRUMENT
APPROACH
CHART - ICAO**

ILS/DME
249° 108.7 IKL
.....
CH 24X

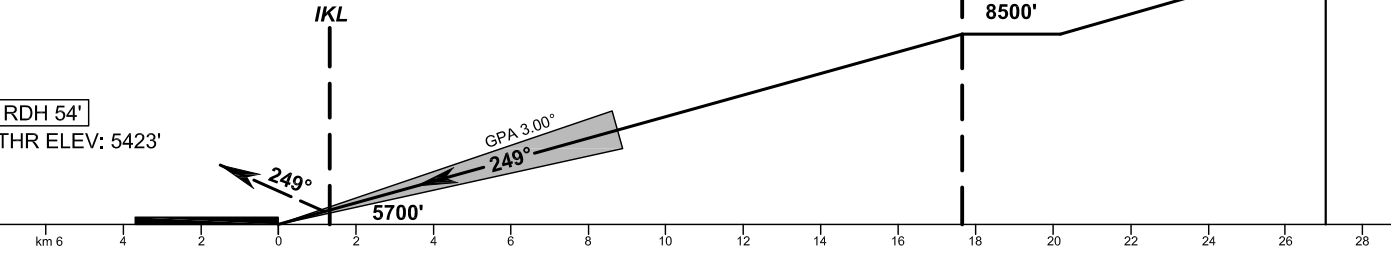
TOWER **118.7**

**KYRGYZSTAN
ISSYK-KUL
ILS DME-Z RWY 25**

TRANSITION LEVEL: **FL150** AD ELEV: **5426'**
TRANSITION ALT: **13000'** THR ELEV: **5423'**



MISSED APPROACH
Climb straight ahead to 6200'. Turn LEFT direct to FL257, to VAROK at or above 9600'.



ACFT CAT	OCA/H
	ILSDME
A	5626' (203')
B	5635' (212')
C	5643' (220')
D	5656' (232')

CHANGE: headers and footers, limiting bearing line

INSTRUMENT APPROACH
Route Data

KYRGYZSTAN
ISSYK-KUL
RWY 25

ILS DME Z RWY 25 from VAROK

Serial # / Procedure designator	Navigational performance	Path descriptor	Waypoint identifier	Waypoint coordinates	Fly- Over	True track [°] / Magnetic track [°]	Distance [km]	Turn direction	Upper limit [ft] / Lower limit [ft]	Speed limit [kts]	VPA [°]	TCH [ft]
ILSDME_ RWY 25 from VAROK	RNAV 1	IF	VAROK	42°28'50.0"N 077°20'20.0"E	N	-	-	-	13000 / 9600	250.0	-	-
ILSDME_ RWY 25 from VAROK	RNAV 1	TF	FL251	42°38'00.3"N 077°18'28.8"E	N	351.5 / 346	17.1	-	13000 / 9600	230.0	-	-
ILSDME_ RWY 25 from VAROK	RNAV 1	TF	FL252	42°40'59.5"N 077°10'28.2"E	N	296.8 / 292	12.3	-	- / 9600	230.0	-	-
ILSDME_ RWY 25 from VAROK	RNAV 1	TF	FL253	42°39'21.6"N 077°02'29.3"E	N	254.6 / 249	11.3	-	- / 9600	-	-	-
ILSDME_ RWY 25 from VAROK	-	CF	FAP 25	42°37'59.3"N 076°55'49.5"E	N	254.5 / 249	9.4	-	- / 8500	-	3.00	54
ILSDME_ RWY 25 from VAROK	-	CF	RWY25	42°35'25.3"N 076°43'26.7"E	Y	254.3 / 249	6.0	-	- / 5477	-	-	54
ILSDME_ RWY 25 from VAROK	-	CA	-	-	-	254.2 / 249	-	-	- / 6200	-	-	-
ILSDME_ RWY 25 from VAROK	RNAV 1	DF	FL257	42°28'16.0"N 077°04'43.0"E	N	-	-	L	-	-	-	-
ILSDME_ RWY 25 from VAROK	RNAV 1	TF	VAROK	42°28'50.0"N 077°20'20.0"E	N	087.1 / 082	21.4	-	- / 9600	250.0	-	-
ILSDME_ RWY 25 from VAROK	RNAV 1	HM	-	42°24'06.4"N 077°18'21.5"E	-	017.2 / 012	-	R	13000 / 9600	250.0	-	-

INSTRUMENT APPROACH
Route Data

KYRGYZSTAN
ISSYK-KUL
RWY 25

ILS DME Z RWY 25 from IRKUS

Serial # / Procedure designator	Navigational performance	Path descriptor	Waypoint identifier	Waypoint coordinates	Fly- Over	True track [°] / Magnetic track [°]	Distance [km]	Turn direction	Upper limit [ft] / Lower limit [ft]	Speed limit [kts]	VPA [°]	TCH [ft]
ILSDME_ RWY 25 from IRKUS	RNAV 1	IF	IRKUS	42°29'32.0"N 077°41'00.0"E	-	-	-	-	- / 10000	-	-	-
ILSDME_ RWY 25 from IRKUS	RNAV 1	TF	FL251	42°38'00.3"N 077°18'28.8"E	N	297.1 / 292	34.6	-	13000 / 9600	230.0	-	-
ILSDME_ RWY 25 from IRKUS	RNAV 1	TF	FL252	42°40'59.5"N 077°10'28.2"E	N	296.8 / 292	12.3	-	- / 9600	230.0	-	-
ILSDME_ RWY 25 from IRKUS	RNAV 1	TF	FL253	42°39'21.6"N 077°02'29.3"E	N	254.6 / 249	11.3	-	- / 9600	-	-	-
ILSDME_ RWY 25 from IRKUS	-	CF	FAP 25	42°37'59.3"N 076°55'49.5"E	N	254.5 / 249	9.4	-	- / 8500	-	3.00	54
ILSDME_ RWY 25 from IRKUS	-	CF	RWY25	42°35'25.3"N 076°43'26.7"E	Y	254.3 / 249	6.0	-	- / 5477	-	-	54
ILSDME_ RWY 25 from IRKUS	-	CA	-	-	-	254.2 / 249	-	-	- / 6200	-	-	-
ILSDME_ RWY 25 from IRKUS	RNAV 1	DF	FL257	42°28'16.0"N 077°04'43.0"E	N	-	-	L	-	-	-	-
ILSDME_ RWY 25 from IRKUS	RNAV 1	TF	VAROK	42°28'50.0"N 077°20'20.0"E	N	087.1 / 082	21.4	-	- / 9600	250.0	-	-
ILSDME_ RWY 25 from IRKUS	RNAV 1	HM	-	42°24'06.4"N 077°18'21.5"E	-	017.2 / 012	-	R	13000 / 9600	250.0	-	-

THIS PAGE INTENTIONALLY LEFT BLANK