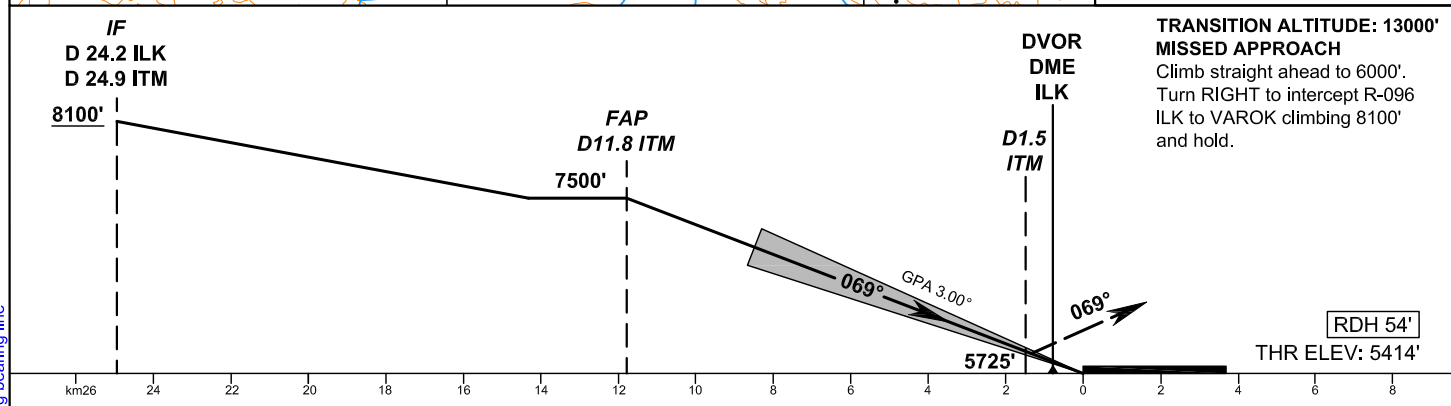
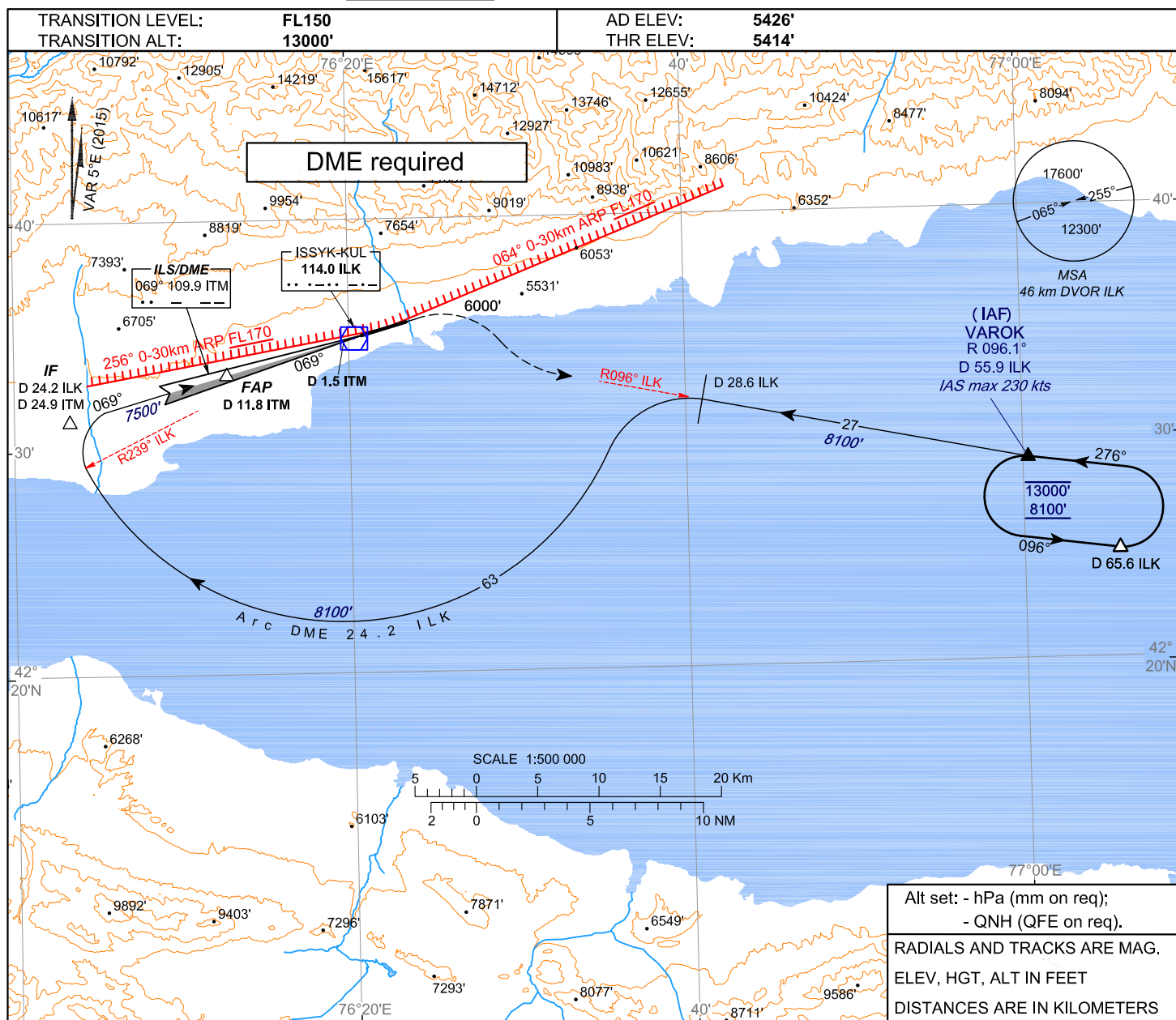


**INSTRUMENT  
APPROACH  
CHART - ICAO**

**ILS/DME**  
069° 109.9 ITM  
CH 36X

**TOWER** 118.7

**KYRGYZSTAN  
ISSYK-KUL  
ILS DME-Y RWY 07**



ACFT CAT	OCA/H	
	ILSDME	
	MACG 2.5%	MACG 4%
A	5683' (269')	5601' (187')
B	5693' (279')	5610' (196')
C	5706' (292')	5619' (205')
D	5716' (302')	5631' (217')

CHANGE: headers and footers, limiting bearing line