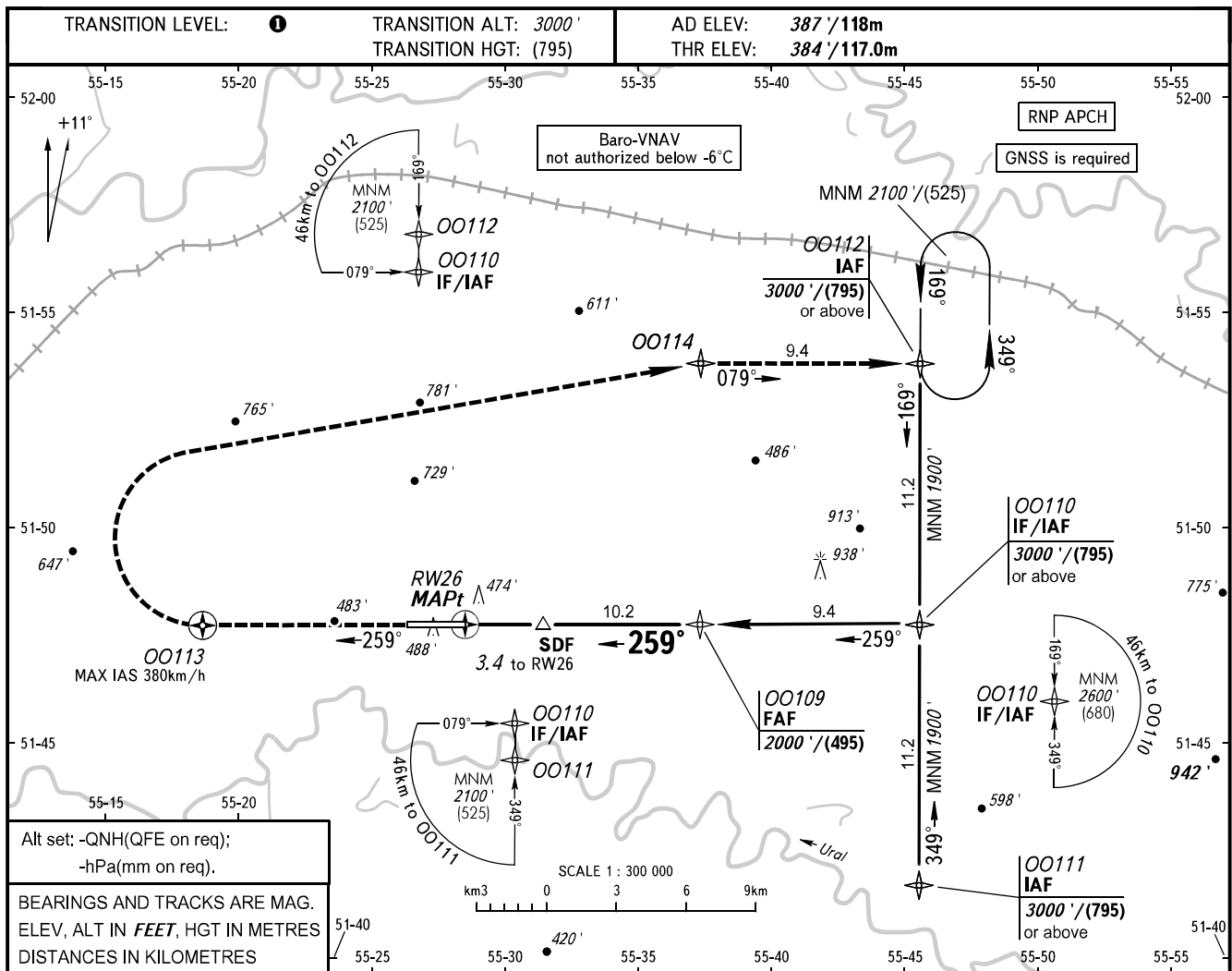


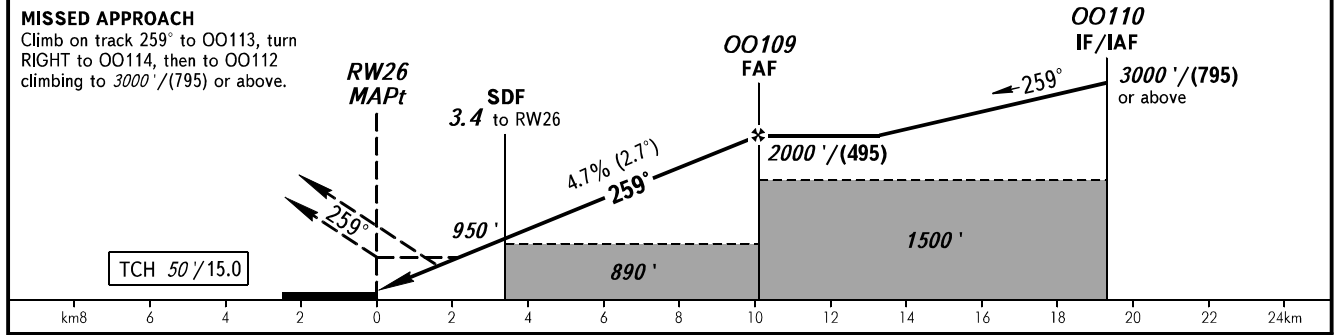
**INSTRUMENT
APPROACH
CHART - ICAO**

**ORENBURG, RUSSIA
ORENBURG
RNP RWY 26**

RADAR	120.400
TOWER	128.000



DIST to RW26	2.0	4.0	6.0	8.0	10.2
ALTITUDE/HEIGHT	740'/(110)	1050'/(205)	1360'/(300)	1670'/(395)	2000'/(495)



OCA(H)		A	B	C	D
Straight-in	LNAV/VNAV	603' (219')	615' (231')	623' (239')	649' (266')
	LNAV	720' (340')	720' (340')	720' (340')	720' (340')
Circling		840' (460')	970' (590')	1130' (740')	1180' (790')

① TRANSITION LEVEL:
 - FL040 when QNH is 1013 hPa (760mm mercury column) or above;
 - FL050 when QNH is 977 hPa (733mm mercury column) or above, but less than 1013 hPa (760mm mercury column);
 - FL060 when QNH is less than 977 hPa (733mm mercury column).
NOTE
 Timing not authorized for defining MAPt.

GROUND SPEED	km/h	150	180	210	240	270	300	330	360	390
RATE OF DESCENT	m/s	2.0	2.4	2.7	3.1	3.5	3.9	4.3	4.7	5.1
	ft/min	385	463	540	617	694	771	848	925	1002