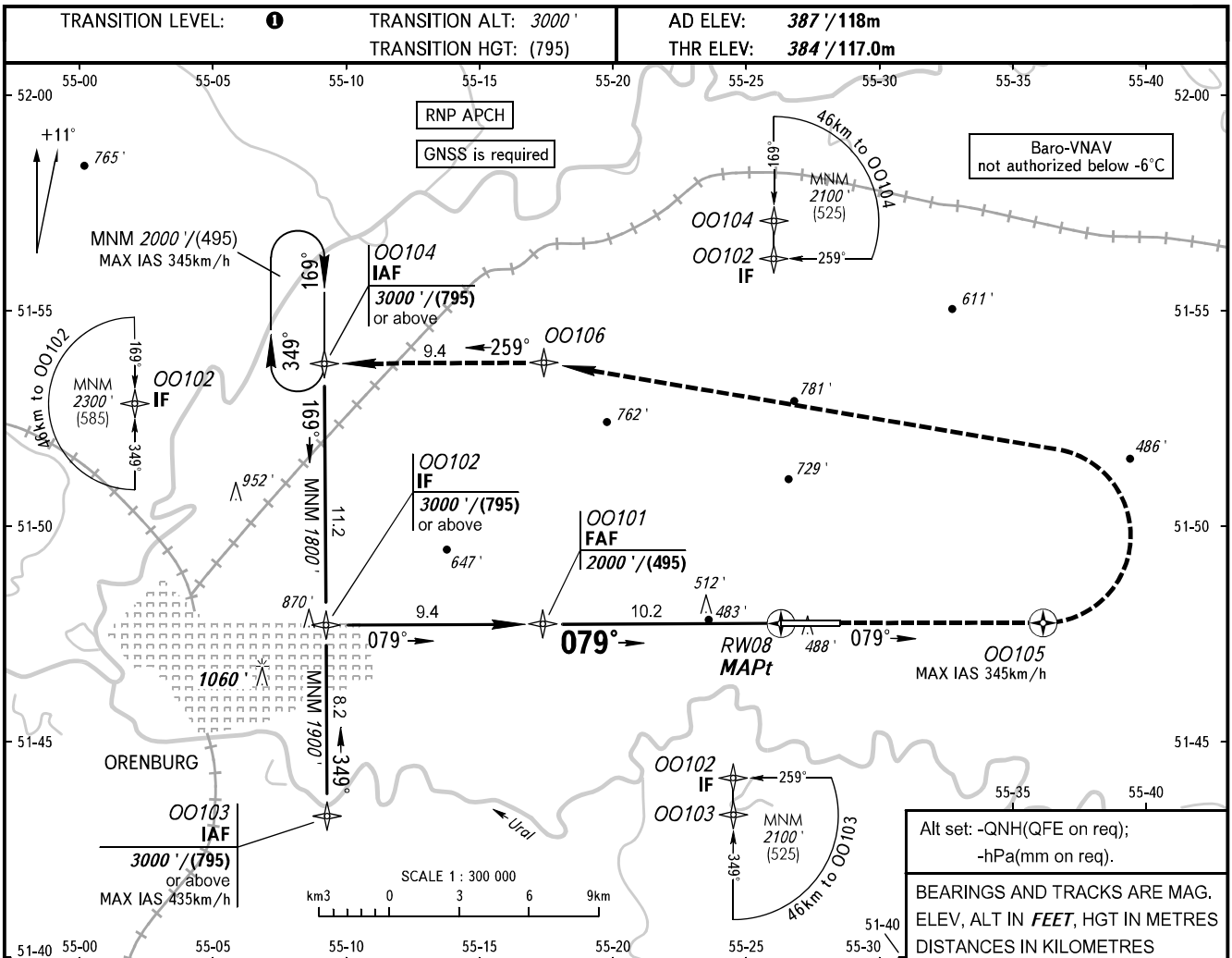


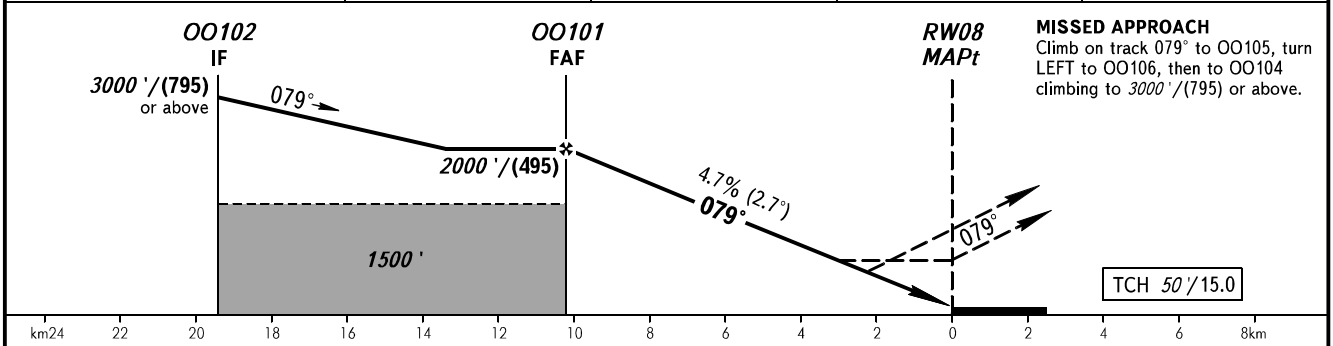
**INSTRUMENT  
APPROACH  
CHART - ICAO**

RADAR	120.400
TOWER	128.000

**ORENBURG, RUSSIA  
ORENBURG  
RNP RWY 08**



DIST to RW08	10.2	8.0	6.0	4.0
ALTITUDE/HEIGHT	2000'/(495)	1670'/(395)	1360'/(300)	1050'/(205)



OCA(H)		A	B	C	D
Straight-in	LNAV/VNAV	584' (199')	596' (211')	607' (223')	649' (265')
	LNAV	760' (380')	760' (380')	760' (380')	760' (380')
Circling		840' (460')	970' (590')	1130' (740')	1180' (790')

**TRANSITION LEVEL:**  
 - FL040 when QNH is 1013 hPa (760mm mercury column) or above;  
 - FL050 when QNH is 977 hPa (733mm mercury column) or above, but less than 1013 hPa (760mm mercury column);  
 - FL060 when QNH is less than 977 hPa (733mm mercury column).  
**NOTE**  
 Timing not authorized for defining MAPt.

GROUND SPEED	km/h	150	180	210	240	270	300	330	360	390
		RATE OF DESCENT	m/s	2.0	2.4	2.7	3.1	3.5	3.9	4.3
	ft/min	385	463	540	617	694	771	848	925	1002

CHANGE: TCH