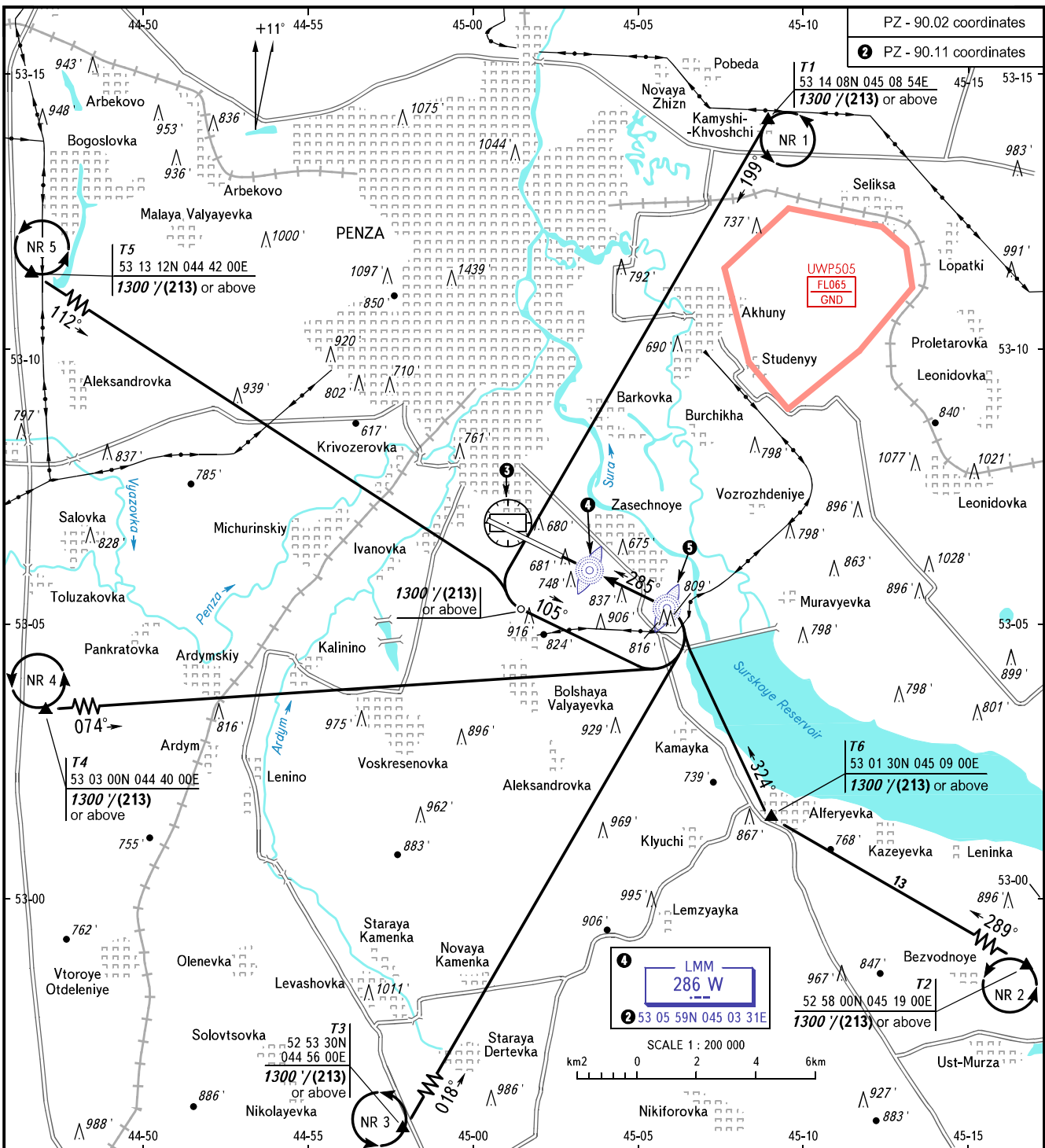


VFR
ARRIVAL
CHART

PENZA, RUSSIA
PENZA
RWY 29

TRANSITION
LEVEL: ①



VYSHKA 120.700

① TRANSITION LEVEL:

- FL040 when QNH is 1013 hPa (760mm mercury column) or above;
- FL050 when QNH is 977 hPa (733mm mercury column) or above, but less than 1013 hPa (760mm mercury column);
- FL060 when QNH is less than 977 hPa (733mm mercury column).

⑤ LOM
591 WH
② 53 05 17N 045 05 51E

③ PENZA
113.8 PNZ
② 53 06 50N 045 01 04E

BEARINGS AND TRACKS ARE MAGNETIC
ALTITUDES AND ELEVATIONS IN FEET
HEIGHTS IN METRES
DISTANCES IN KILOMETRES

Alt set: - QNH (QFE on req);
- hPa (mm on req).