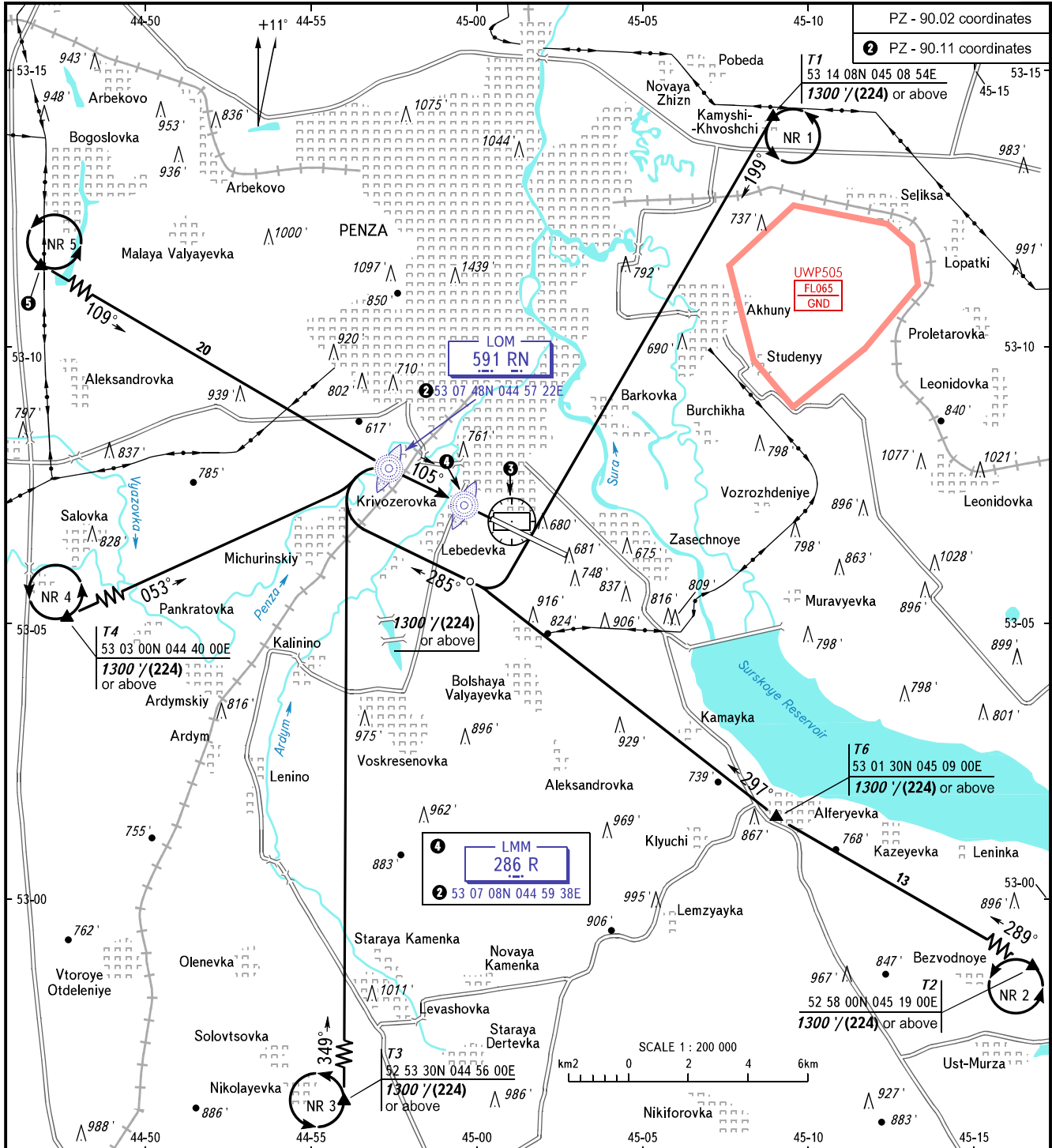


VFR
ARRIVAL
CHART

PENZA, RUSSIA
PENZA
RWY 11

TRANSITION
LEVEL: ①



PZ - 90.02 coordinates
② PZ - 90.11 coordinates

④ LMM
286 R
② 53 07 08N 044 59 38E

T6
53 01 30N 045 09 00E
1300'/(224) or above

T3
52 53 30N 044 56 00E
1300'/(224) or above

T2
52 58 00N 045 19 00E
1300'/(224) or above

- ① TRANSITION LEVEL:
- FL040 when QNH is 1013 hPa (760mm mercury column) or above;
 - FL050 when QNH is 977 hPa (733mm mercury column) or above, but less than 1013 hPa (760mm mercury column);
 - FL060 when QNH is less than 977 hPa (733mm mercury column).

⑤ PENZA
113.8 PNZ
② 53 06 50N 045 01 04E

⑤ T5
53 13 12N 044 42 00E
1300'/(224) or above

BEARINGS AND TRACKS ARE MAGNETIC
ALTITUDES AND ELEVATIONS IN FEET
HEIGHTS IN METRES
DISTANCES IN KILOMETRES

Alt set: - QNH (QFE on req);
- hPa (mm on req).

CHANGE: Heading