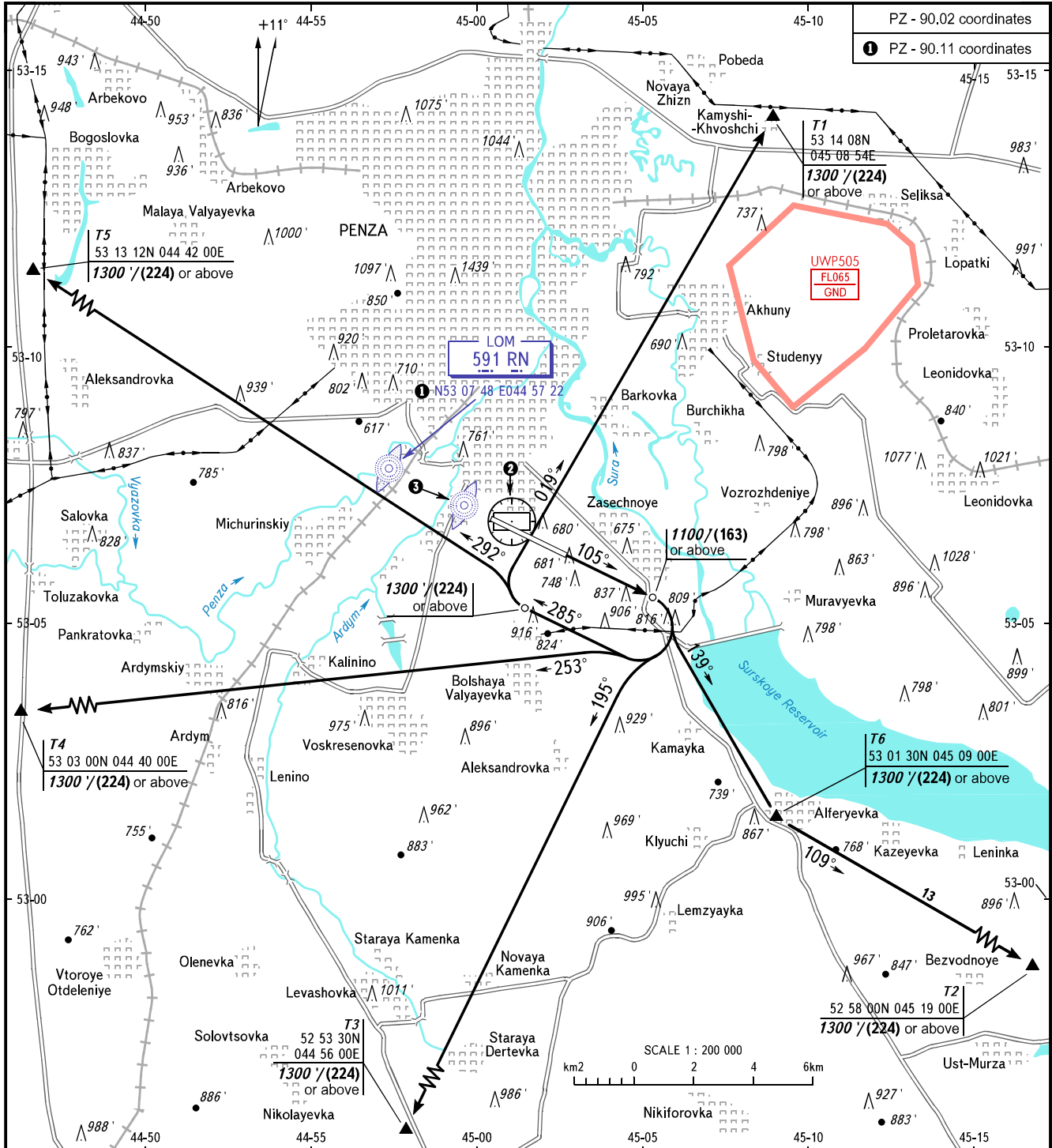


VFR
DEPARTURE
CHART

PENZA, RUSSIA
PENZA
RWY 11

TRANSITION ALT: **3000'**
TRANSITION HGT: **(750)**



PZ - 90.02 coordinates
① PZ - 90.11 coordinates

CHANGE: Heading

BEARINGS AND TRACKS ARE MAGNETIC
ALTITUDES AND ELEVATIONS IN FEET
HEIGHTS IN METRES
DISTANCES IN KILOMETRES

Alt set: - QNH (QFE on req);
- hPa (mm on req).

② **PENZA**
113.8 PNZ
① 53 06 50N 045 01 04E

③ **LMM**
286 R
① 53 07 08N 044 59 38E