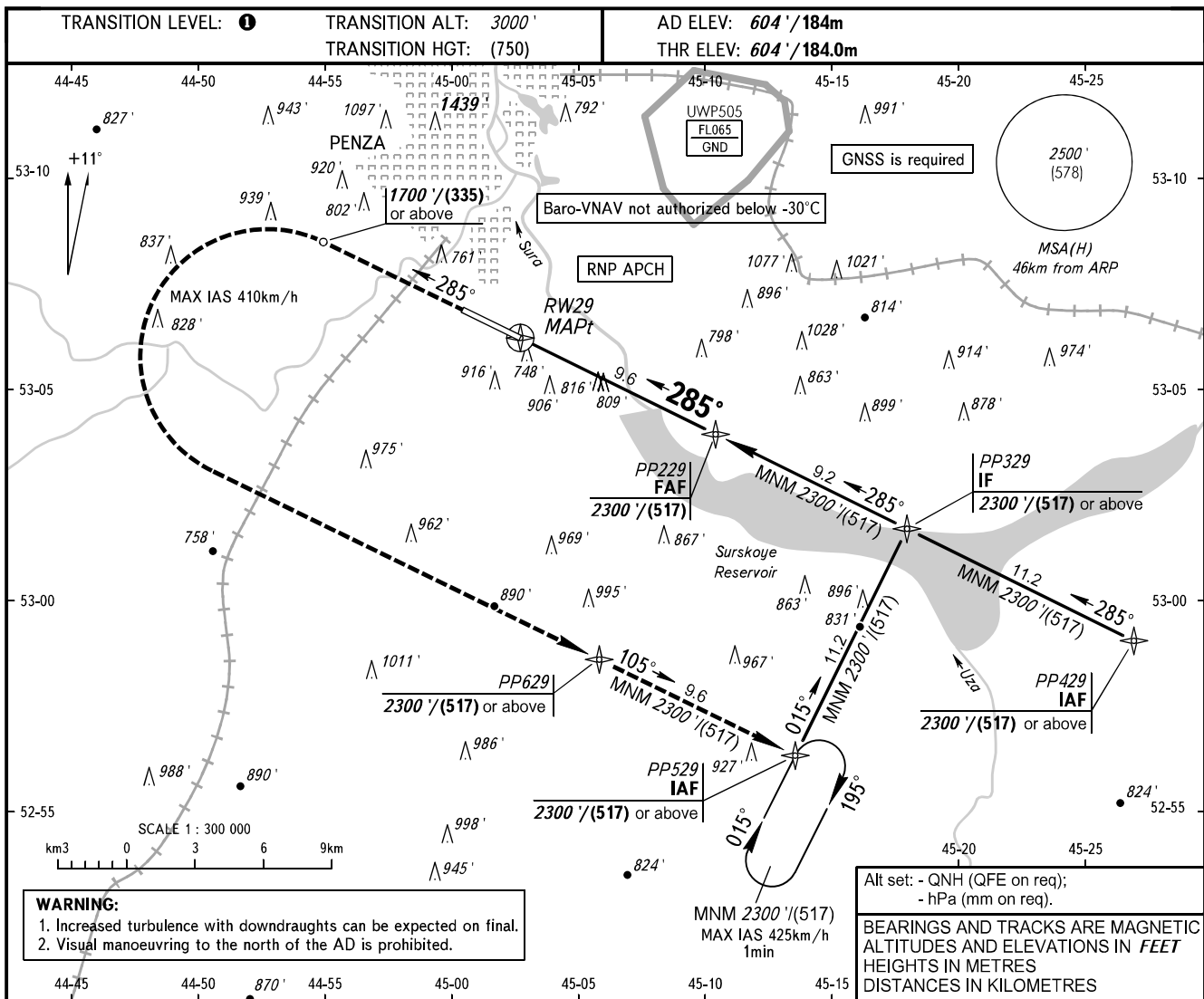


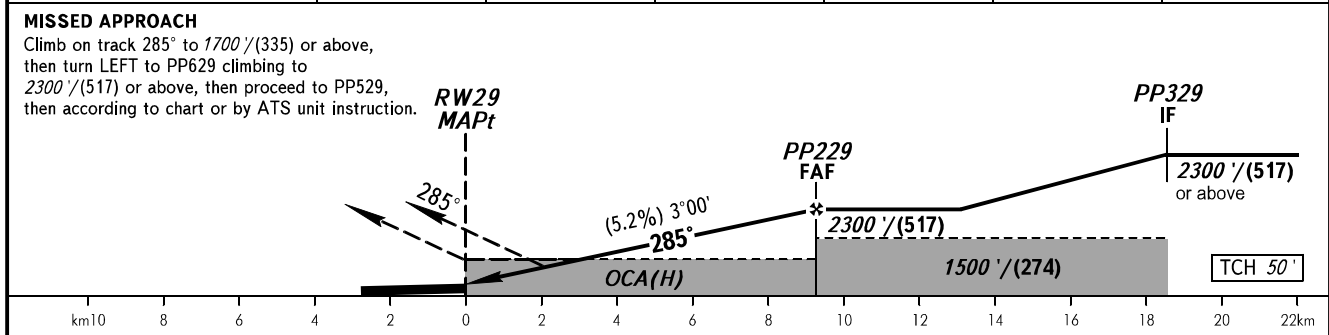
**INSTRUMENT
APPROACH
CHART - ICAO**

VYSHKA **120.700**

PENZA, RUSSIA
PENZA
RNAV RWY 29



DIST to RW29	2.0	3.0	5.0	7.0	9.0	9.6
ALTITUDE/HEIGHT	995' / (120)	1165' / (171)	1510' / (277)	1850' / (380)	2190' / (484)	2300' / (517)



OCA(H)		A	B	C	D	TRANSITION LEVEL:					
Straight-in	LNAV	1110' (510') (155)	1110' (510') (155)	1110' (510') (155)	1110' (510') (155)	- FL040 when QNH is 1013 hPa (760mm mercury column) or above; - FL050 when QNH is 977 hPa (733mm mercury column) or above, but less than 1013 hPa (760mm mercury column); - FL060 when QNH is less than 977 hPa (733mm mercury column).					
	Approach	LNAV/VNAV	992' (388') (119)	1001' (398') (122)	1011' (408') (125)						1021' (417') (128)
Circling		1220' (610') (188)	1240' (630') (194)	1340' (730') (225)	1380' (770') (237)						
GROUND SPEED		km/h	150	180	210	240	270	300	330	360	390
RATE OF DESCENT		m/s	2.2	2.6	3.0	3.5	3.9	4.3	4.8	5.2	5.6
		ft/min	427	512	597	682	768	853	938	1024	1109