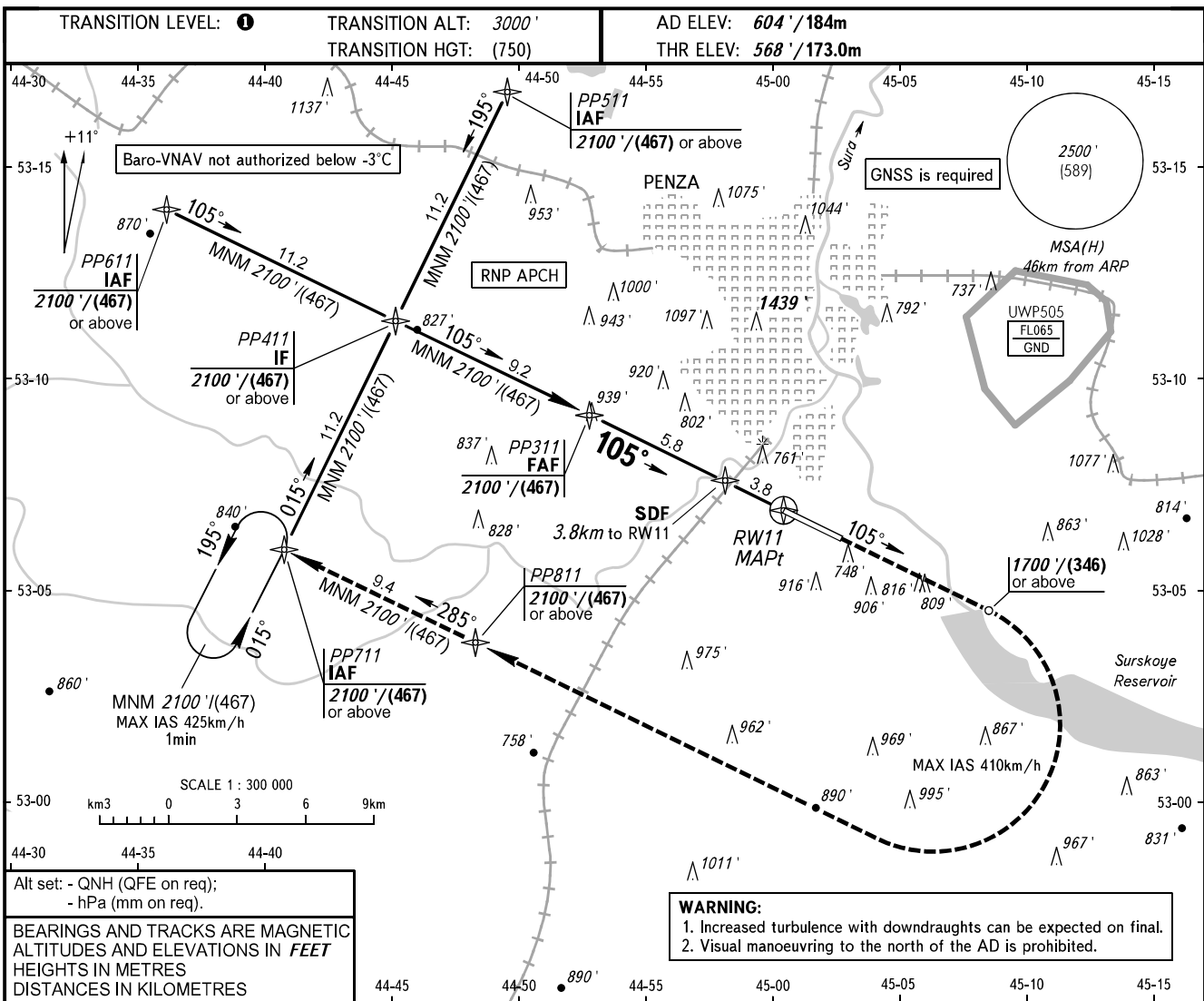


**INSTRUMENT
APPROACH
CHART - ICAO**

VYSHKA **120.700**

PENZA, RUSSIA
PENZA
RNAV RWY 11

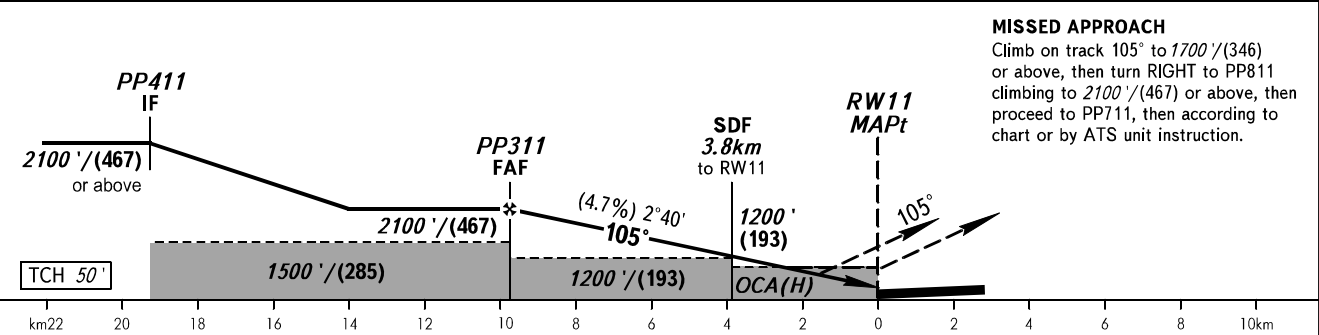


Alt set: - QNH (QFE on req);
- hPa (mm on req).

BEARINGS AND TRACKS ARE MAGNETIC
ALTITUDES AND ELEVATIONS IN **FEET**
HEIGHTS IN METRES
DISTANCES IN KILOMETRES

WARNING:
1. Increased turbulence with downdraughts can be expected on final.
2. Visual manoeuvring to the north of the AD is prohibited.

DIST to RW11	9.6	9.0	7.0	5.0	3.0	2.0
ALTITUDE/HEIGHT	2100' / (467)	2005' / (438)	1700' / (346)	1390' / (251)	1080' / (157)	925' / (109)



MISSED APPROACH
Climb on track 105° to 1700'/(346) or above, then turn RIGHT to PP811 climbing to 2100'/(467) or above, then proceed to PP711, then according to chart or by ATS unit instruction.

OCA(H)		A	B	C	D
Straight-in	LNAV	900' (340') (102)	910' (350') (105)	910' (350') (105)	910' (350') (105)
	LNAV/VNAV	810' (242') (74)	814' (246') (75)	818' (250') (77)	825' (257') (79)
Circling		1220' (610') (188)	1240' (630') (194)	1340' (730') (225)	1380' (770') (237)

TRANSITION LEVEL:
- FL040 when QNH is 1013 hPa (760mm mercury column) or above;
- FL050 when QNH is 977 hPa (733mm mercury column) or above, but less than 1013 hPa (760mm mercury column);
- FL060 when QNH is less than 977 hPa (733mm mercury column).

GROUND SPEED	km/h	150	180	210	240	270	300	330	360	390
RATE OF DESCENT	m/s	2.0	2.4	2.8	3.1	3.5	3.9	4.3	4.7	5.1
	ft/min	385	463	540	617	694	771	848	925	1002

CHANGE: Heading