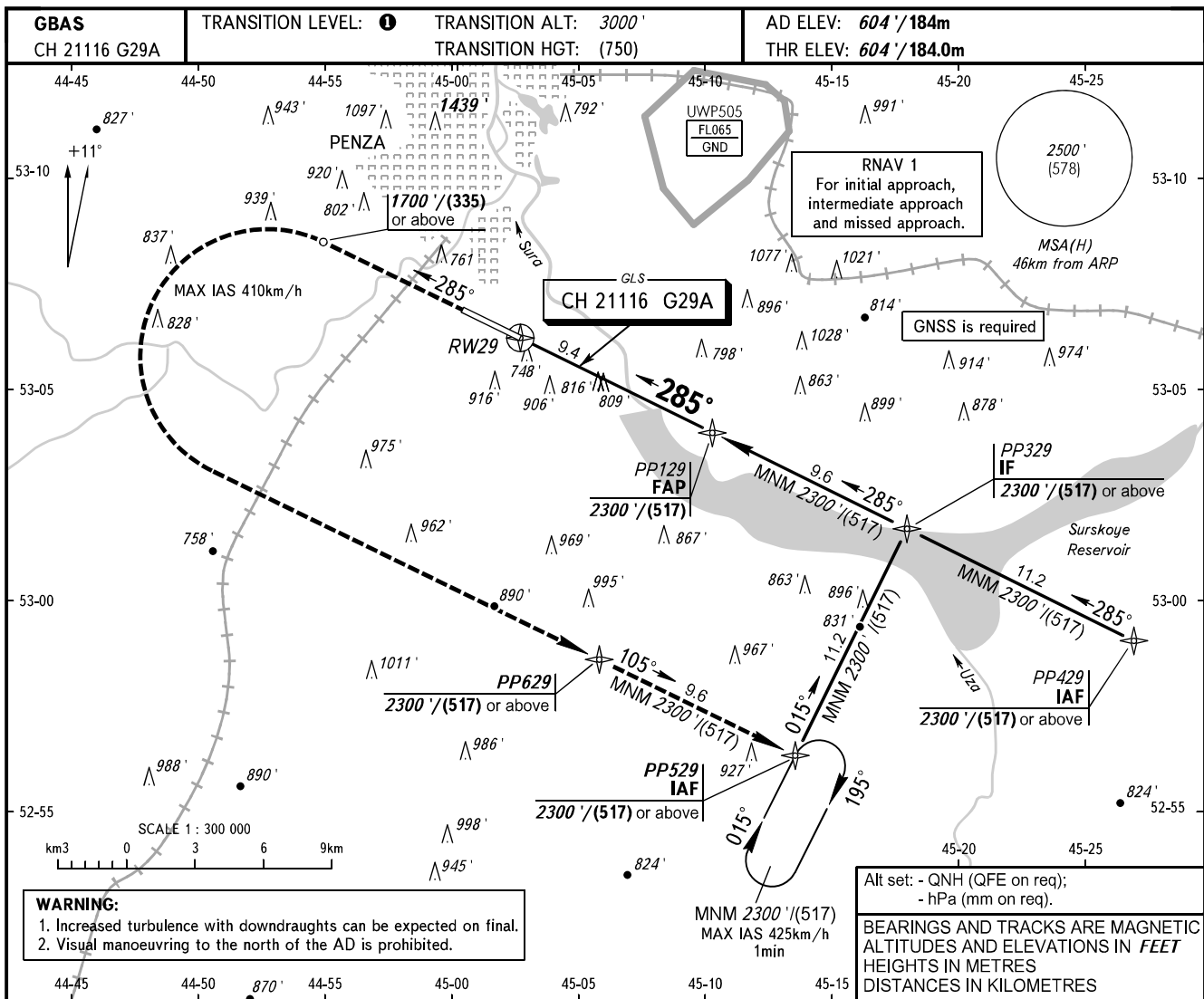


**INSTRUMENT
APPROACH
CHART - ICAO**

VYSHKA **120.700**

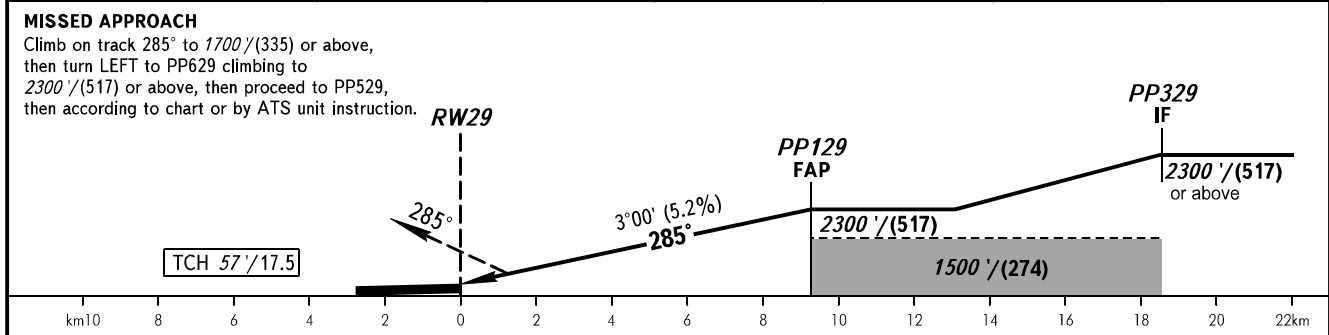
PENZA, RUSSIA
PENZA
GLS RWY 29



WARNING:
1. Increased turbulence with downdraughts can be expected on final.
2. Visual manoeuvring to the north of the AD is prohibited.

Alt set: - QNH (QFE on req);
- hPa (mm on req).
BEARINGS AND TRACKS ARE MAGNETIC
ALTITUDES AND ELEVATIONS IN FEET
HEIGHTS IN METRES
DISTANCES IN KILOMETRES

DIST to RW29	1.0	3.0	5.0	7.0	9.0	9.4
ALTITUDE/HEIGHT	835' / (71)	1180' / (176)	1530' / (283)	1880' / (389)	2230' / (496)	2300' / (517)



OCA(H)		A	B	C	D
Straight-in Approach		747' (143') (44)	755' (151') (47)	764' (160') (49)	779' (175') (54)
	Circling	1220' (610') (188)	1240' (630') (194)	1340' (730') (225)	1380' (770') (237)

TRANSITION LEVEL:
- FL040 when QNH is 1013 hPa (760mm mercury column) or above;
- FL050 when QNH is 977 hPa (733mm mercury column) or above, but less than 1013 hPa (760mm mercury column);
- FL060 when QNH is less than 977 hPa (733mm mercury column).

GROUND SPEED	km/h	150	180	210	240	270	300	330	360	390
RATE OF DESCENT	m/s	2.2	2.6	3.0	3.5	3.9	4.3	4.8	5.2	5.6
	ft/min	427	512	597	682	768	853	938	1024	1109