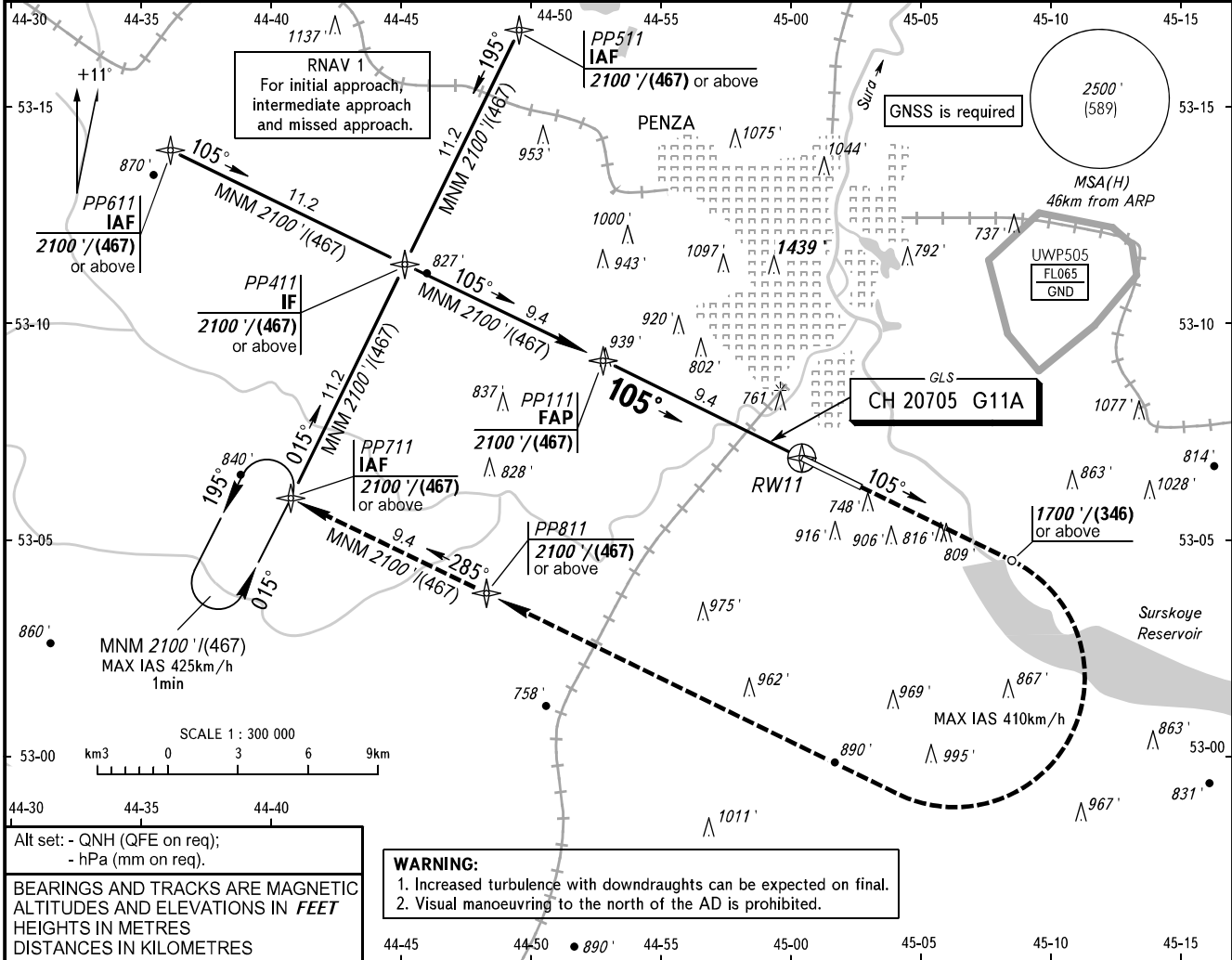


**INSTRUMENT  
APPROACH  
CHART - ICAO**

VYSHKA **120.700**

**PENZA, RUSSIA**  
PENZA  
GLS RWY 11

<b>GBAS</b> CH 20705 G11A	TRANSITION LEVEL: <b>1</b>	TRANSITION ALT: <b>3000'</b> TRANSITION HGT: <b>(750)</b>	AD ELEV: <b>604' / 184m</b> THR ELEV: <b>568' / 173.0m</b>
------------------------------	----------------------------	--	---

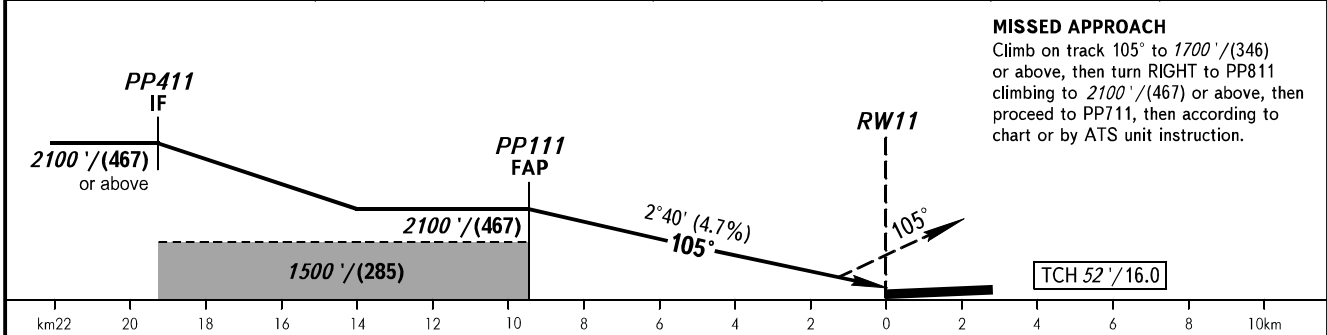


Alt set: - QNH (QFE on req);  
- hPa (mm on req).

BEARINGS AND TRACKS ARE MAGNETIC  
ALTITUDES AND ELEVATIONS IN **FEET**  
HEIGHTS IN METRES  
DISTANCES IN KILOMETRES

**WARNING:**  
1. Increased turbulence with downdraughts can be expected on final.  
2. Visual manoeuvring to the north of the AD is prohibited.

DIST to RW11	9.4	9.0	7.0	5.0	3.0	1.0
ALTITUDE/HEIGHT	2100' / (467)	2020' / (443)	1705' / (347)	1395' / (253)	1085' / (158)	775' / (64)



GROUND SPEED	km/h	150	180	210	240	270	300	330	360	390
	m/s	2.0	2.4	2.8	3.1	3.5	3.9	4.3	4.7	5.1
RATE OF DESCENT	ft/min	385	463	540	617	694	771	848	925	1002