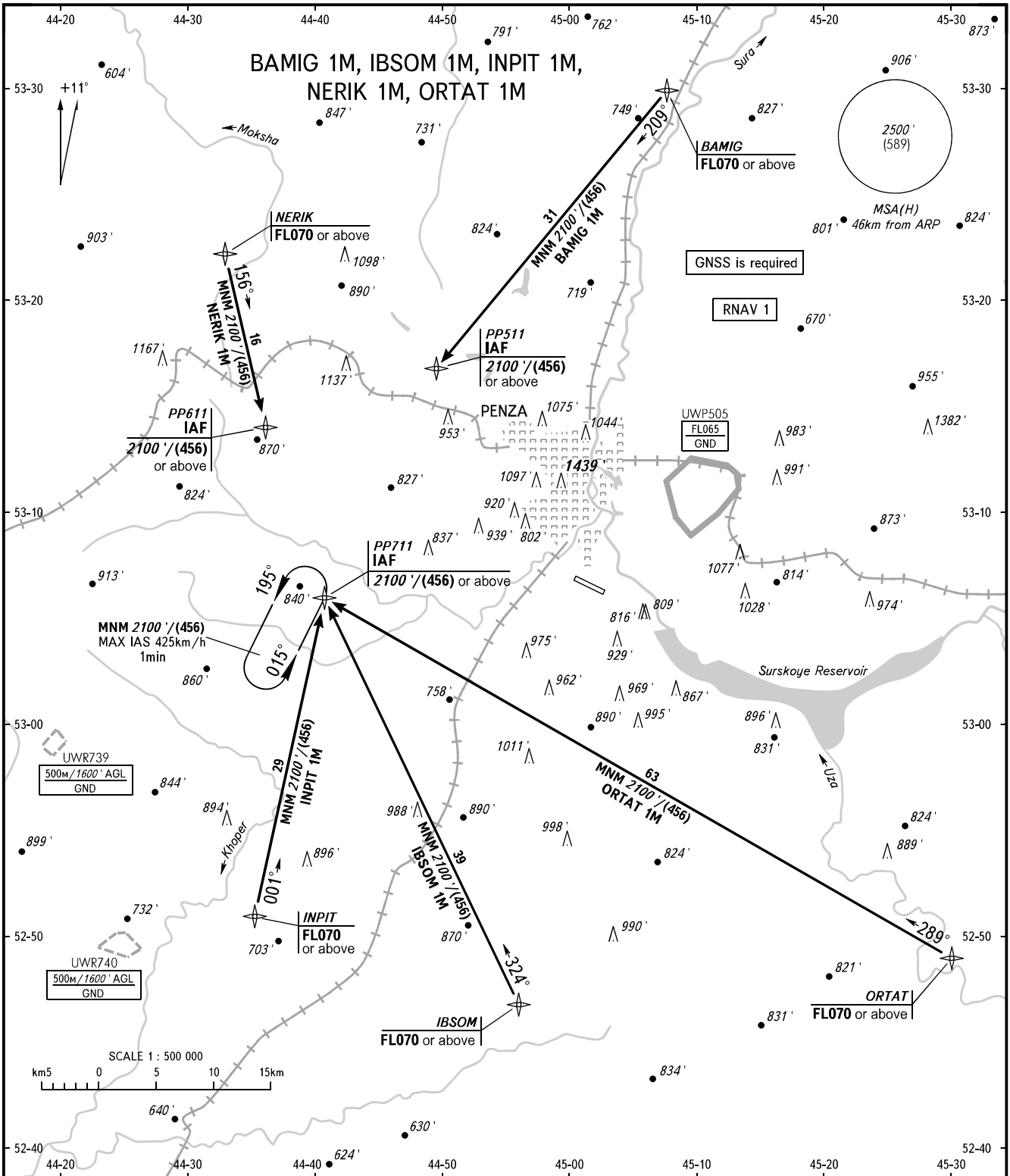


STANDARD ARRIVAL CHART
INSTRUMENT (STAR) - ICAO

PENZA, RUSSIA
PENZA
RNAV RWY 11

TRANSITION
LEVEL: **1**



VYSHKA **120.700**

- 1** TRANSITION LEVEL:
- FL040 when QNH is 1013 hPa (760mm mercury column) or above;
 - FL050 when QNH is 977 hPa (733mm mercury column) or above, but less than 1013 hPa (760mm mercury column);
 - FL060 when QNH is less than 977 hPa (733mm mercury column).

BEARINGS AND TRACKS ARE MAGNETIC
ALTITUDES AND ELEVATIONS IN FEET
HEIGHTS IN METRES
DISTANCES IN KILOMETRES

Alt set: - QNH (QFE on req);
- hPa (mm on req).

CHANGE: Heading, ORTAT