

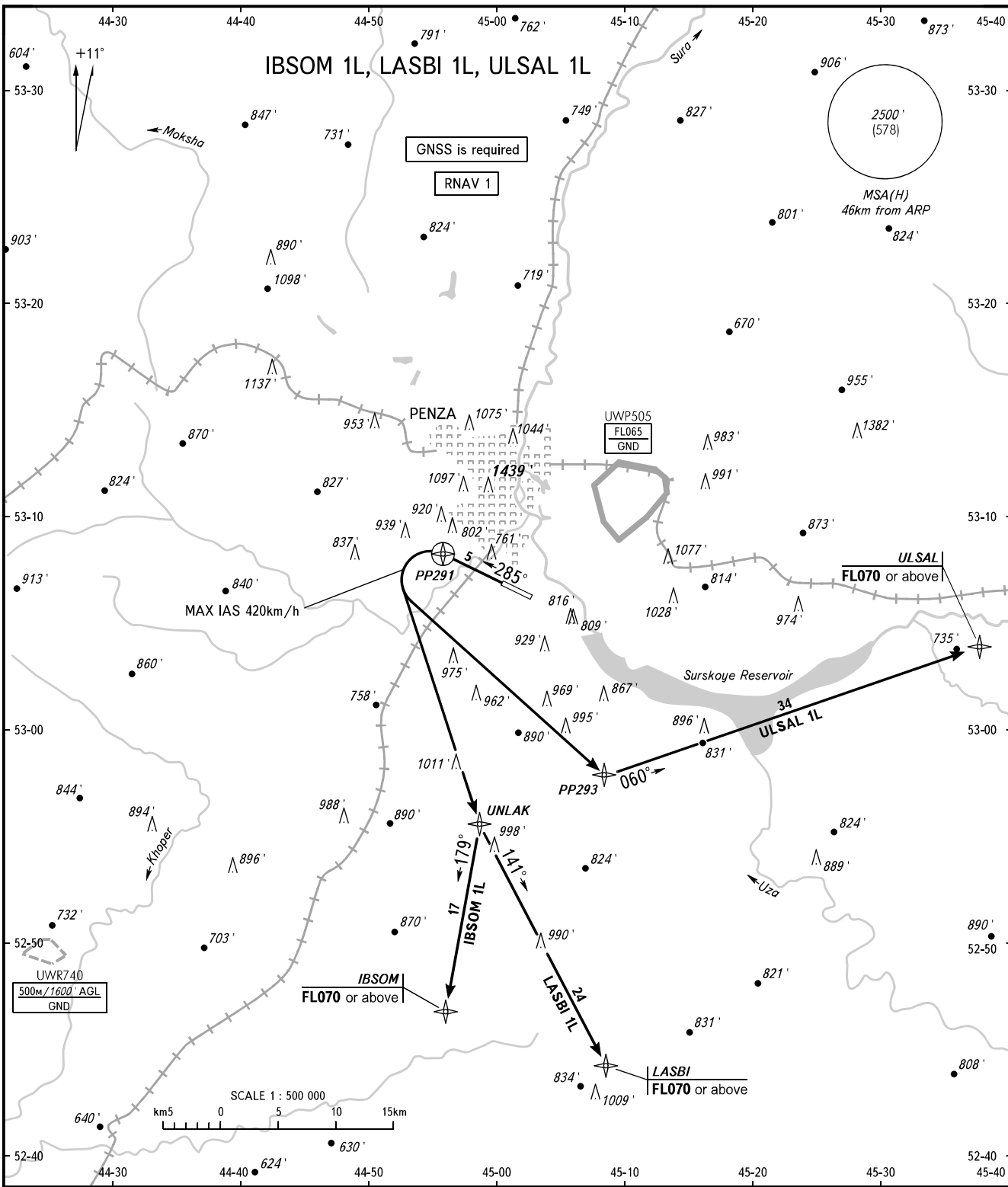
STANDARD DEPARTURE CHART
INSTRUMENT (SID) - ICAO

TRANSITION ALT: 3000'
TRANSITION HGT: (750)

PENZA, RUSSIA

PENZA

RNAV RWY 29



VYSHKA 120.700

WARNING

The minimum climb gradients are as follows:
- 3.9% up to FL070 for ULSAL 1L;
- 4.2% up to FL070 for LASBI 1L;
- 5.3% up to FL070 for IBSOM 1L.

BEARINGS AND TRACKS ARE MAGNETIC
ALTITUDES AND ELEVATIONS IN FEET
HEIGHTS IN METRES
DISTANCES IN KILOMETRES

Alt set: - QNH (QFE on req);
- hPa (mm on req).

CHANGE: Heading