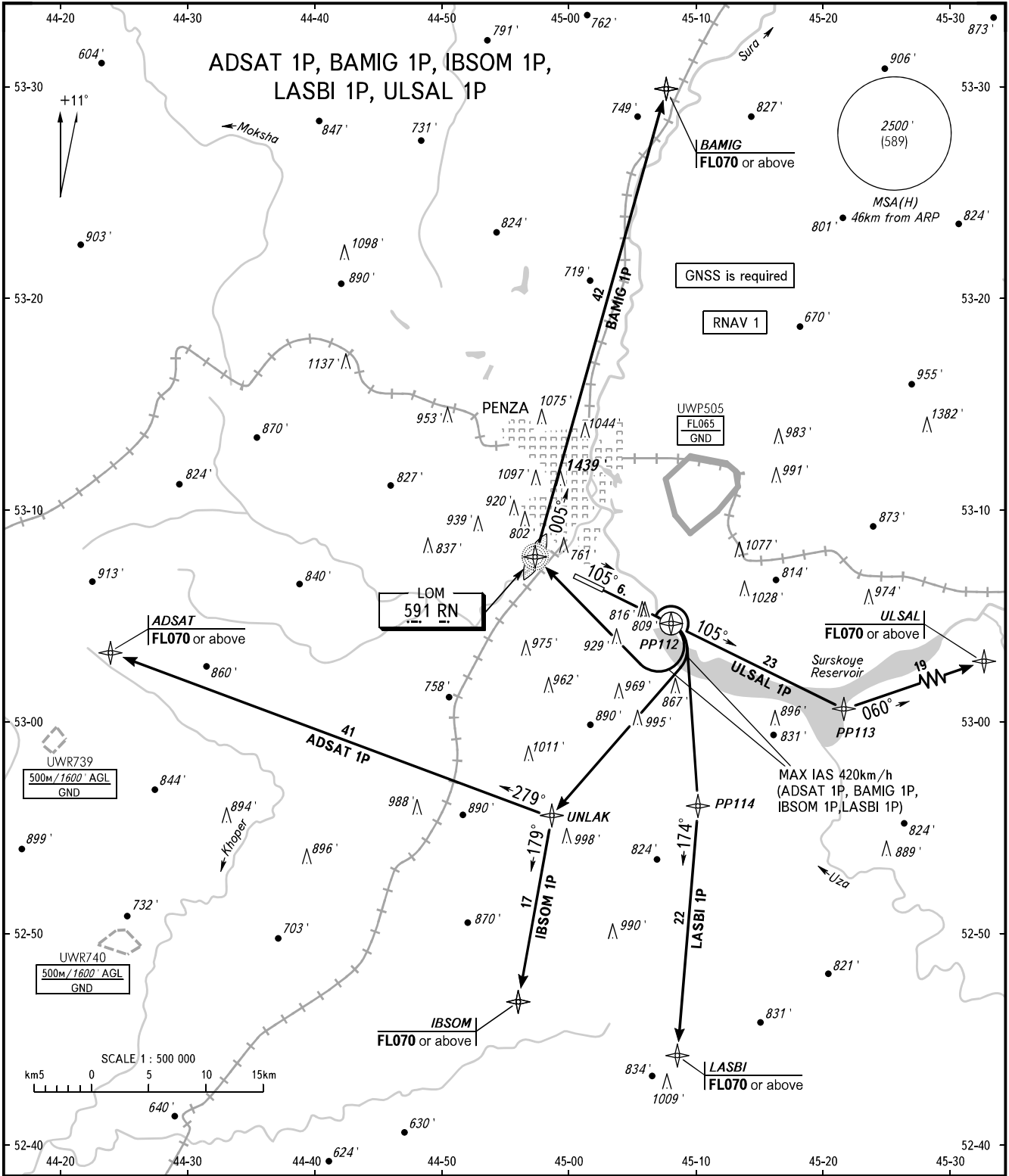


STANDARD DEPARTURE CHART
INSTRUMENT (SID) - ICAO

TRANSITION ALT: 3000'
TRANSITION HGT: (750)

PENZA, RUSSIA
PENZA
RNAV RWY 11



VYSHKA 120.700

- WARNING:**
- MNM climb gradient 4.1% up to 900'/(102).
 - The minimum climb gradients are as follows:
 - 3.9% up to FL070 for BAMIG 1P;
 - 5.1% up to FL070 for ULSAL 1P;
 - 4.9% up to FL070 for LASBI 1P;
 - 5.5% up to FL070 for IBSOM 1P;
 - 3.6% up to FL070 for ADSAT 1P.

BEARINGS AND TRACKS ARE MAGNETIC
ALTITUDES AND ELEVATIONS IN FEET
HEIGHTS IN METRES
DISTANCES IN KILOMETRES

Alt set: - QNH (QFE on req);
- hPa (mm on req).

CHANGE: Heading, WARNING, ADSAT