

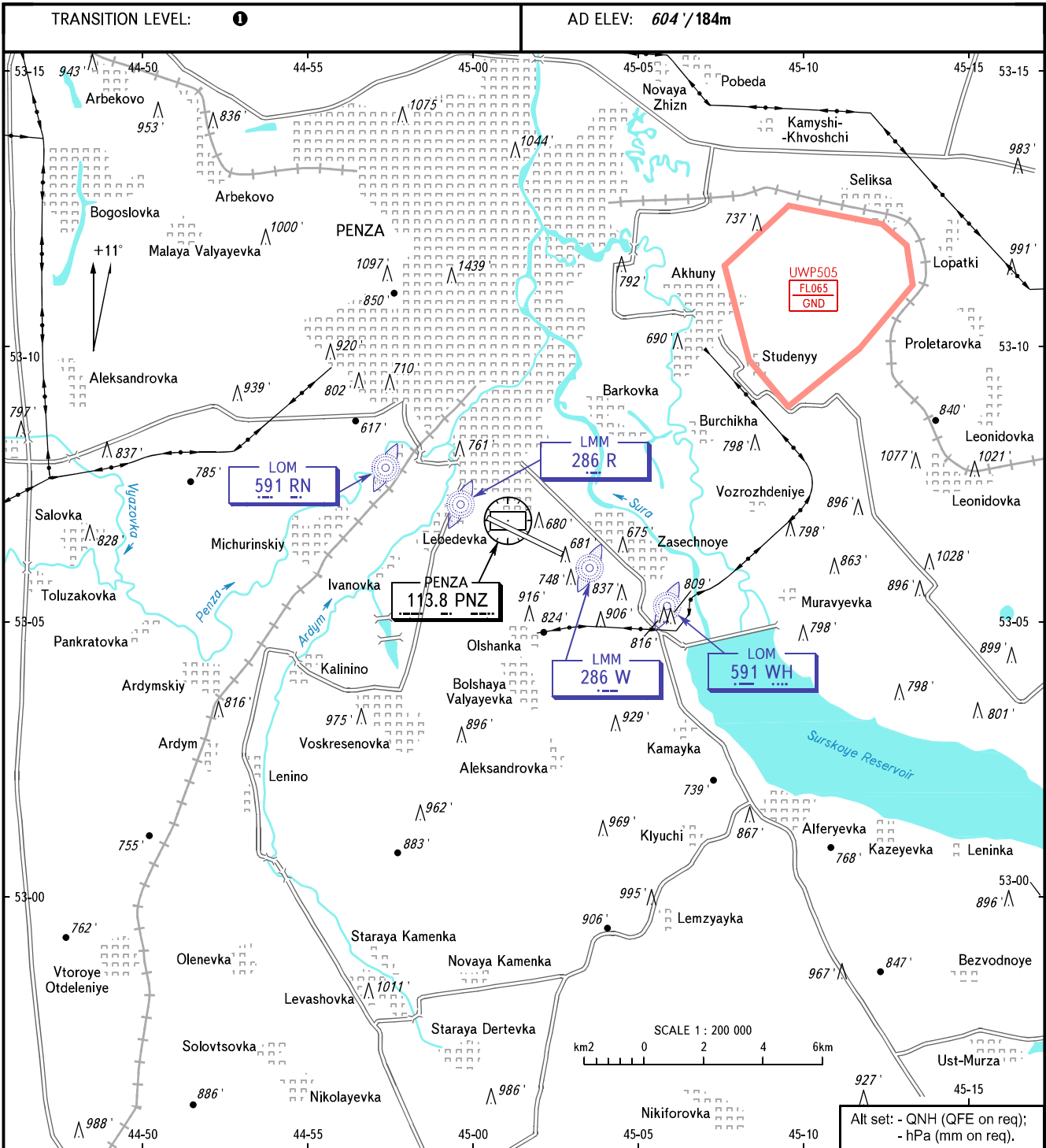
VISUAL
APPROACH
CHART - ICAO

PENZA, RUSSIA
PENZA
RWY 11/29

VYSHKA 120.700

TRANSITION LEVEL: ①

AD ELEV: 604' / 184m



- ① TRANSITION LEVEL:
- FL040 when QNH is 1013 hPa (760mm mercury column) or above;
 - FL050 when QNH is 977 hPa (733mm mercury column) or above, but less than 1013 hPa (760mm mercury column);
 - FL060 when QNH is less than 977 hPa (733mm mercury column).

WARNING

Clearance for ACFT flight under IFR to execute visual approach shall be requested by the flight crew or is initiated by the ATS unit. In the latter case, coordination with the flight crew is required.

CHANGE: Heading