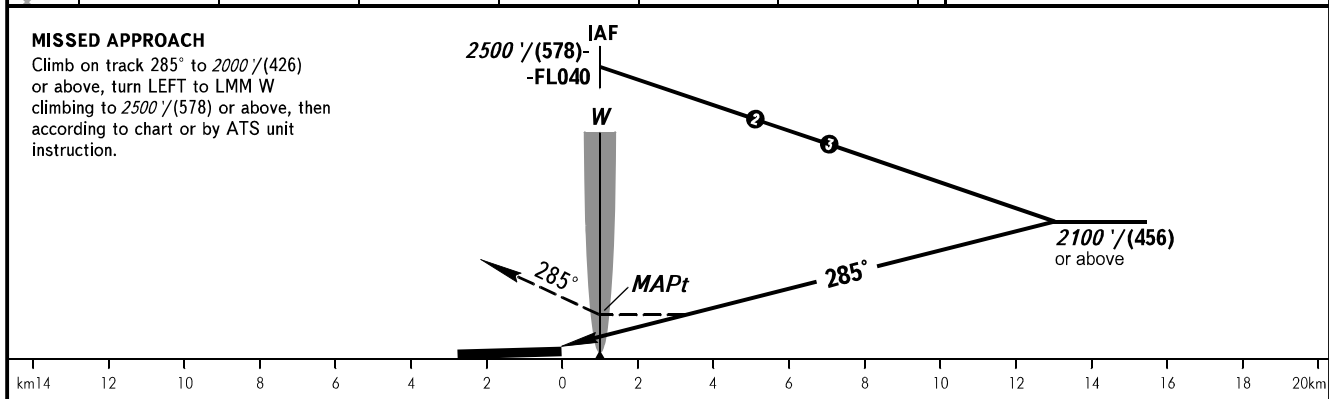
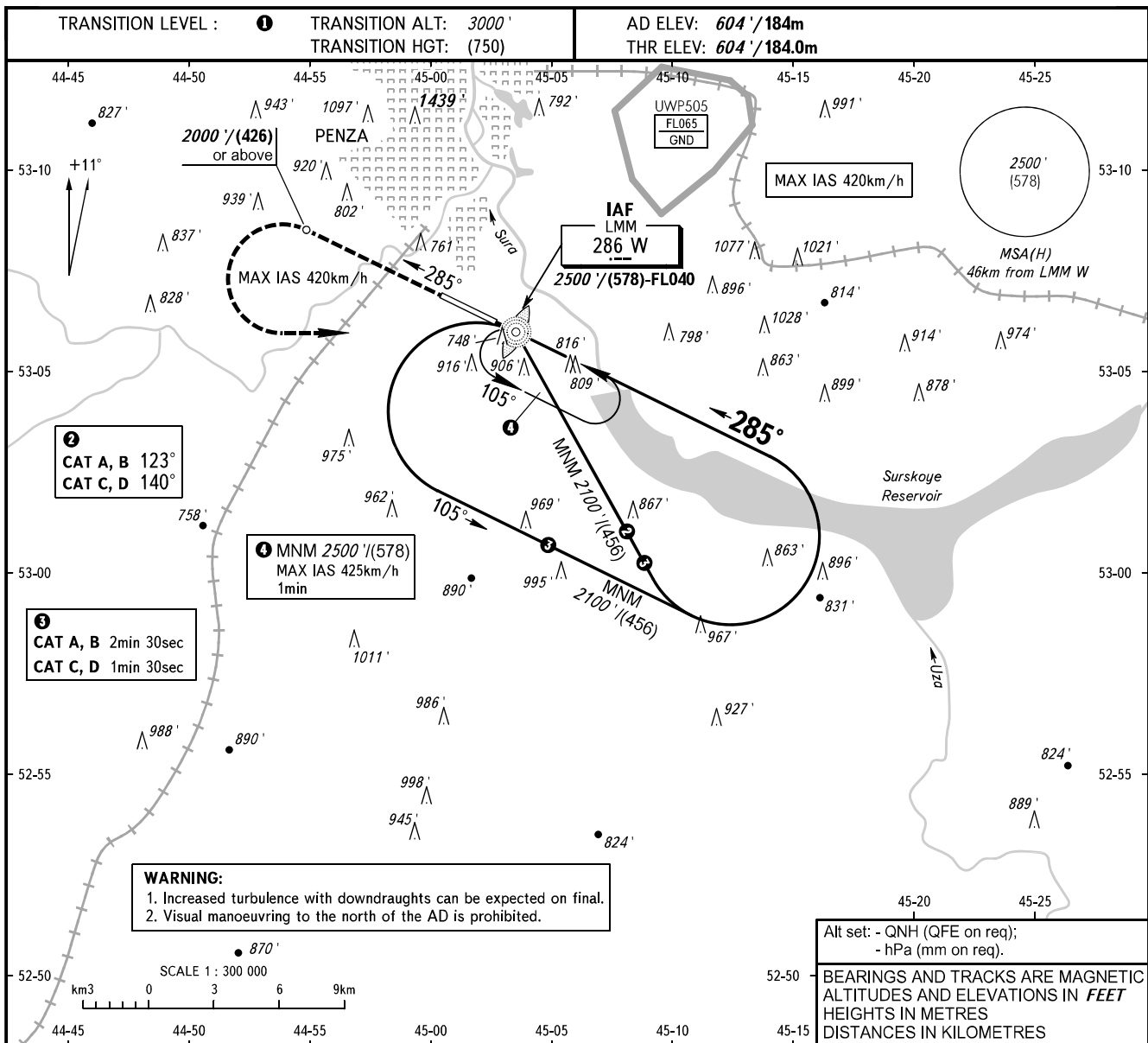


**INSTRUMENT
APPROACH
CHART - ICAO**

VYSHKA **120.700**

PENZA, RUSSIA
PENZA
NDB X RWY 29



OCA(H)		A	B	C	D
Straight-in Approach		1160' (560') (170)	1160' (560') (170)	1160' (560') (170)	1160' (560') (170)
Circling		1220' (610') (188)	1240' (630') (194)	1340' (730') (225)	1380' (770') (237)

① TRANSITION LEVEL:
- FL040 when QNH is 1013 hPa (760mm mercury column) or above;
- FL050 when QNH is 977 hPa (733mm mercury column) or above, but less than 1013 hPa (760mm mercury column);
- FL060 when QNH is less than 977 hPa (733mm mercury column).