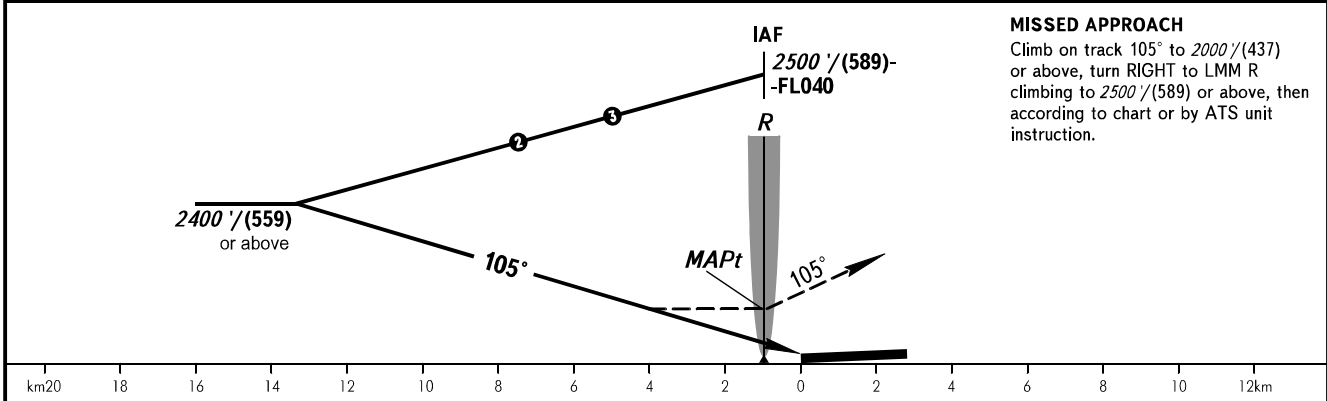
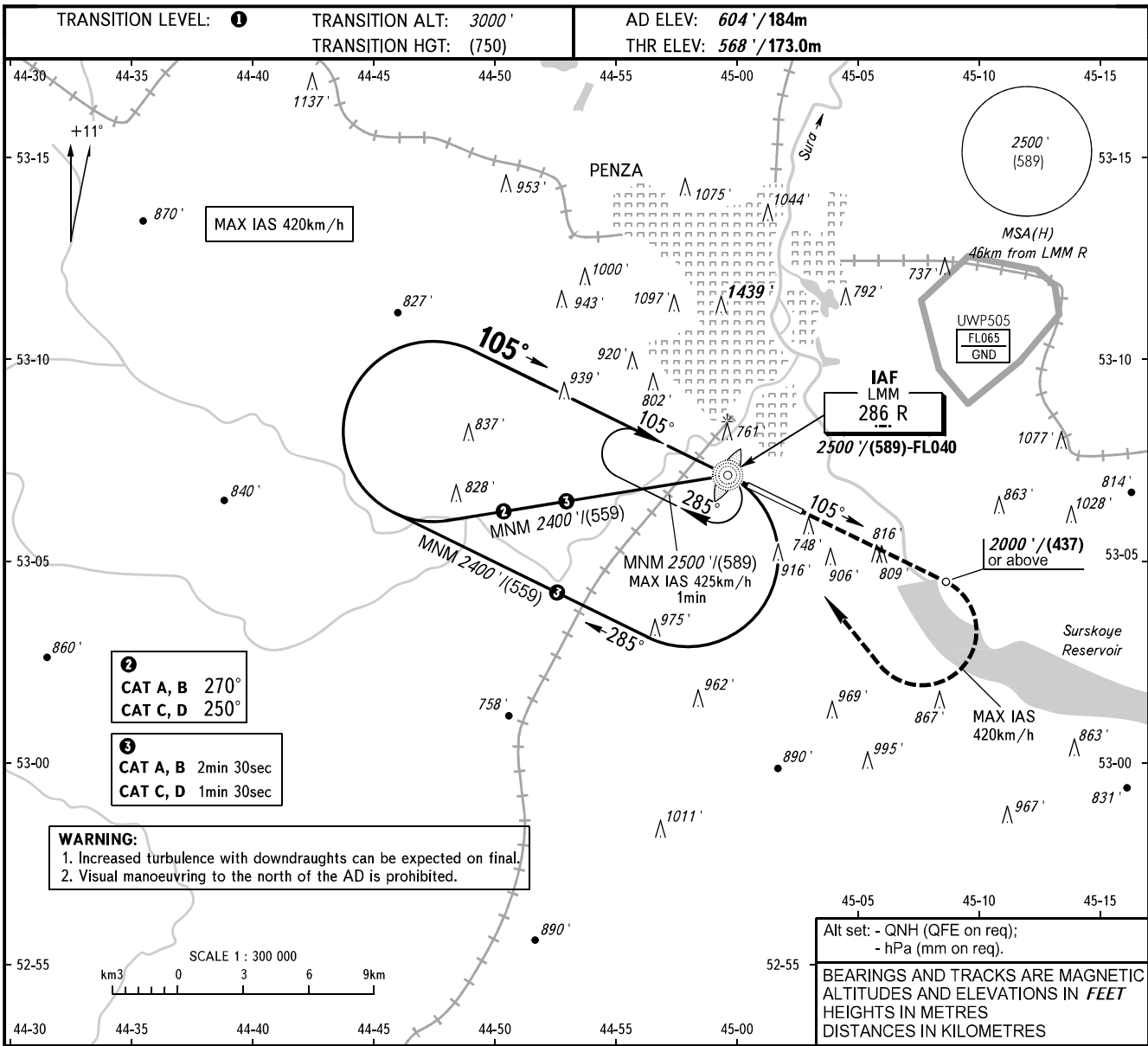


**INSTRUMENT
APPROACH
CHART - ICAO**

VYSHKA **120.700**

PENZA, RUSSIA
PENZA
NDB X RWY 11



OCA(H)		A	B	C	D
Straight-in Approach		1250' (680') (208)	1250' (680') (208)	1250' (680') (208)	1250' (680') (208)
Circling		1250' (680') (208)	1250' (680') (208)	1340' (730') (225)	1380' (770') (237)

1 TRANSITION LEVEL:
 - FL040 when QNH is 1013 hPa (760mm mercury column) or above;
 - FL050 when QNH is 977 hPa (733mm mercury column) or above, but less than 1013 hPa (760mm mercury column);
 - FL060 when QNH is less than 977 hPa (733mm mercury column).