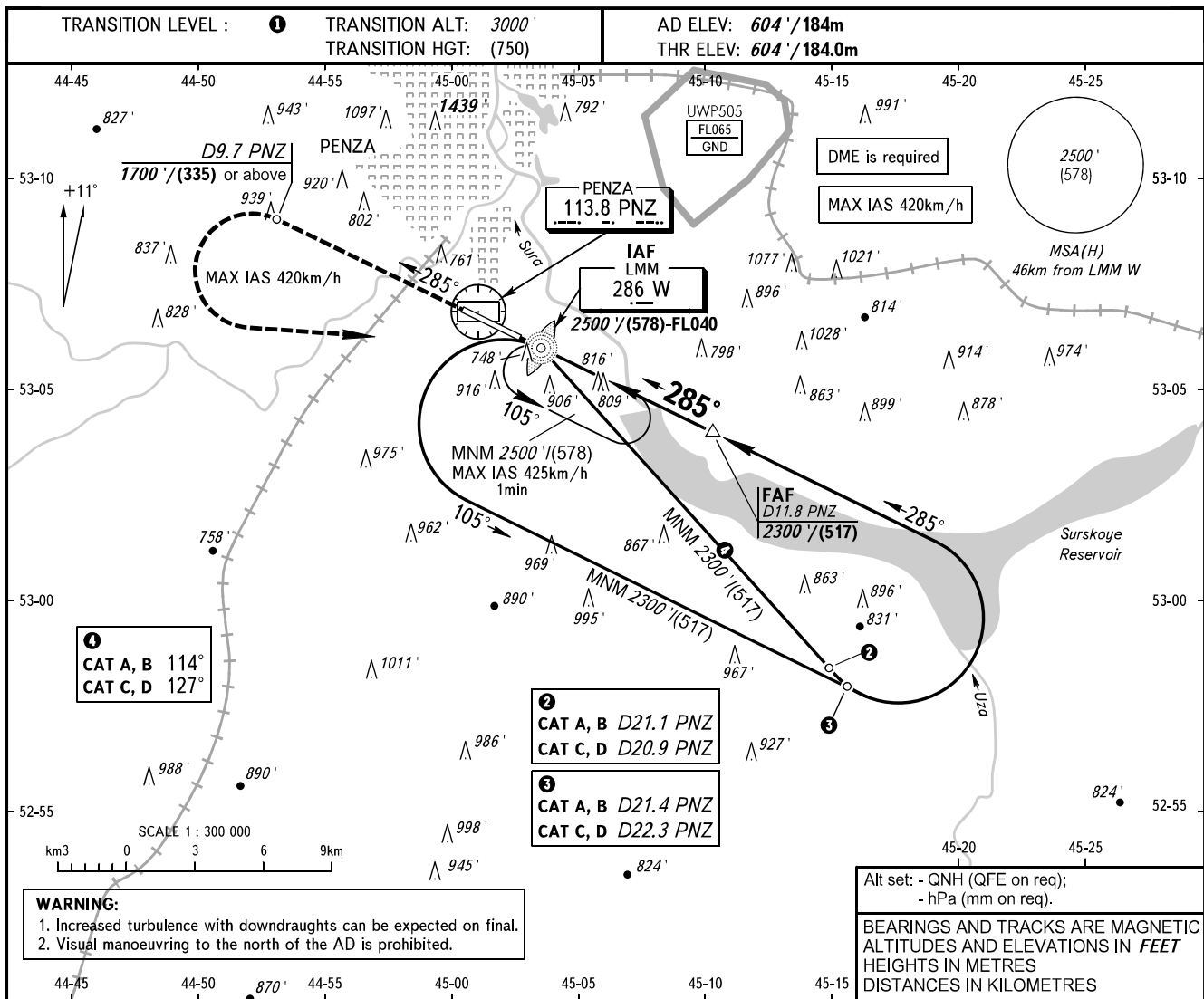


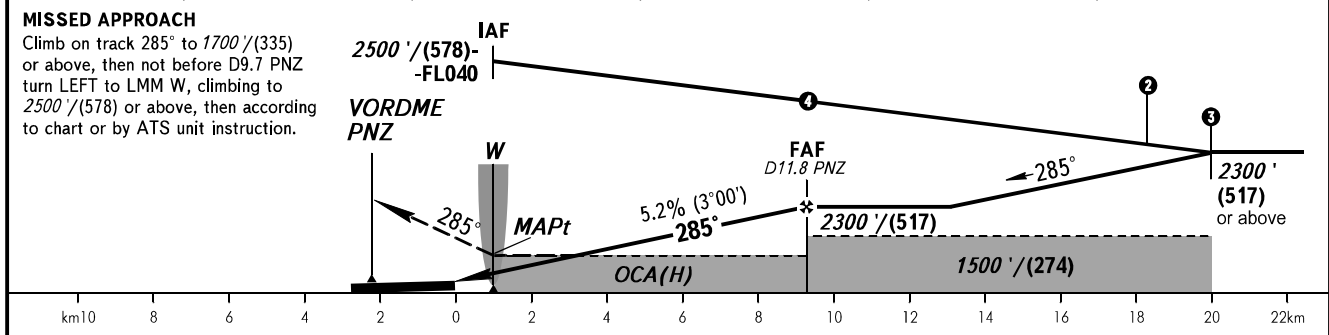
**INSTRUMENT  
APPROACH  
CHART - ICAO**

VYSHKA **120.700**

**PENZA, RUSSIA**  
PENZA  
NDB Z RWY 29



DME PNZ	5.0	7.0	9.0	11.0	11.8
ALTITUDE/HEIGHT	1140' / (164)	1485' / (269)	1825' / (373)	2165' / (476)	2300' / (517)



OCA(H)		A	B	C	D							
Straight-in Approach		1110' (510') (155)	1110' (510') (155)	1110' (510') (155)	1110' (510') (155)							
Circling		1220' (610') (188)	1240' (630') (194)	1340' (730') (225)	1380' (770') (237)							
GROUND SPEED			km/h	150	180	210	240	270	300	330	360	390
RATE OF DESCENT			m/s	2.2	2.6	3.0	3.5	3.9	4.3	4.8	5.2	5.6
			ft/min	427	512	597	682	768	853	938	1024	1109

**1** TRANSITION LEVEL:  
- FL040 when QNH is 1013 hPa (760mm mercury column) or above;  
- FL050 when QNH is 977 hPa (733mm mercury column) or above, but less than 1013 hPa (760mm mercury column);  
- FL060 when QNH is less than 977 hPa (733mm mercury column).