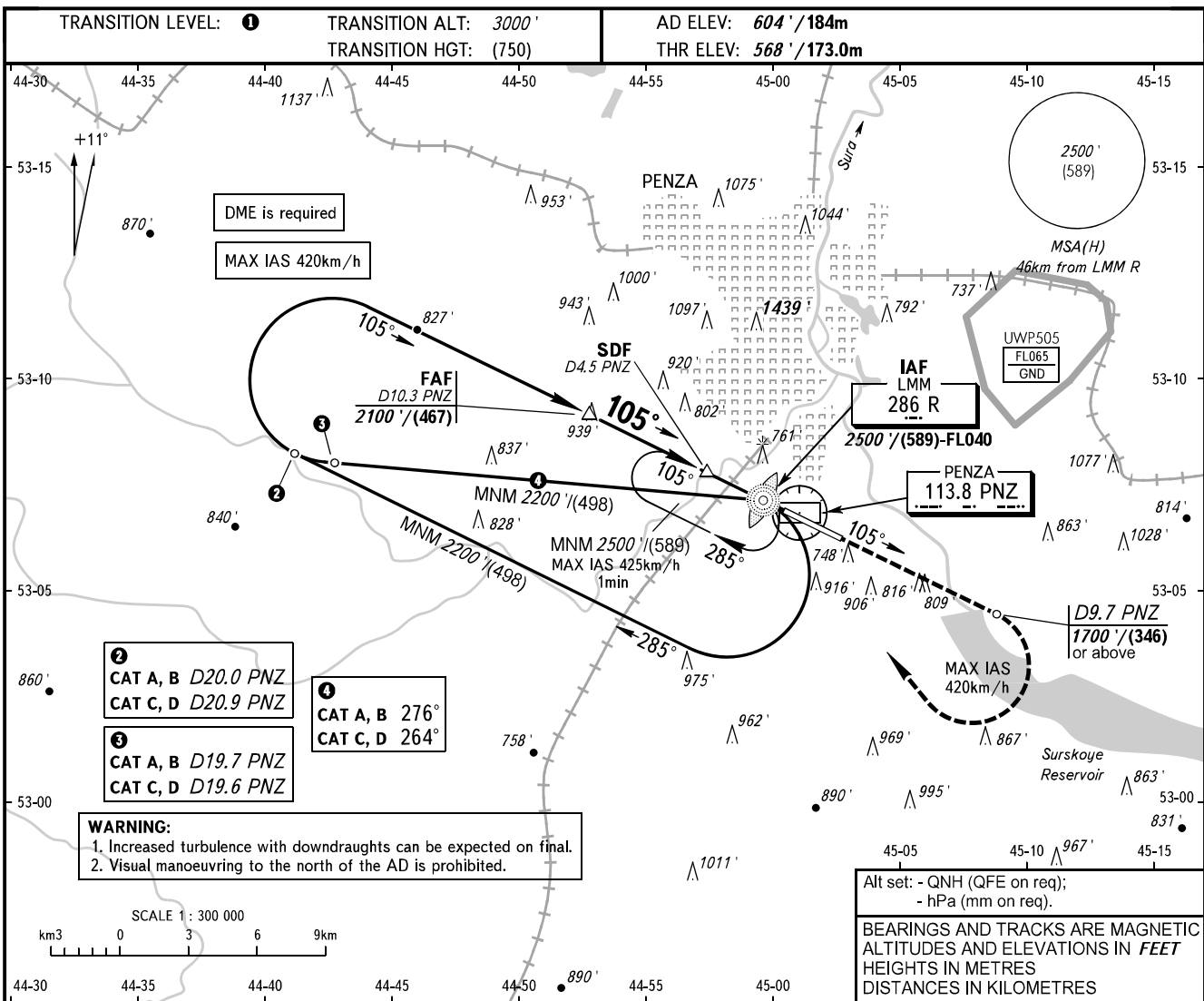


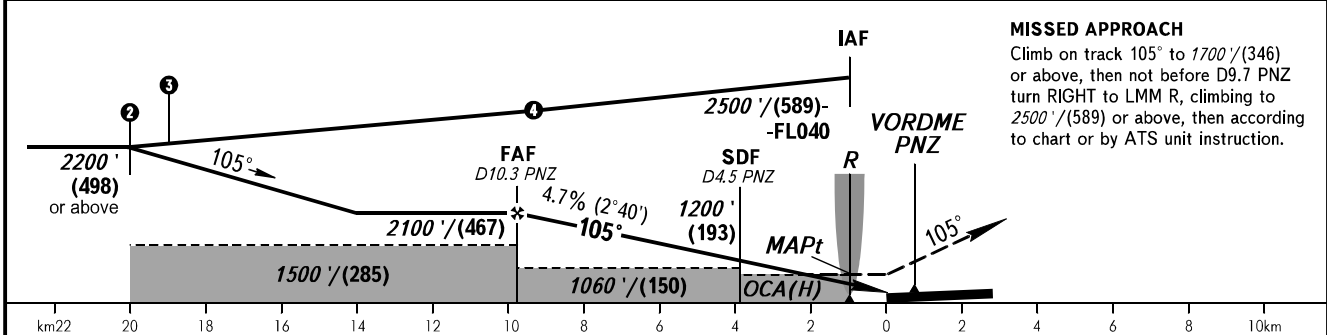
INSTRUMENT
APPROACH
CHART - ICAO

VYSHKA 120.700

PENZA, RUSSIA
PENZA
NDB Z RWY 11



DME PNZ	10.3	9.0	7.0	5.0	3.0
ALTITUDE/HEIGHT	2100' / (467)	1900' / (406)	1560' / (303)	1280' / (218)	975' / (125)



OCA(H)		A	B	C	D	① TRANSITION LEVEL:					
Straight-in	With SDF	970' (400') (123)	970' (400') (123)	970' (400') (123)	970' (400') (123)	- FL040 when QNH is 1013 hPa (760mm mercury column) or above;					
	Approach	1060' (500') (150)	1060' (500') (150)	1060' (500') (150)	1060' (500') (150)	- FL050 when QNH is 977 hPa (733mm mercury column) or above, but less than 1013 hPa (760mm mercury column);					
Circling		1220' (610') (188)	1240' (630') (194)	1340' (730') (225)	1380' (770') (237)	- FL060 when QNH is less than 977 hPa (733mm mercury column).					
GROUND SPEED		km/h	150	180	210	240	270	300	330	360	390
RATE OF DESCENT		m/s	2.0	2.4	2.8	3.1	3.5	3.9	4.3	4.7	5.1
		ft / min	385	463	540	617	694	771	848	925	1002

CHANGE: Heading