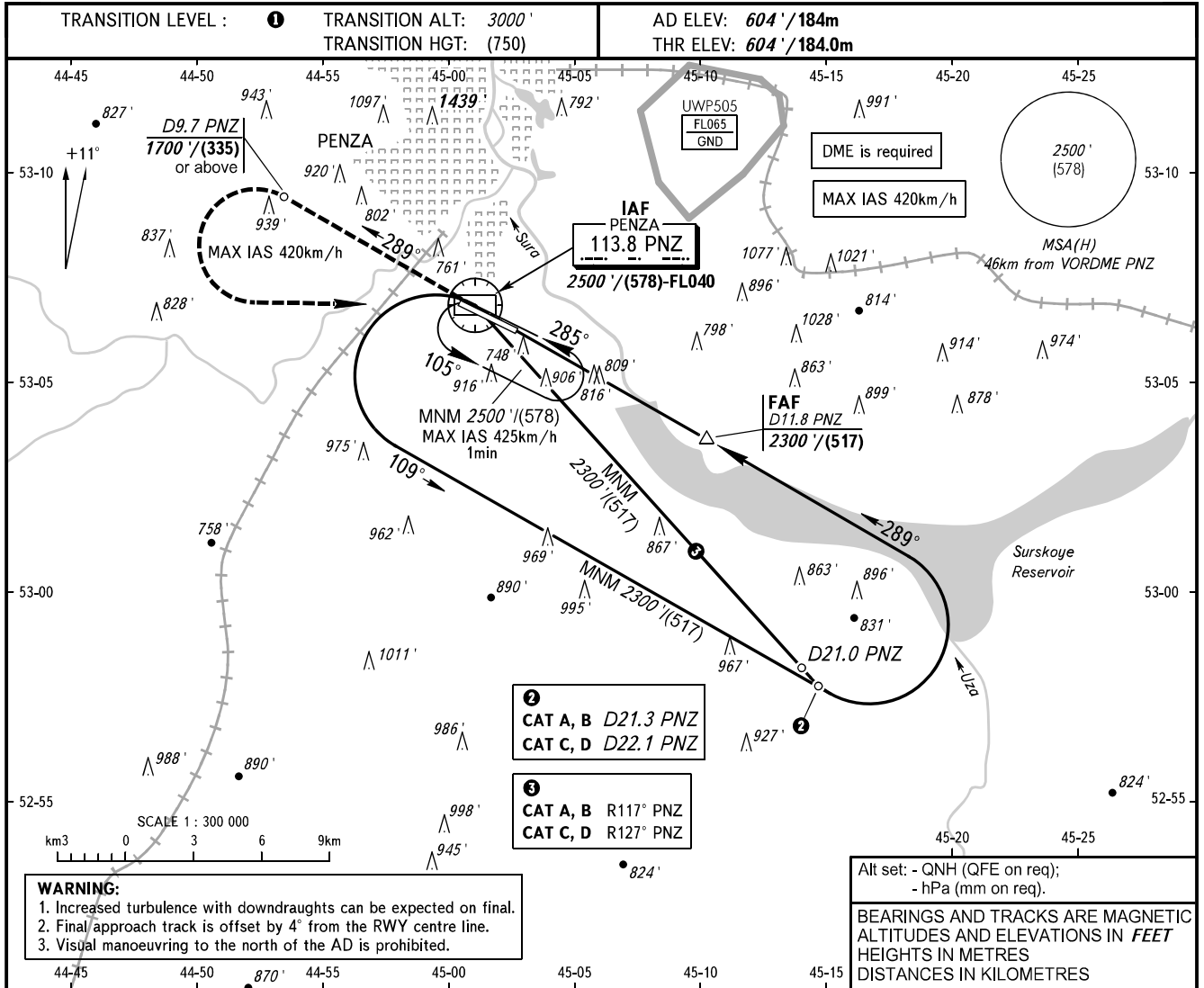


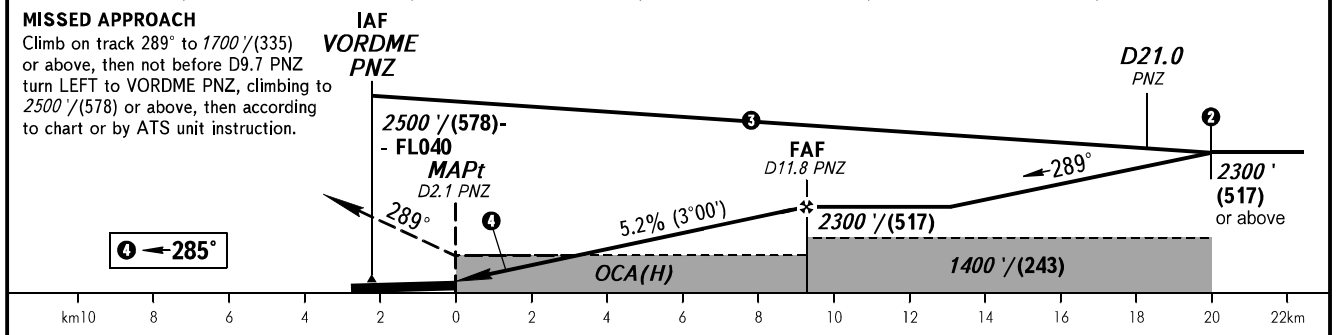
**INSTRUMENT
APPROACH
CHART - ICAO**

VYSHKA **120.700**

PENZA, RUSSIA
PENZA
VOR RWY 29



DME PNZ	5.0	7.0	9.0	11.0	11.8
ALTITUDE/HEIGHT	1140' / (164)	1485' / (269)	1825' / (373)	2165' / (476)	2300' / (517)



OCA(H)		A	B	C	D
Straight-in Approach		1120' (510') (158)	1120' (510') (158)	1120' (510') (158)	1120' (510') (158)
Circling		1220' (610') (188)	1240' (630') (194)	1340' (730') (225)	1380' (770') (237)

① TRANSITION LEVEL:
- FL040 when QNH is 1013 hPa (760mm mercury column) or above;
- FL050 when QNH is 977 hPa (733mm mercury column) or above, but less than 1013 hPa (760mm mercury column);
- FL060 when QNH is less than 977 hPa (733mm mercury column).

GROUND SPEED		km/h	150	180	210	240	270	300	330	360	390
RATE OF DESCENT		m/s	2.2	2.6	3.0	3.5	3.9	4.3	4.8	5.2	5.6
		ft/min	427	512	597	682	768	853	938	1024	1109