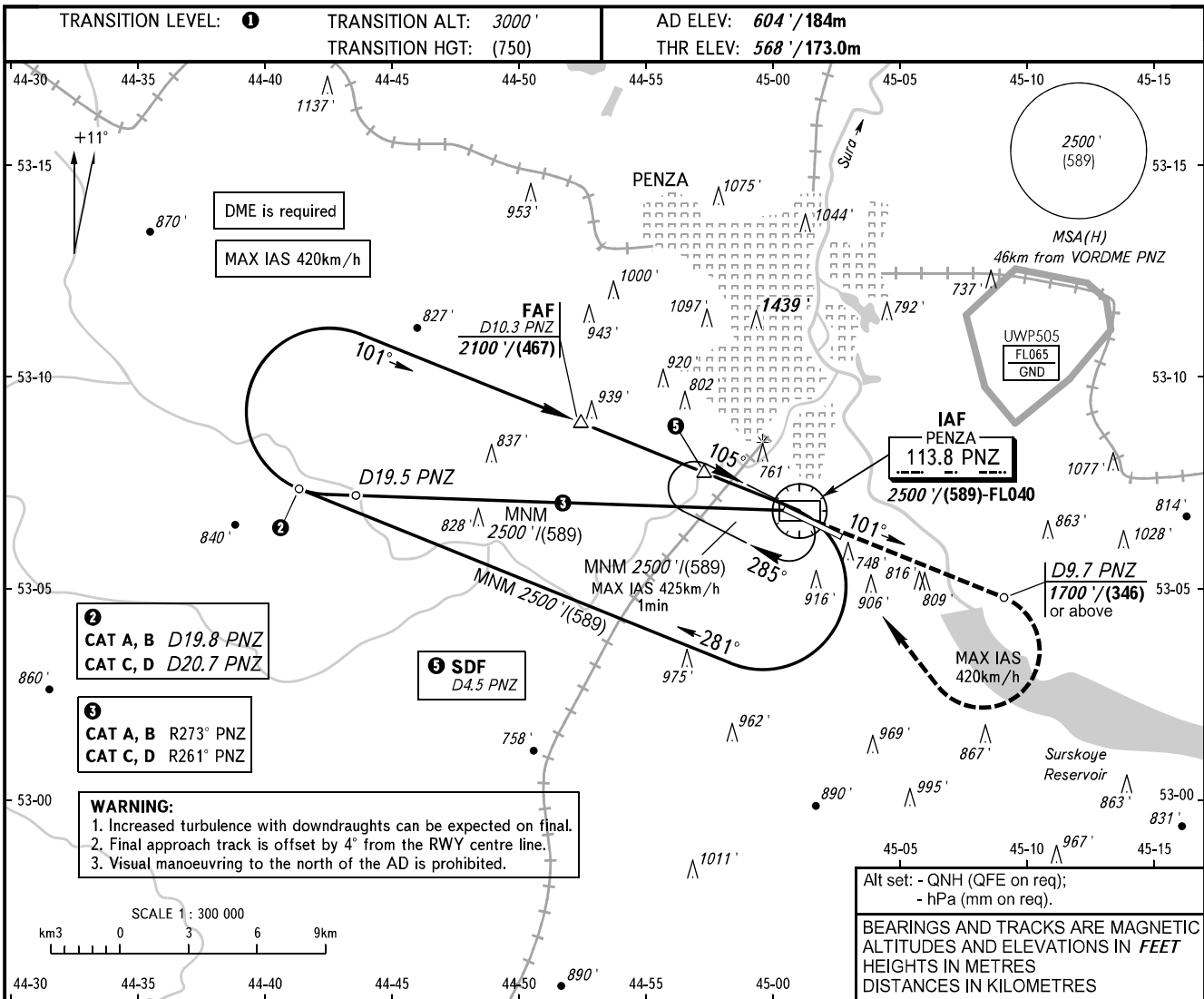


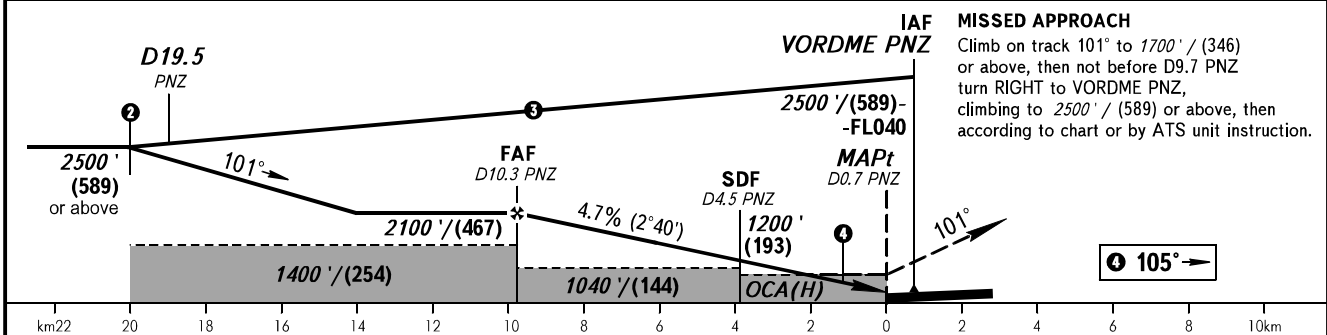
**INSTRUMENT
APPROACH
CHART - ICAO**

VYSHKA **120.700**

PENZA, RUSSIA
PENZA
VOR RWY 11



DME PNZ	10.3	9.0	7.0	5.0	3.0
ALTITUDE/HEIGHT	2100' / (467)	1900' / (406)	1560' / (303)	1280' / (218)	975' / (125)



OCA(H)		A	B	C	D	① TRANSITION LEVEL: - FLO40 when QNH is 1013 hPa (760mm mercury column) or above; - FLO50 when QNH is 977 hPa (733mm mercury column) or above, but less than 1013 hPa (760mm mercury column); - FLO60 when QNH is less than 977 hPa (733mm mercury column).					
Straight-in	With SDF	940' (370') (114)	940' (370') (114)	940' (370') (114)	940' (370') (114)						
	WO SDF	1040' (470') (144)	1040' (470') (144)	1040' (470') (144)	1040' (470') (144)						
Approach		1040' (470') (144)	1040' (470') (144)	1040' (470') (144)	1040' (470') (144)						
Circling		1220' (610') (188)	1240' (630') (194)	1340' (730') (225)	1380' (770') (237)						
GROUND SPEED		km/h	150	180	210	240	270	300	330	360	390
RATE OF DESCENT		m/s	2.0	2.4	2.8	3.1	3.5	3.9	4.3	4.7	5.1
		ft/min	385	463	540	617	694	771	848	925	1002

CHANGE: Heading