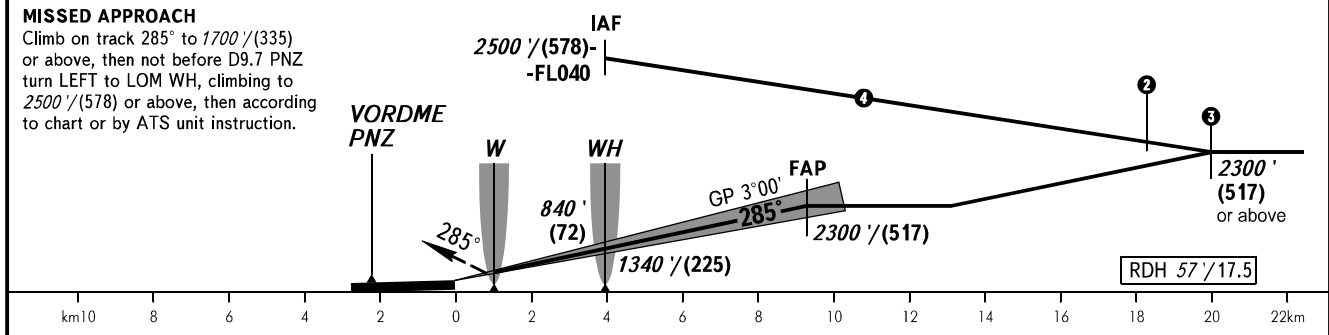
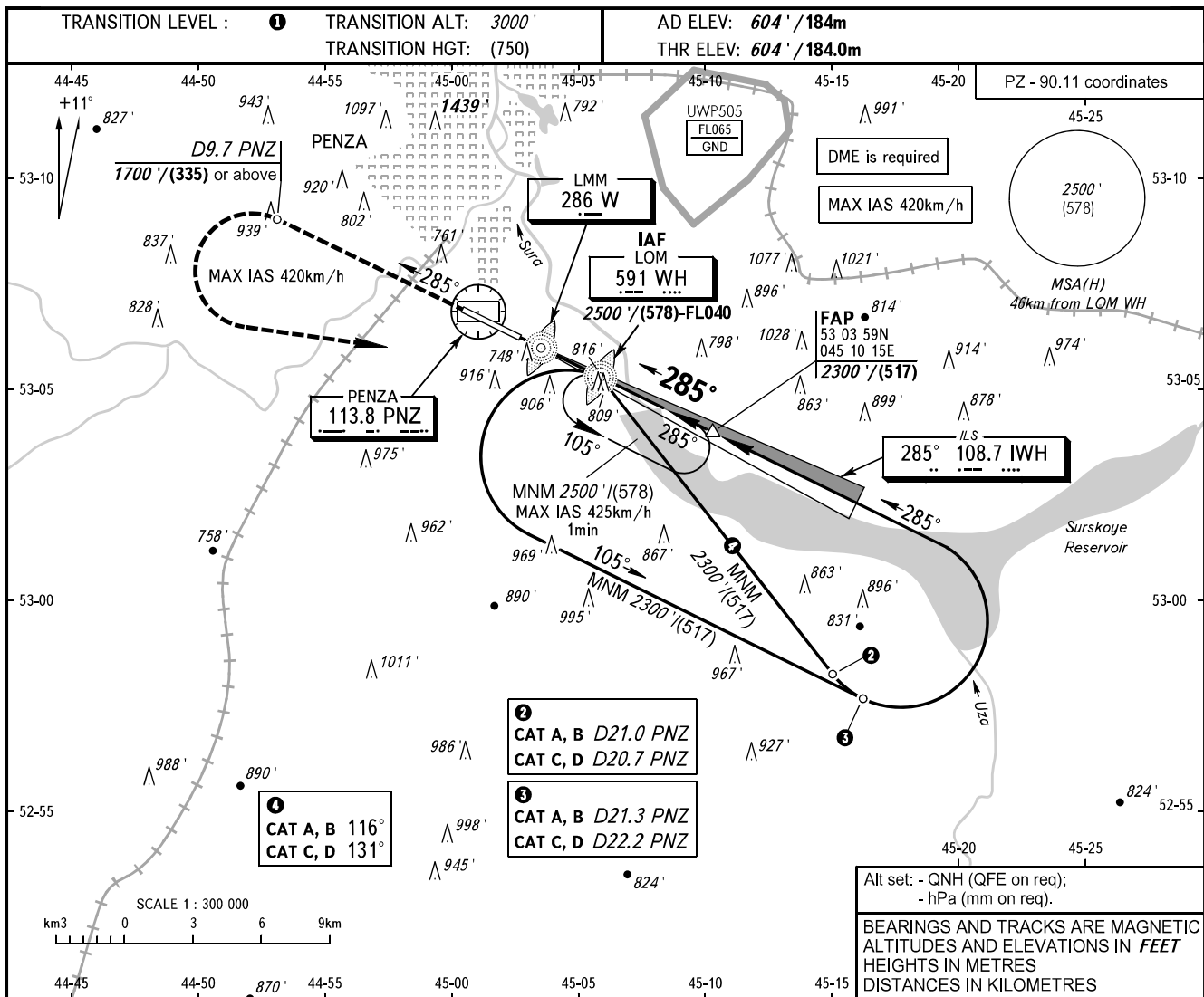


**INSTRUMENT
APPROACH
CHART - ICAO**

VYSHKA **120.700**

PENZA, RUSSIA
PENZA
ILS X RWY 29



OCA(H)	A	B	C	D
Straight-in	747' (143') (44)	755' (151') (47)	764' (160') (49)	779' (175') (54)
Approach				
Circling	1220' (610') (188)	1240' (630') (194)	1340' (730') (225)	1380' (770') (237)

① TRANSITION LEVEL:
- FL040 when QNH is 1013 hPa (760mm mercury column) or above;
- FL050 when QNH is 977 hPa (733mm mercury column) or above, but less than 1013 hPa (760mm mercury column);
- FL060 when QNH is less than 977 hPa (733mm mercury column).

WARNING
Increased turbulence with downdraughts can be expected on final.

Visual manoeuvring to the north of the AD is prohibited.										
GROUND SPEED	km/h	150	180	210	240	270	300	330	360	390
RATE OF DESCENT	m/s	2.2	2.6	3.0	3.5	3.9	4.3	4.8	5.2	5.6
	ft/min	427	512	597	682	768	853	938	1024	1109