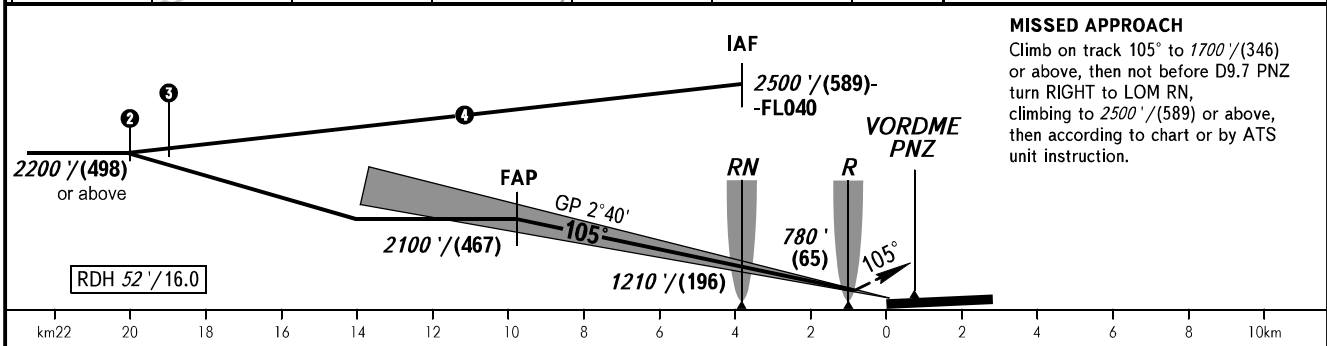
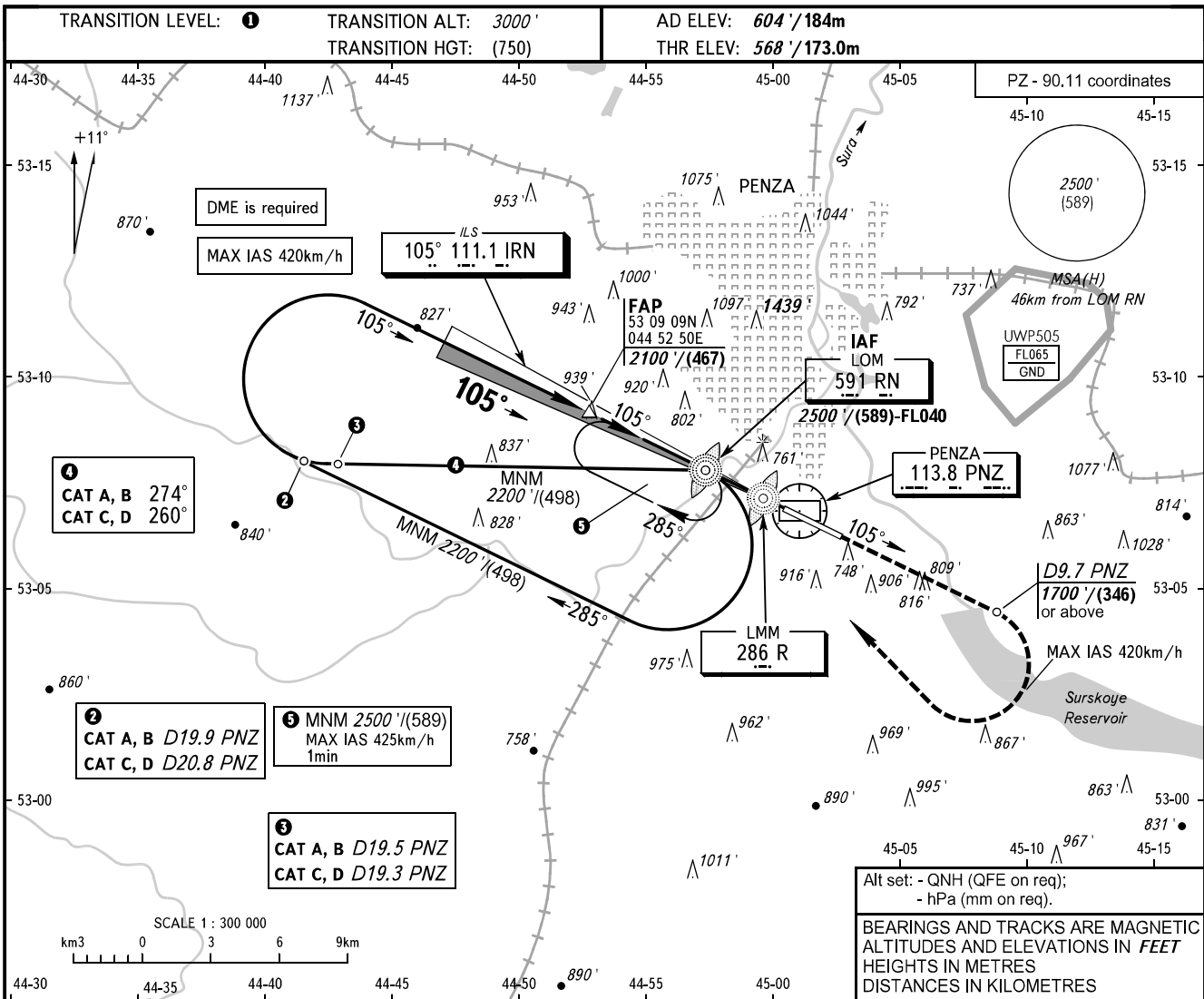


**INSTRUMENT
APPROACH
CHART - ICAO**

VYSHKA **120.700**

PENZA, RUSSIA
PENZA
ILS X RWY 11



OCA(H)		A	B	C	D
Straight-in Approach		715' (147') (45)	723' (155') (48)	732' (164') (50)	743' (175') (54)
Circling		1220' (610') (188)	1240' (630') (194)	1340' (730') (225)	1380' (770') (237)
Visual manoeuvring to the north of the AD is prohibited.					

1 **TRANSITION LEVEL:**

- FL040 when QNH is 1013 hPa (760mm mercury column) or above;
- FL050 when QNH is 977 hPa (733mm mercury column) or above, but less than 1013 hPa (760mm mercury column);
- FL060 when QNH is less than 977 hPa (733mm mercury column).

WARNING
 Increased turbulence with downdraughts can be expected on final.

GROUND SPEED	km/h									
	150	180	210	240	270	300	330	360	390	
RATE OF DESCENT	m/s									
	2.0	2.4	2.8	3.1	3.5	3.9	4.3	4.7	5.1	
	ft/min									
	385	463	540	617	694	771	848	925	1002	

CHANGE: Heading