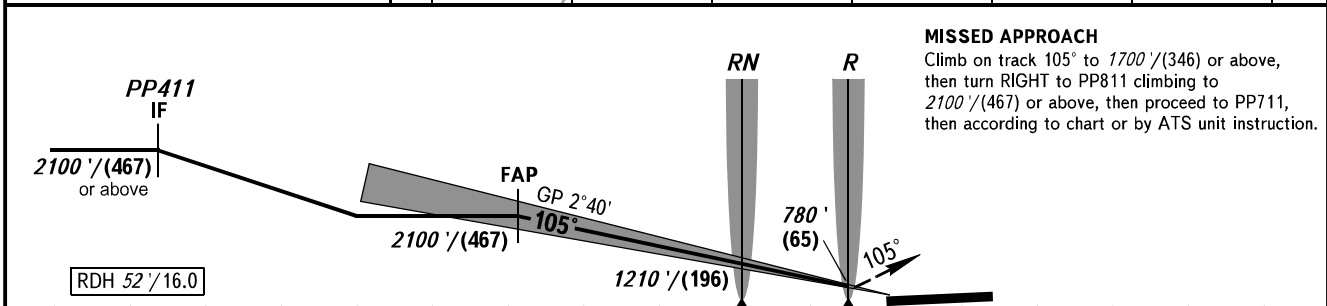
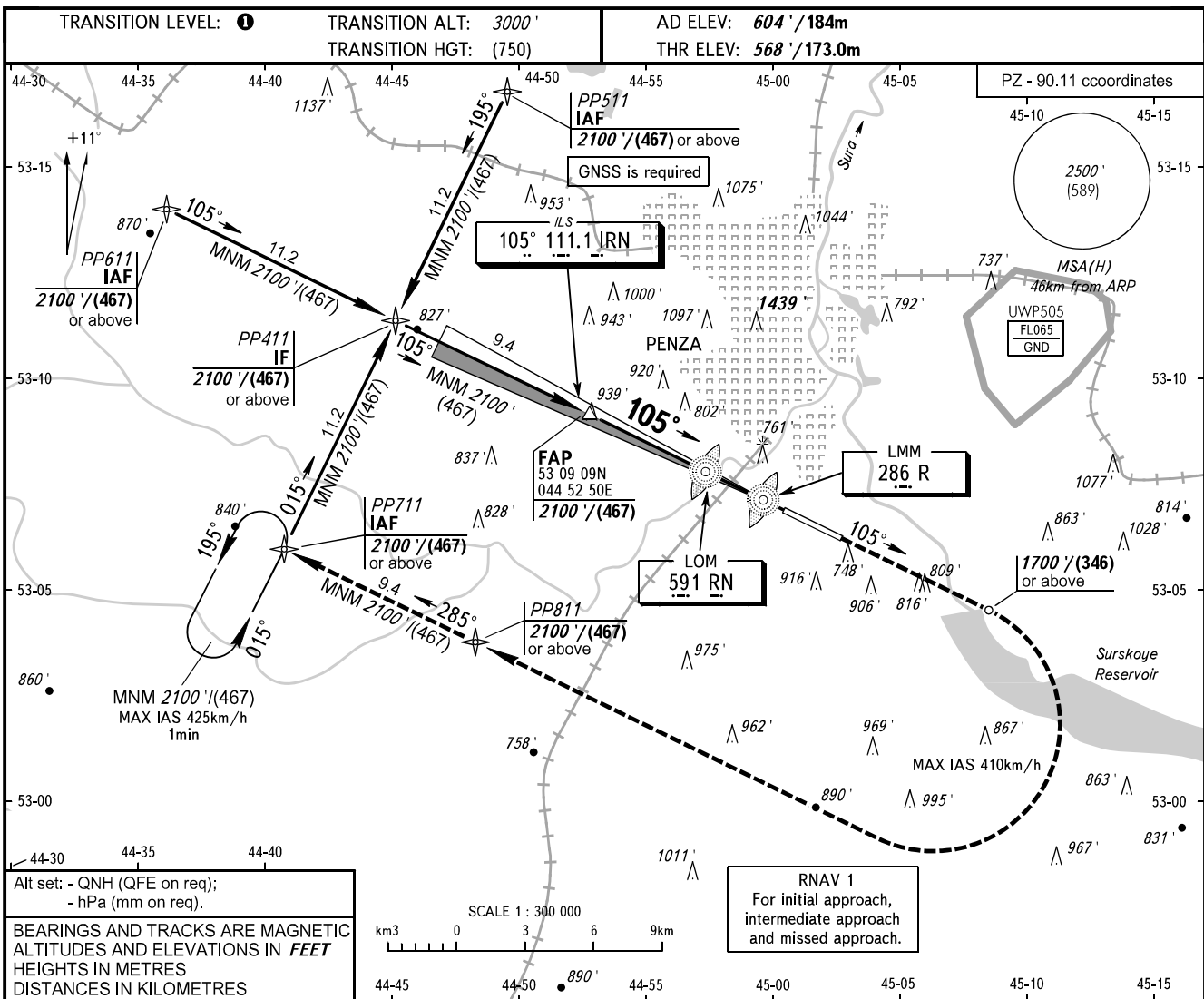


**INSTRUMENT  
APPROACH  
CHART - ICAO**

VYSHKA **120.700**

**PENZA, RUSSIA**  
PENZA  
ILS Z RWY 11



OCA(H)		A	B	C	D
Straight-in Approach		715' (147') (45)	723' (155') (48)	732' (164') (50)	743' (175') (54)
Circling		1220' (610') (188)	1240' (630') (194)	1340' (730') (225)	1380' (770') (237)

Visual manoeuvring to the north of the AD is prohibited.

**1** TRANSITION LEVEL:  
 - FLO40 when QNH is 1013 hPa (760mm mercury column) or above;  
 - FLO50 when QNH is 977 hPa (733mm mercury column) or above,  
 but less than 1013 hPa (760mm mercury column);  
 - FLO60 when QNH is less than 977 hPa (733mm mercury column).

**WARNING**  
 Increased turbulence with downdraughts  
 can be expected on final.

GROUND SPEED	km/h	150	180	210	240	270	300	330	360	390
		m/s	2.0	2.4	2.8	3.1	3.5	3.9	4.3	4.7
RATE OF DESCENT	ft/min	385	463	540	617	694	771	848	925	1002

CHANGE: Heading