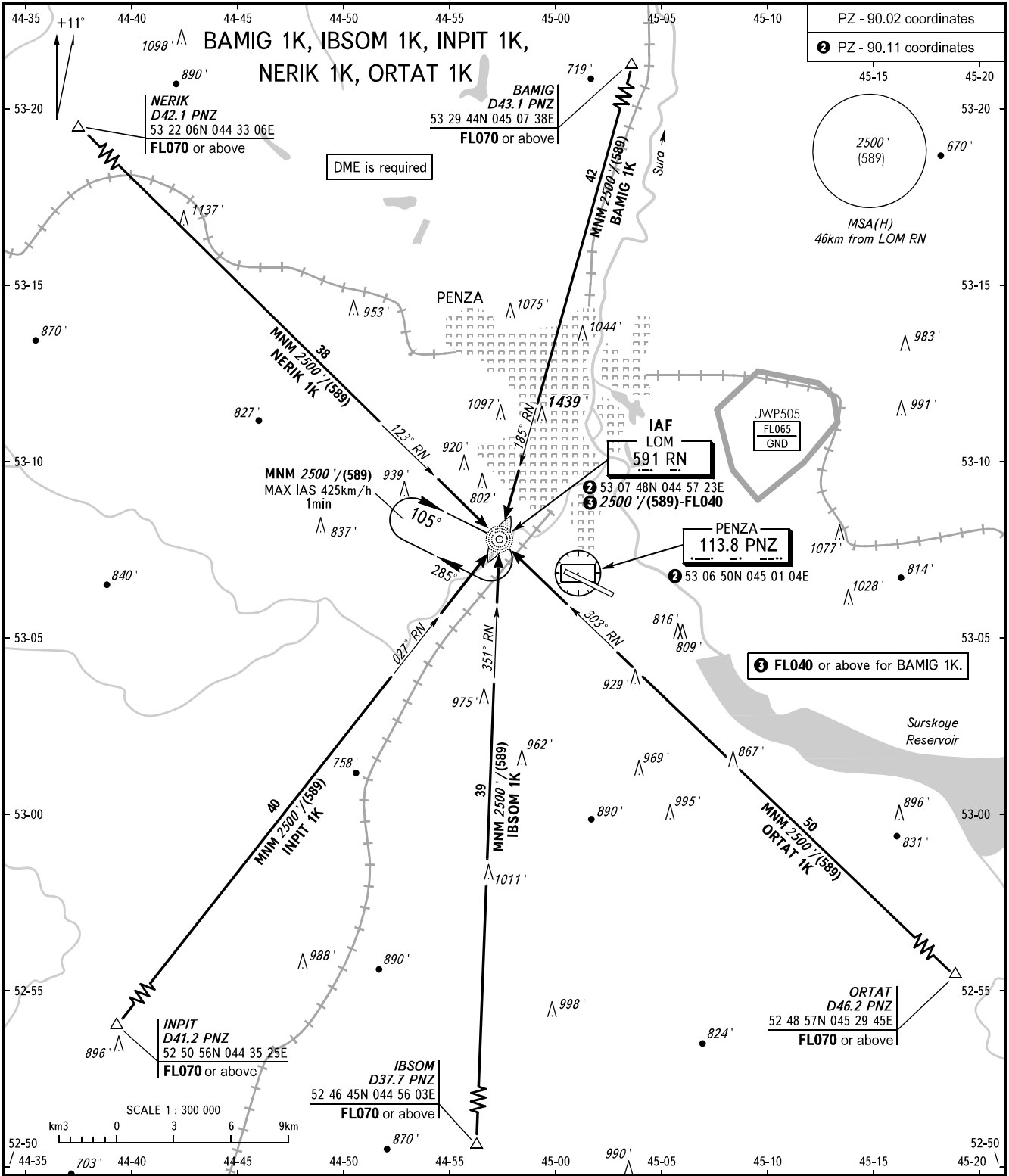


STANDARD ARRIVAL CHART
INSTRUMENT (STAR) - ICAO

PENZA, RUSSIA
PENZA
RWY 11

TRANSITION
LEVEL: 1



<p>VYSHKA 120.700</p> <p>BEARINGS AND TRACKS ARE MAGNETIC ALTITUDES AND ELEVATIONS IN FEET HEIGHTS IN METRES DISTANCES IN KILOMETRES</p>	<p>1 TRANSITION LEVEL:</p> <ul style="list-style-type: none"> - FL040 when QNH is 1013 hPa (760mm mercury column) or above; - FL050 when QNH is 977 hPa (733mm mercury column) or above, but less than 1013 hPa (760mm mercury column); - FL060 when QNH is less than 977 hPa (733mm mercury column). <p>Alt set: - QNH (QFE on req); - hPa (mm on req).</p>
---	--

CHANGE: Heading, ORTAT