

STANDARD ARRIVAL CHART  
INSTRUMENT (STAR) - ICAO

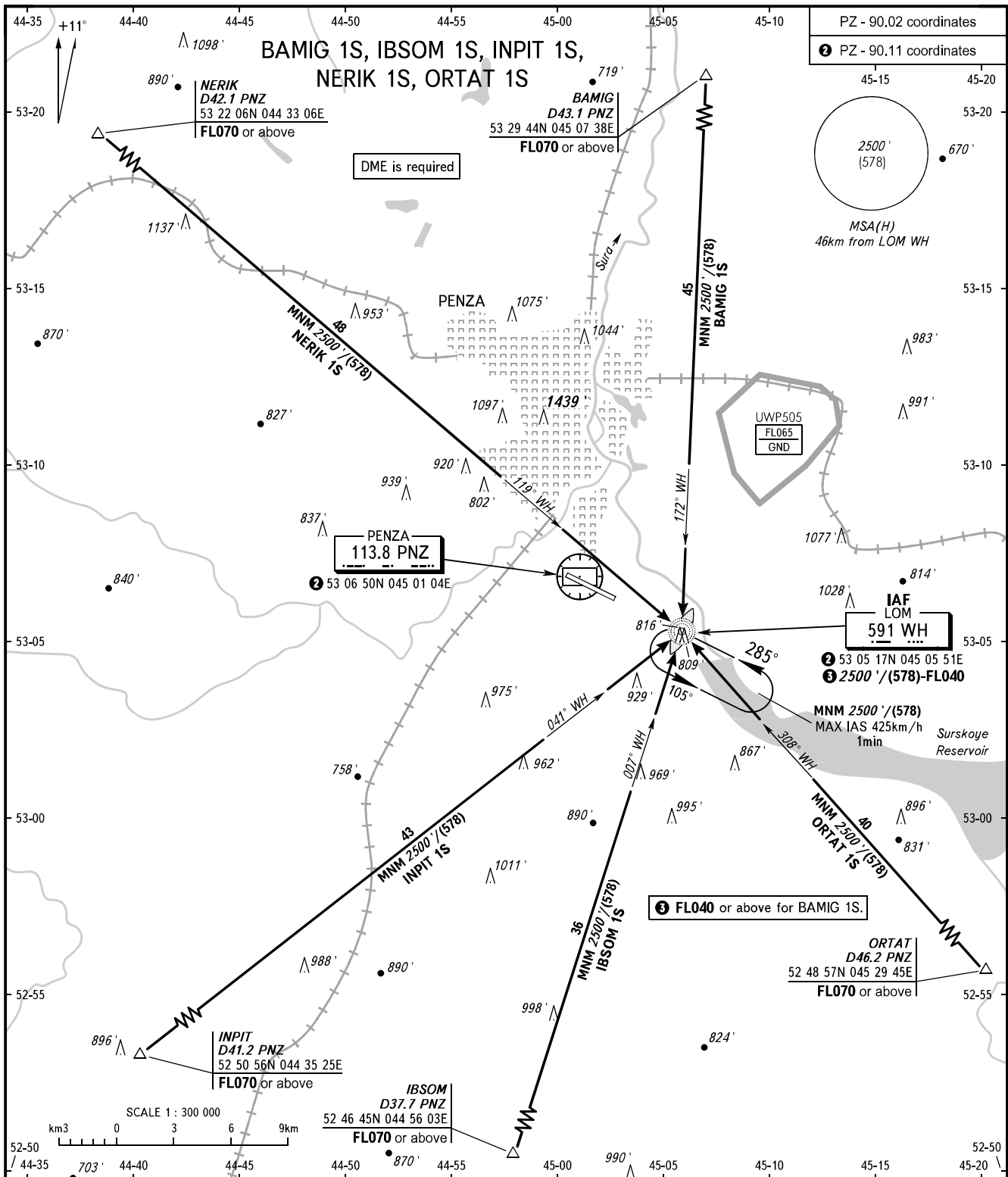
PENZA, RUSSIA

PENZA

RWY 29

TRANSITION  
LEVEL: ①

PZ - 90.02 coordinates  
② PZ - 90.11 coordinates



① TRANSITION LEVEL:

- FL040 when QNH is 1013 hPa (760mm mercury column) or above;
- FL050 when QNH is 977 hPa (733mm mercury column) or above, but less than 1013 hPa (760mm mercury column);
- FL060 when QNH is less than 977 hPa (733mm mercury column).

BEARINGS AND TRACKS ARE MAGNETIC  
ALTITUDES AND ELEVATIONS IN FEET  
HEIGHTS IN METRES  
DISTANCES IN KILOMETRES

Alt set: - QNH (QFE on req);  
- hPa (mm on req).