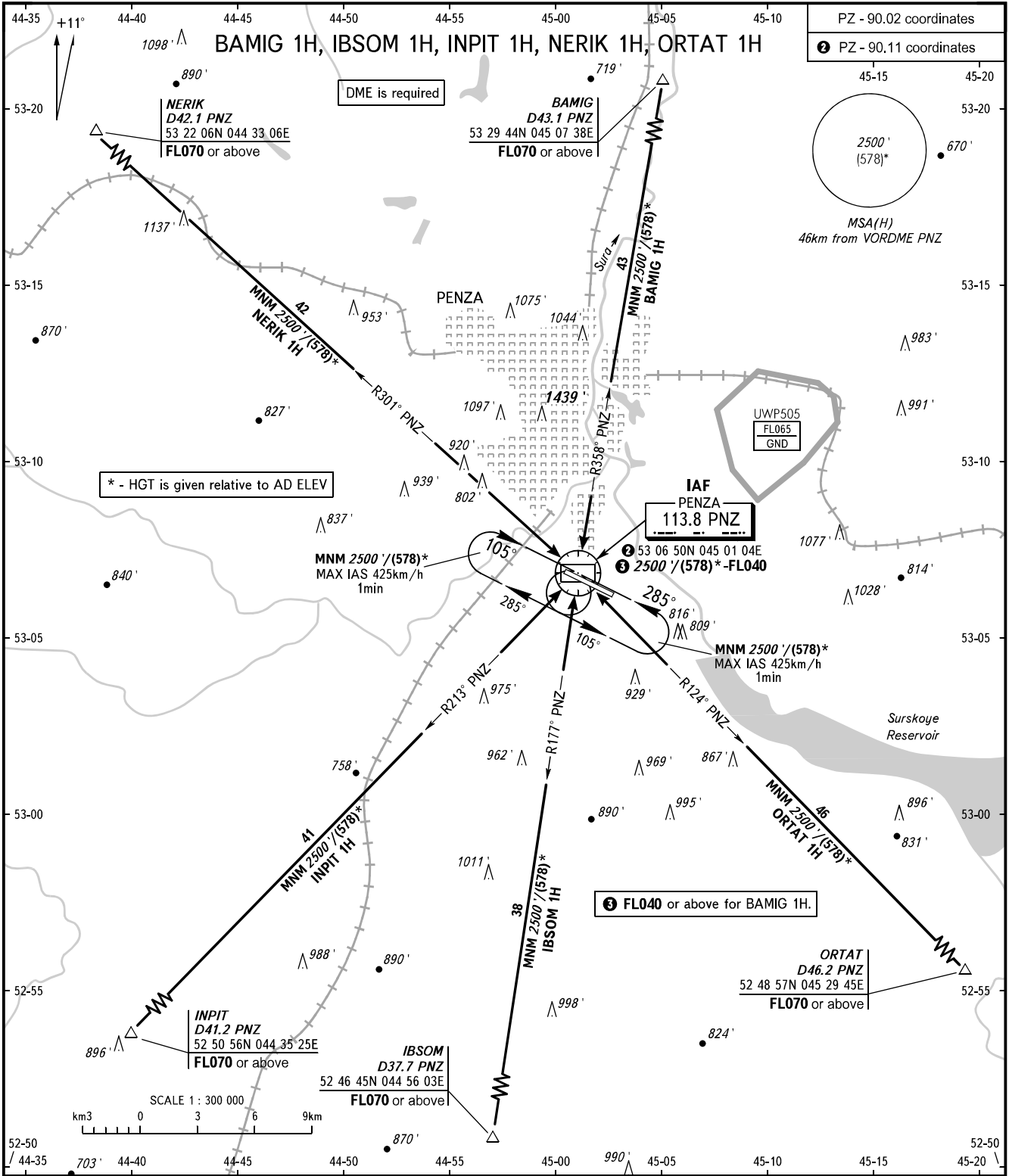


STANDARD ARRIVAL CHART  
INSTRUMENT (STAR) - ICAO

PENZA, RUSSIA  
PENZA  
RWY 11/29

TRANSITION  
LEVEL: **1**



<p>VYSHKA <b>120.700</b></p>	<p><b>① TRANSITION LEVEL:</b> - FL040 when QNH is 1013 hPa (760mm mercury column) or above; - FL050 when QNH is 977 hPa (733mm mercury column) or above, but less than 1013 hPa (760mm mercury column); - FL060 when QNH is less than 977 hPa (733mm mercury column).</p>
<p>BEARINGS AND TRACKS ARE MAGNETIC ALTITUDES AND ELEVATIONS IN FEET HEIGHTS IN METRES DISTANCES IN KILOMETRES</p>	<p>Alt set: - QNH (QFE on req); - hPa (mm on req).</p>

CHANGE: Heading, ORTAT