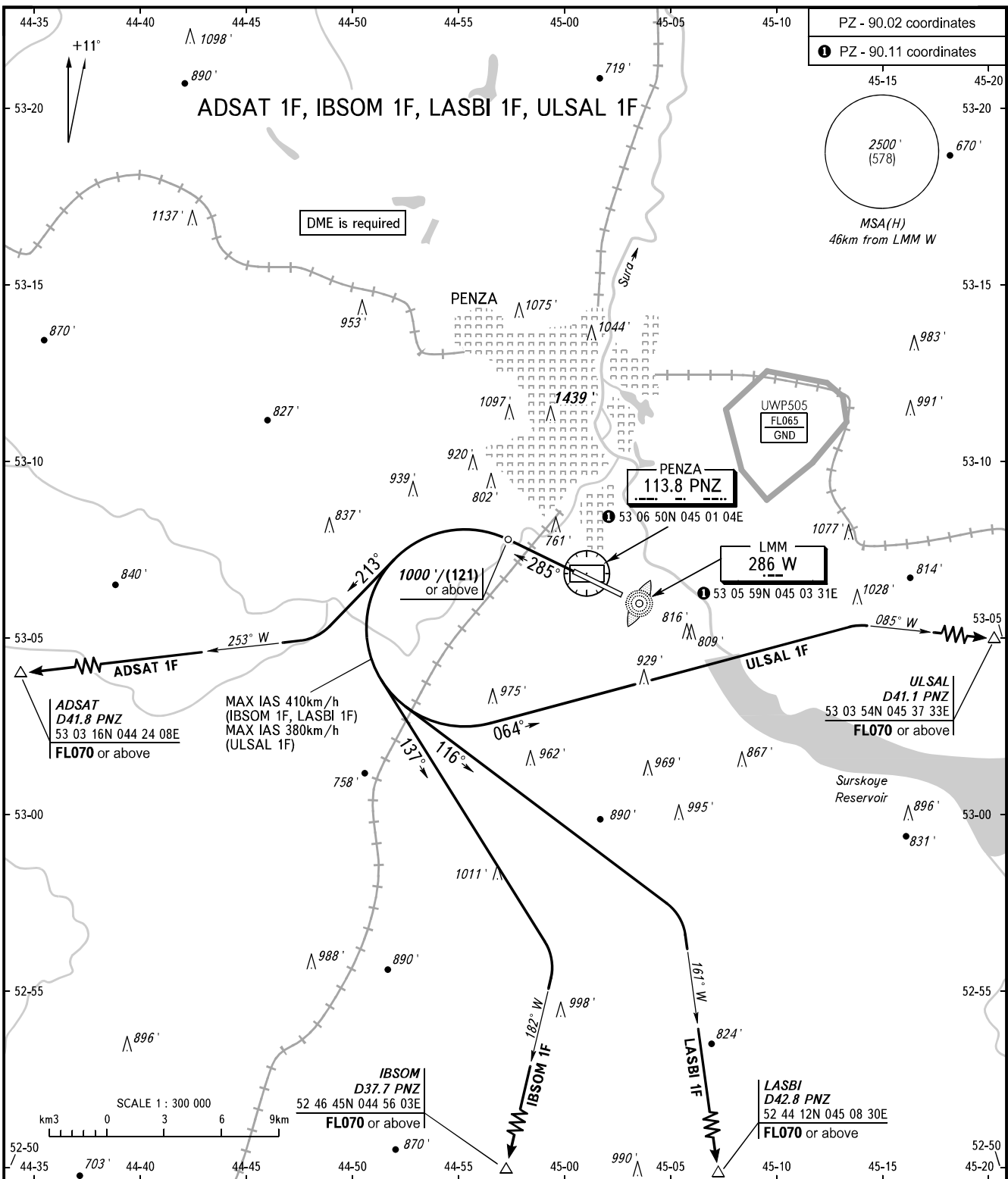


STANDARD DEPARTURE CHART  
INSTRUMENT (SID) - ICAO

TRANSITION ALT: 3000'  
TRANSITION HGT: (750)

PENZA, RUSSIA  
PENZA  
RWY 29



|                           |
|---------------------------|
| PZ - 90.02 coordinates    |
| ● PZ - 90.11 coordinates  |
| 2500'<br>(578)            |
| MSA(H)<br>46km from LMM W |

VYSHKA 120.700

**WARNING**  
The minimum climb gradients are as follows:  
- 4.8% up to FL070 for ADSAT 1F;  
- 5.0% up to FL070 for IBSOM 1F;  
- 4.4% up to FL070 for LASBI 1F;  
- 4.6% up to FL070 for ULSAL 1F.

BEARINGS AND TRACKS ARE MAGNETIC  
ALTITUDES AND ELEVATIONS IN FEET  
HEIGHTS IN METRES  
DISTANCES IN KILOMETRES

Alt set: - QNH (QFE on req);  
- hPa (mm on req).

CHANGE: Heading; WARNING; ADSAT