

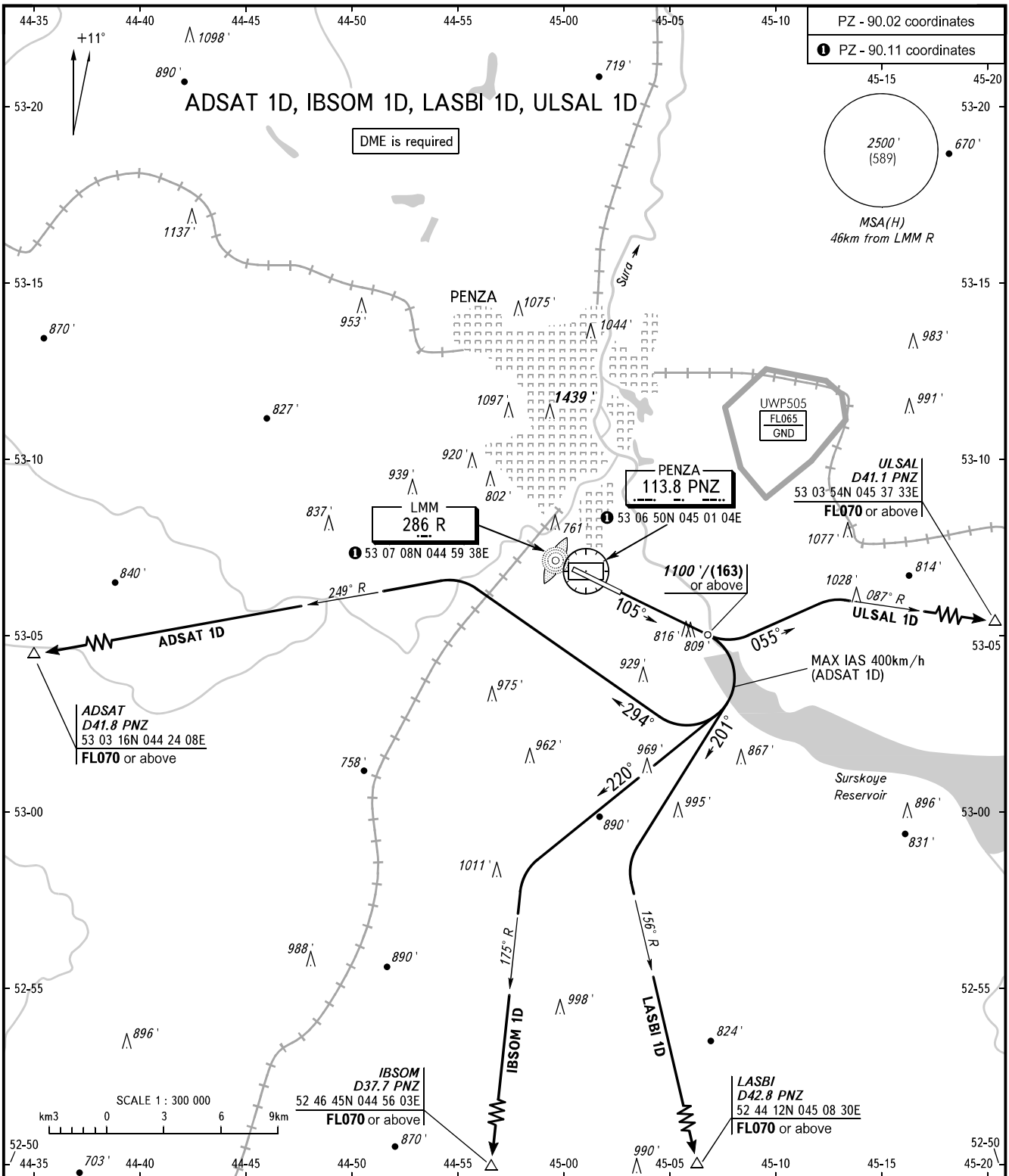
STANDARD DEPARTURE CHART
INSTRUMENT (SID) - ICAO

TRANSITION ALT: 3000'
TRANSITION HGT: (750)

PENZA, RUSSIA

PENZA

RWY 11



<p>VYSHKA 120.700</p> <p>BEARINGS AND TRACKS ARE MAGNETIC ALTITUDES AND ELEVATIONS IN FEET HEIGHTS IN METRES DISTANCES IN KILOMETRES</p>	<p>WARNING:</p> <ol style="list-style-type: none"> MNM climb gradient 4.1% up to 900'/(102). The minimum climb gradients are as follows: <ul style="list-style-type: none"> - 4.4% up to FL070 for ADSAT 1D; - 5.1% up to FL070 for IBSOM 1D, ULSAL 1D; - 4.7% up to FL070 for LASBI 1D. <p>Alt set: - QNH (QFE on req); - hPa (mm on req).</p>
--	--