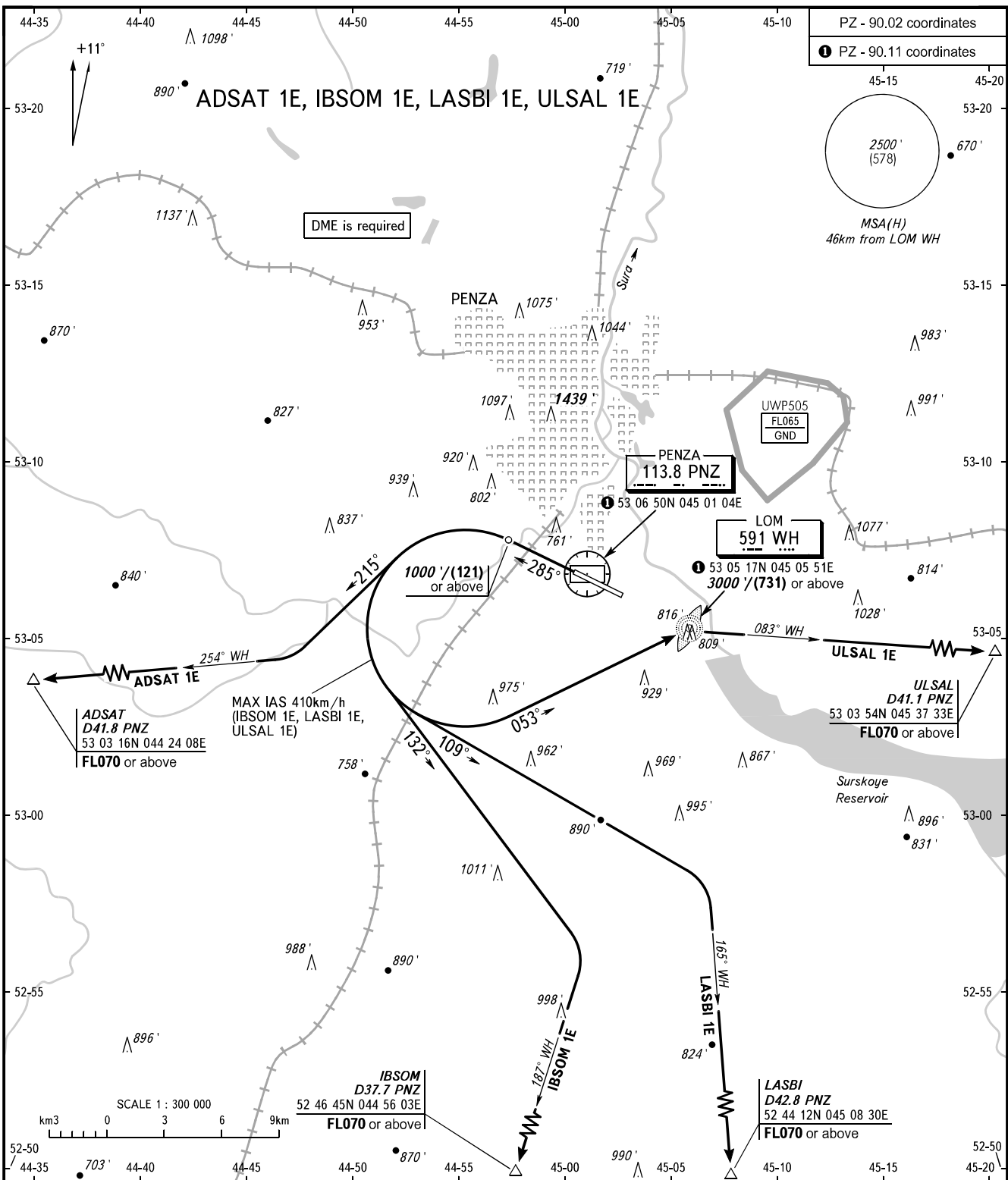


STANDARD DEPARTURE CHART  
INSTRUMENT (SID) - ICAO

TRANSITION ALT: **3000'**  
TRANSITION HGT: **(750)**

**PENZA, RUSSIA**  
PENZA  
RWY 29



VYSHKA **120.700**

**WARNING**

- The minimum climb gradients are as follows:
- 4.8% up to FL070 for ADSAT 1E;
  - 5.0% up to FL070 for IBSOM 1E;
  - 4.4% up to FL070 for LASBI 1E;
  - 4.6% up to FL070 for ULSAL 1E.

BEARINGS AND TRACKS ARE MAGNETIC  
ALTITUDES AND ELEVATIONS IN **FEET**  
HEIGHTS IN METRES  
DISTANCES IN KILOMETRES

Alt set: - QNH (QFE on req);  
- hPa (mm on req).