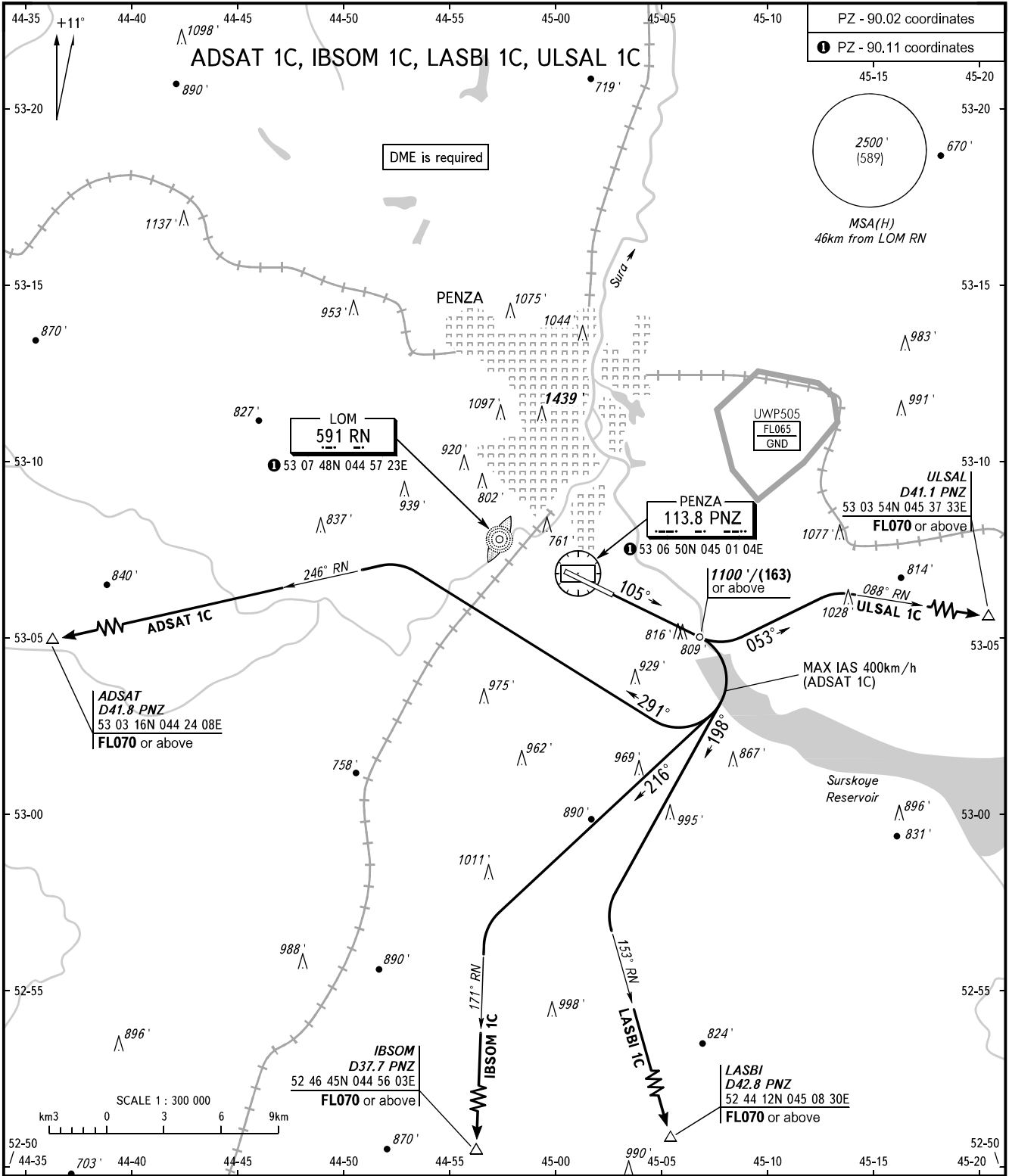


STANDARD DEPARTURE CHART  
INSTRUMENT (SID) - ICAO

TRANSITION ALT: **3000'**  
TRANSITION HGT: **(750)**

**PENZA, RUSSIA**  
PENZA  
RWY 11



<p>BEARINGS AND TRACKS ARE MAGNETIC ALTITUDES AND ELEVATIONS IN FEET HEIGHTS IN METRES DISTANCES IN KILOMETRES</p>	<p>Alt set: - QNH (QFE on req); - hPa (mm on req).</p>	<p><b>WARNING:</b></p> <ol style="list-style-type: none"> <li>1. MNM climb gradient 4.1% up to 900'/(102).</li> <li>2. The minimum climb gradients are as follows: <ul style="list-style-type: none"> <li>- 4.4% up to FL070 for ADSAT 1C;</li> <li>- 5.1% up to FL070 for IBSOM 1C, ULSAL 1C;</li> <li>- 4.7% up to FL070 for LASBI 1C.</li> </ul> </li> </ol>
--	--	---