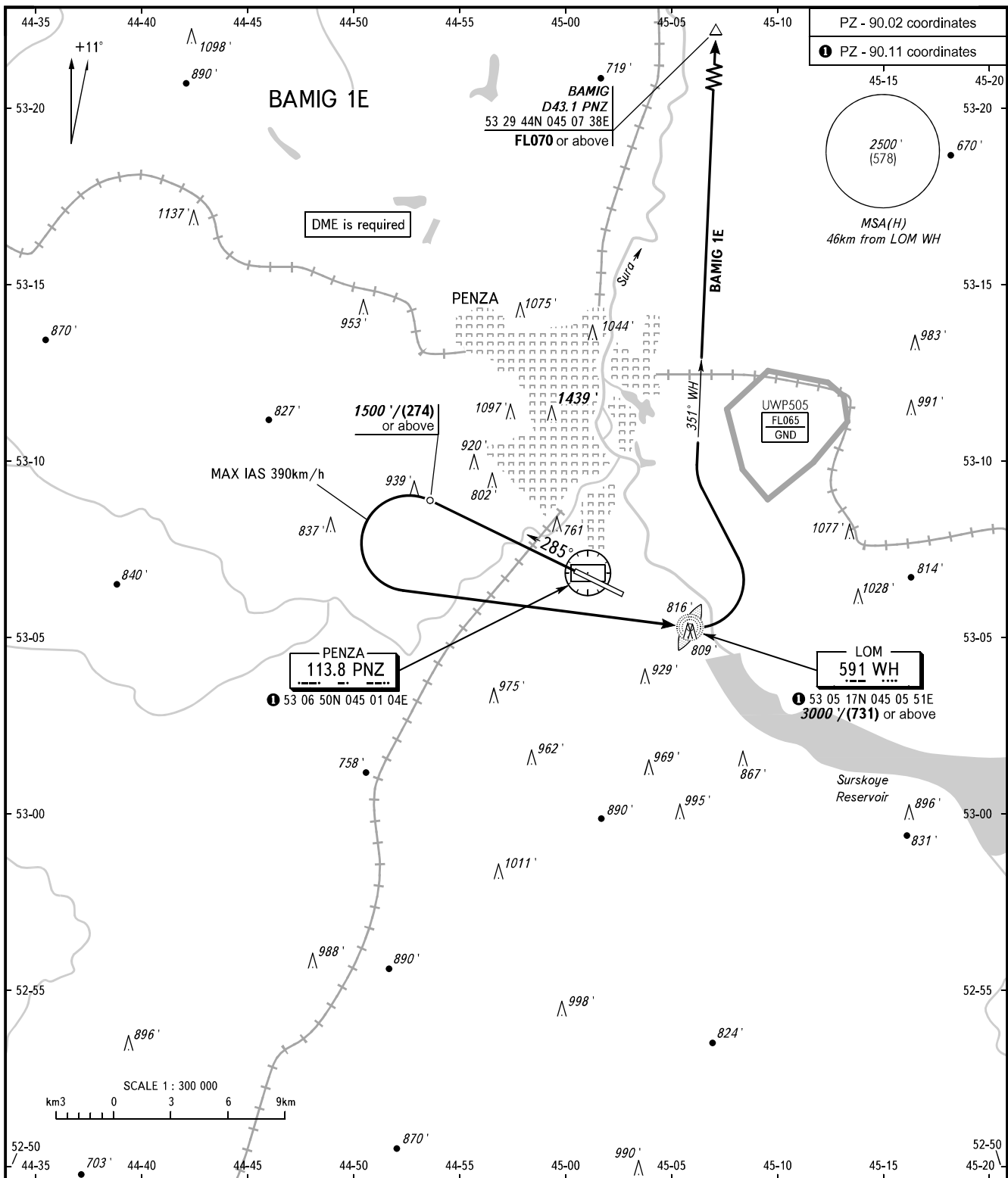


STANDARD DEPARTURE CHART  
INSTRUMENT (SID) - ICAO

TRANSITION ALT: 3000'  
TRANSITION HGT: (750)

PENZA, RUSSIA  
PENZA  
RWY 29



PZ - 90.02 coordinates	
● PZ - 90.11 coordinates	
45-15	45-20
2500' (578)	
MSA(H) 46km from LOM WH	
53-20	53-20

**PENZA**  
113.8 PNZ  
● 53 06 50N 045 01 04E

**LOM**  
591 WH  
● 53 05 17N 045 05 51E  
3000'/(731) or above

VYSHKA 120.700

**WARNING**  
Turn before DER is PROHIBITED.

BEARINGS AND TRACKS ARE MAGNETIC  
ALTITUDES AND ELEVATIONS IN FEET  
HEIGHTS IN METRES  
DISTANCES IN KILOMETRES

Alt set: - QNH (QFE on req);  
- hPa (mm on req).