

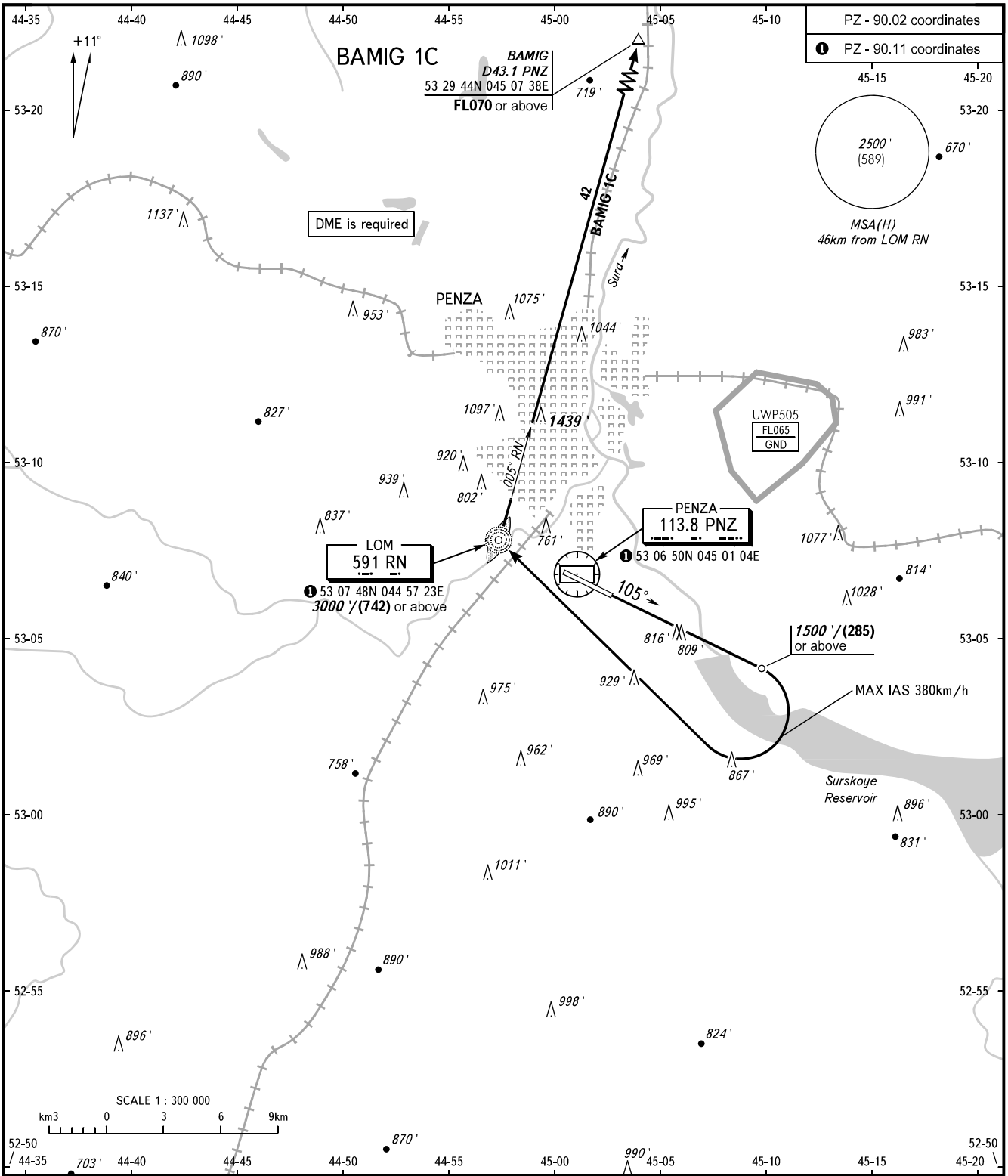
STANDARD DEPARTURE CHART
INSTRUMENT (SID) - ICAO

TRANSITION ALT: **3000'**
TRANSITION HGT: **(750)**

PENZA, RUSSIA

PENZA

RWY 11



VYSHKA 120.700	<p>WARNING: 1. MNM climb gradient 4.1% up to 900'/(102). 2. Turn before DER is PROHIBITED.</p>
BEARINGS AND TRACKS ARE MAGNETIC ALTITUDES AND ELEVATIONS IN FEET HEIGHTS IN METRES DISTANCES IN KILOMETRES	Alt set: - QNH (QFE on req); - hPa (mm on req).

CHANGE: Heading