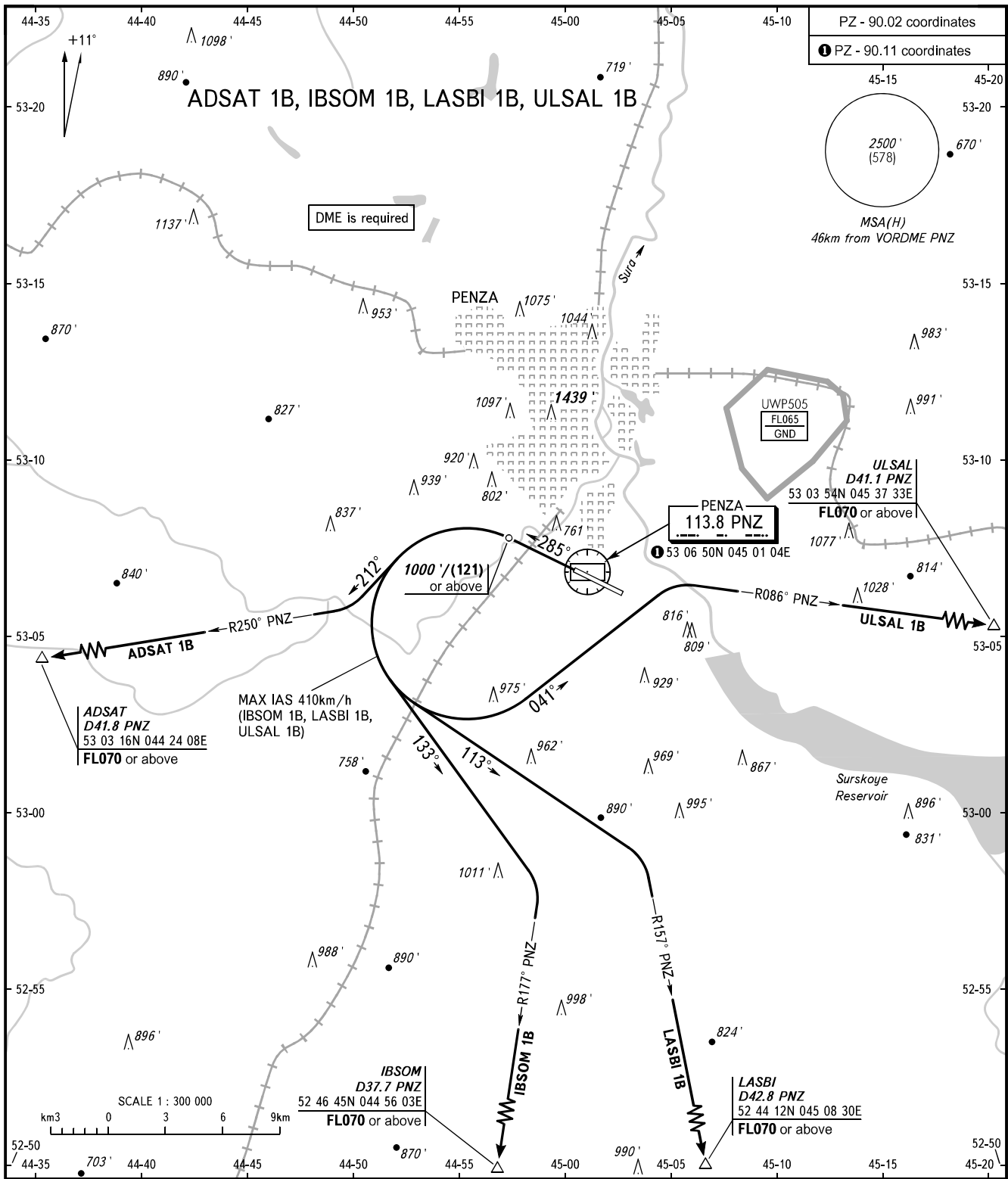


STANDARD DEPARTURE CHART
INSTRUMENT (SID) - ICAO

TRANSITION ALT: 3000'
TRANSITION HGT: (750)

PENZA, RUSSIA
PENZA
RWY 29



VYSHKA 120.700

WARNING

- The minimum climb gradients are as follows:
- 4.8% up to FL070 for ADSAT 1B;
 - 5.0% up to FL070 for IBSOM 1B;
 - 4.4% up to FL070 for LASBI 1B;
 - 4.6% up to FL070 for ULSAL 1B.

BEARINGS AND TRACKS ARE MAGNETIC
ALTITUDES AND ELEVATIONS IN FEET
HEIGHTS IN METRES
DISTANCES IN KILOMETRES

Alt set: - QNH (QFE on req);
- hPa (mm on req).