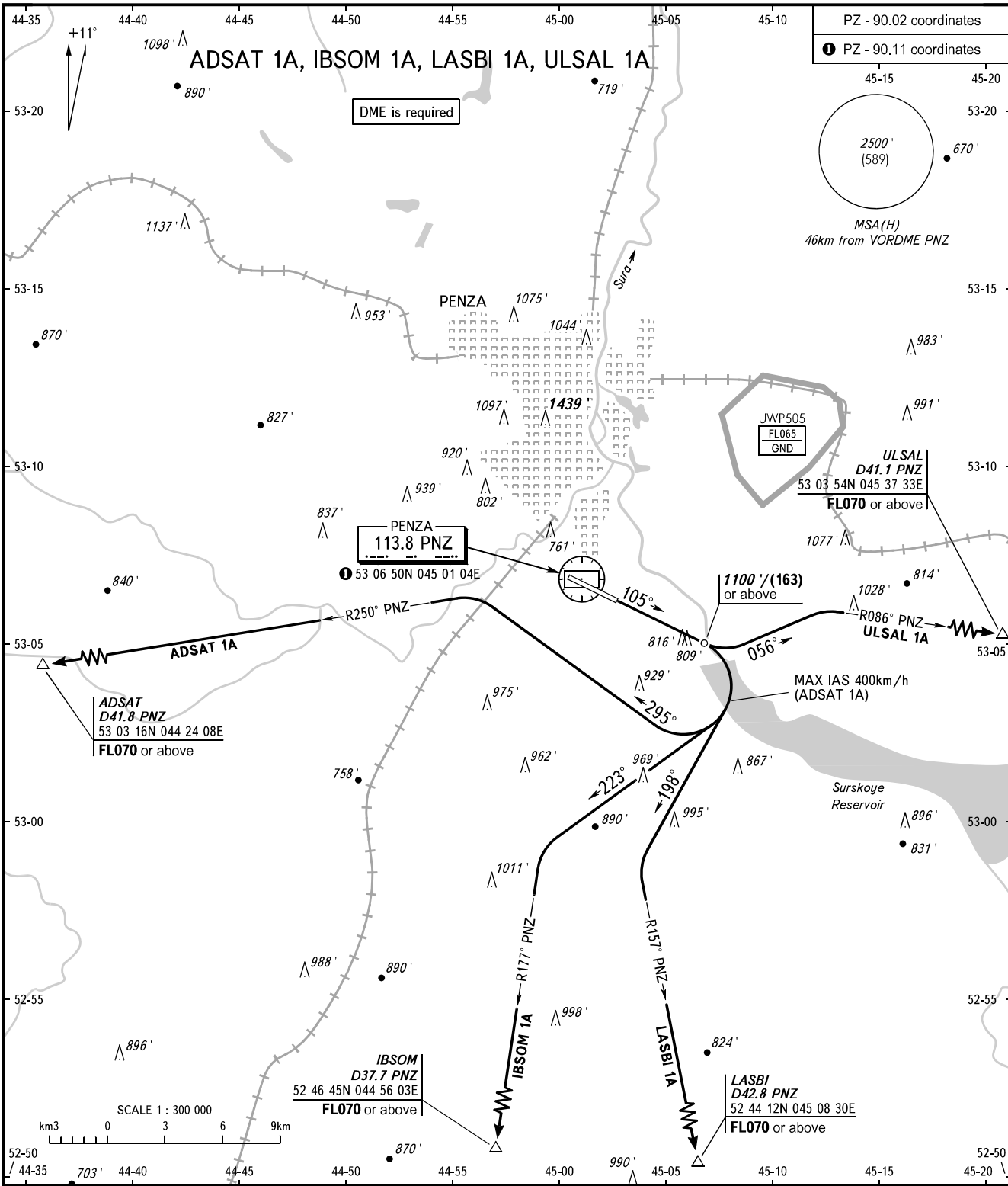


STANDARD DEPARTURE CHART
INSTRUMENT (SID) - ICAO

TRANSITION ALT: **3000'**
TRANSITION HGT: **(750)**

PENZA, RUSSIA
PENZA
RWY 11



- WARNING:**
- MNM climb gradient 4.1% up to 900'/(102).
 - The minimum climb gradients are as follows:
 - 4.4% up to FL070 for ADSAT 1A;
 - 5.1% up to FL070 for IBSOM 1A, ULSAL 1A;
 - 4.7% up to FL070 for LASBI 1A.

BEARINGS AND TRACKS ARE MAGNETIC
ALTITUDES AND ELEVATIONS IN FEET
HEIGHTS IN METRES
DISTANCES IN KILOMETRES

Alt set: - QNH (QFE on req);
- hPa (mm on req).

CHANGE: Heading, WARNING, ADSAT