

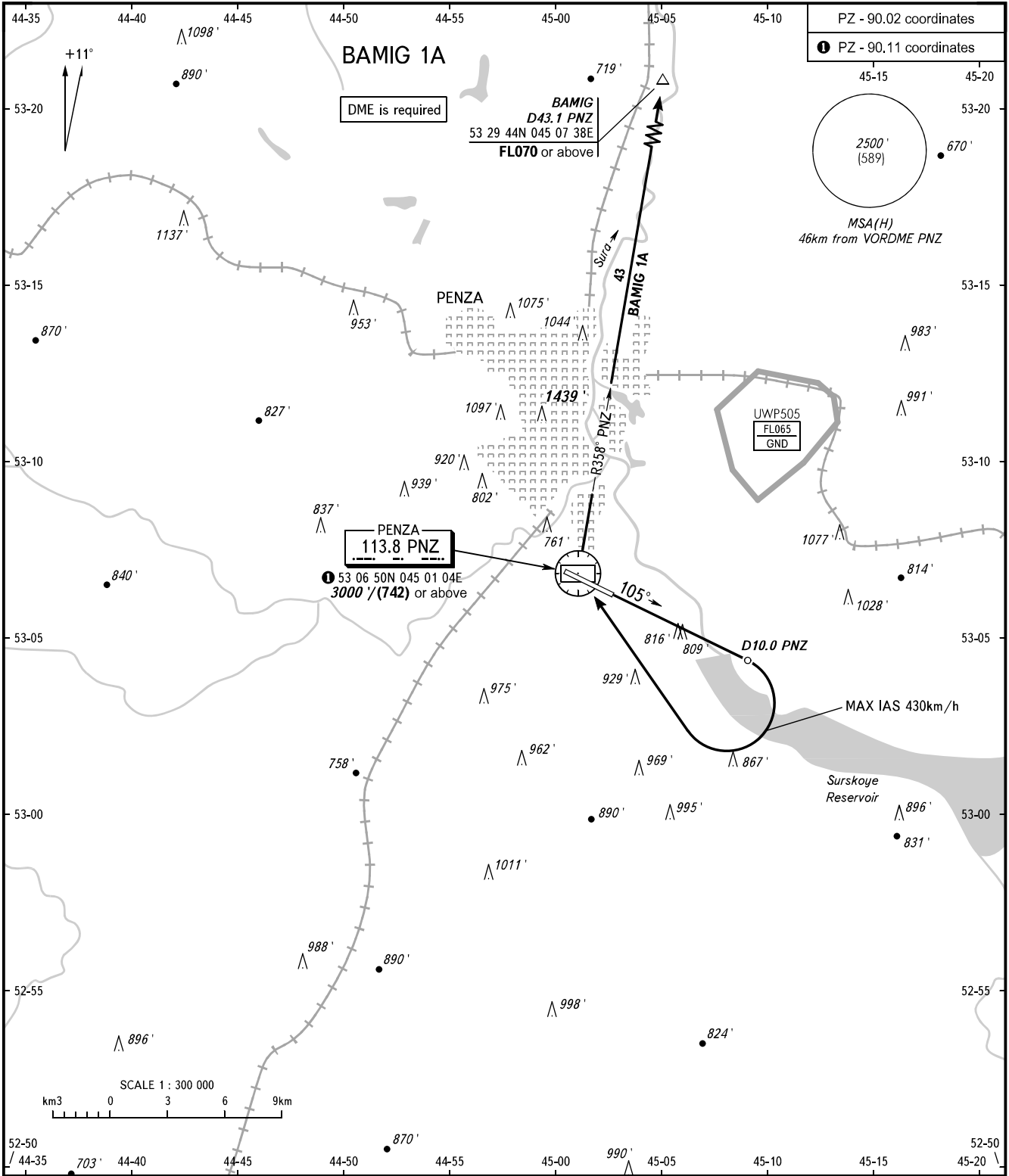
STANDARD DEPARTURE CHART
INSTRUMENT (SID) - ICAO

TRANSITION ALT: **3000'**
TRANSITION HGT: **(750)**

PENZA, RUSSIA

PENZA

RWY 11



VYSHKA **120.700**

WARNING
MNM climb gradient 4.1% up to 900'(102).

CHANGE: Heading

BEARINGS AND TRACKS ARE MAGNETIC
ALTITUDES AND ELEVATIONS IN FEET
HEIGHTS IN METRES
DISTANCES IN KILOMETRES

Alt set: - QNH (QFE on req);
- hPa (mm on req).