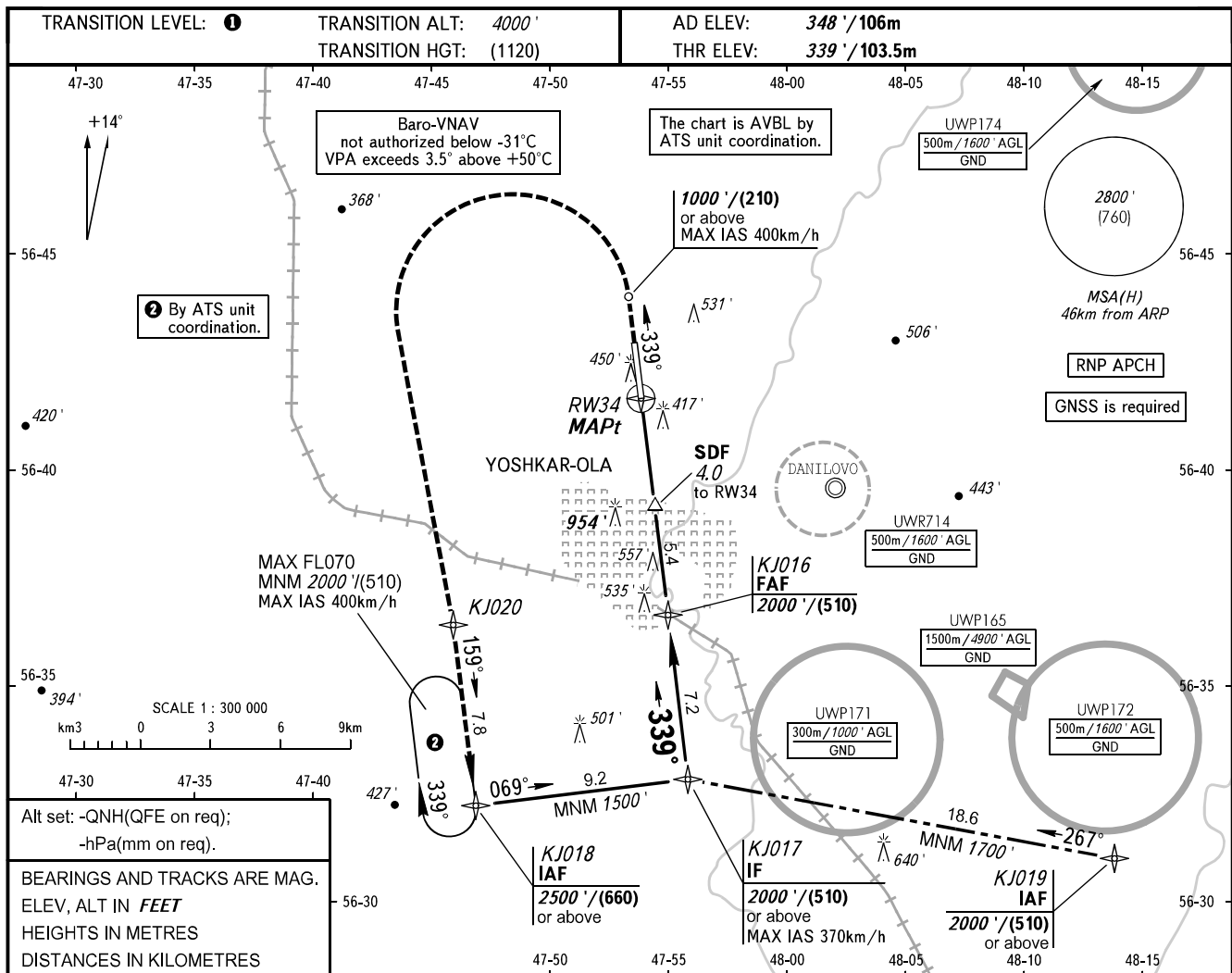


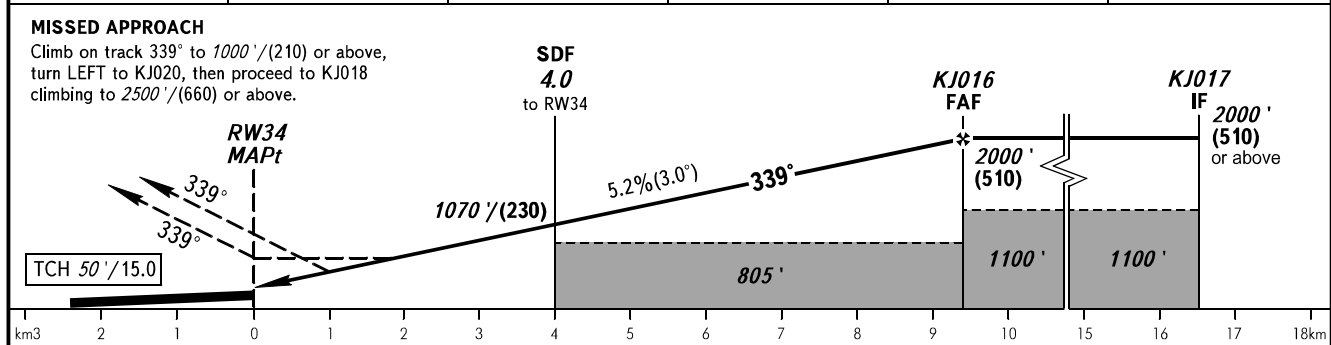
**INSTRUMENT  
APPROACH  
CHART - ICAO**

VYSHKA 119.700

**YOSHKAR-OLA, RUSSIA**  
YOSHKAR-OLA  
RNP RWY 34



DIST to RW34	2.0	4.0	6.0	8.0	9.4
ALTITUDE	730'	1070'	1415'	1755'	2000'



OCA(H)		A	B	C	D					
Straight-in Approach	LNAV/VNAV	550' (210')	560' (220')	570' (230')	580' (240')					
	LNAV	700' (360')	700' (360')	700' (360')	700' (360')					
Circling		830' (490')	840' (500')	1350' (1010')	1350' (1010')					
GROUND SPEED	km/h	150	180	210	240	270	300	330	360	390
RATE OF DESCENT	m/s	2.2	2.6	3.0	3.5	3.9	4.3	4.8	5.2	5.6
	ft/min	427	512	597	682	768	853	938	1024	1109

**1** TRANSITION LEVEL:  
 - FL050 when QNH is 1013 hPa (760mm mercury column) or above;  
 - FL060 when QNH is 977 hPa (733mm mercury column) or above, but less than 1013 hPa (760mm mercury column);  
 - FL070 when QNH is less than 977 hPa (733mm mercury column).  
**WARNING**  
 MAPt at RW34. Timing not authorized for defining MAPt.