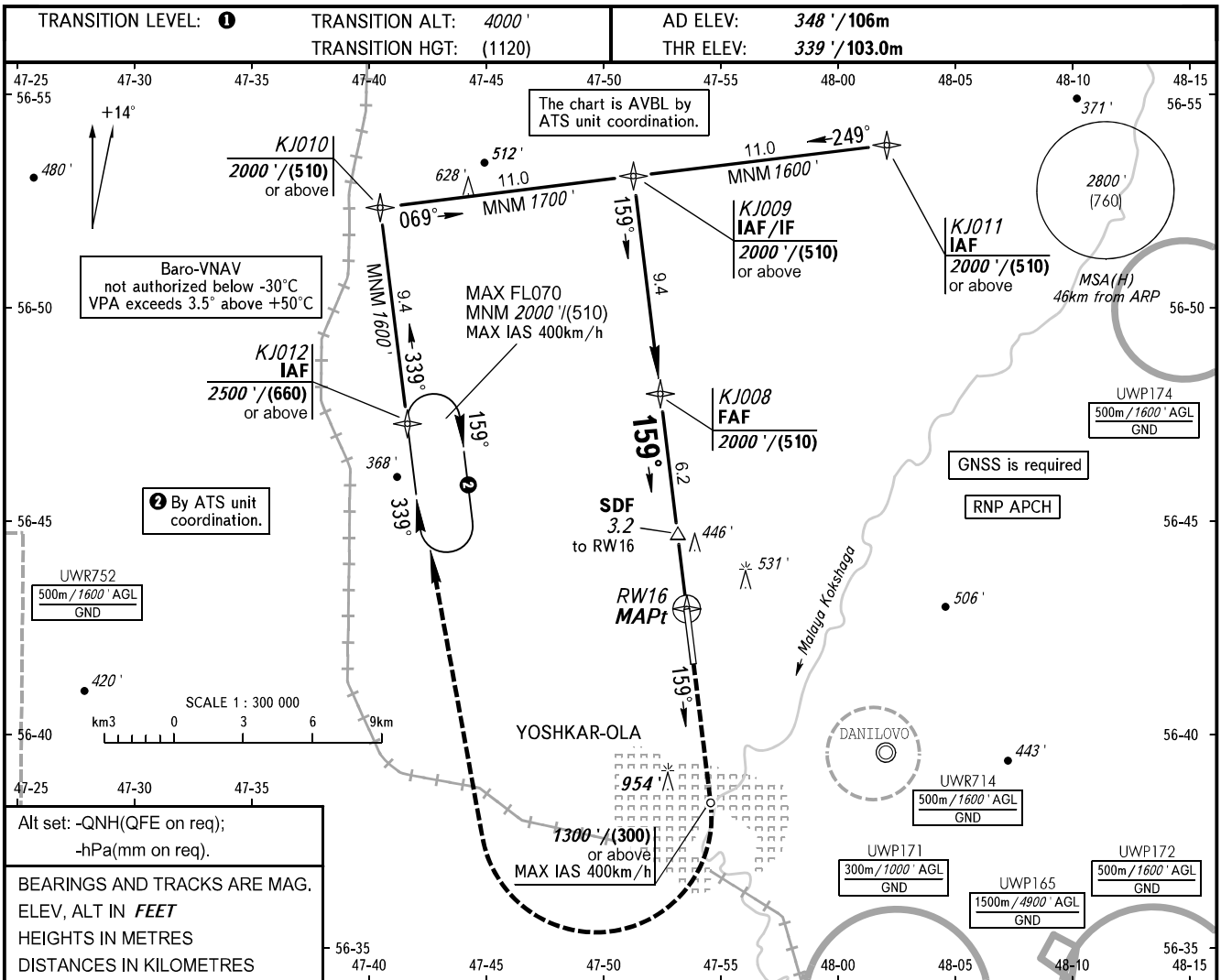


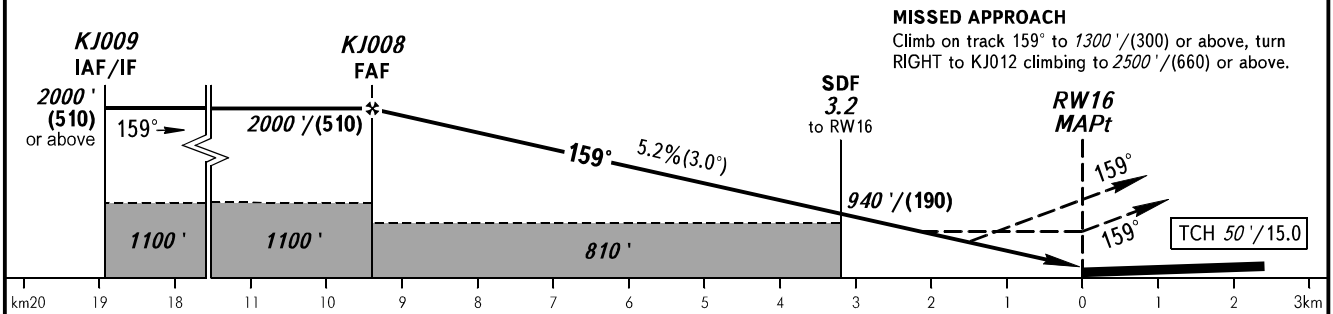
**INSTRUMENT
APPROACH
CHART - ICAO**

VYSHKA **119.700**

YOSHKAR-OLA, RUSSIA
YOSHKAR-OLA
RNP RWY 16



DIST to RW16	9.4	8.0	6.0	4.0	2.0
ALTITUDE	2000'	1755'	1415'	1070'	730'



OCA(H)		A	B	C	D
Straight-in Approach	LNAV/VNAV	600' (260')	610' (270')	620' (280')	630' (290')
	LNAV	760' (420')	760' (420')	760' (420')	760' (420')
Circling		830' (480')	840' (490')	1350' (1010')	1350' (1010')

1 TRANSITION LEVEL:
 - FL050 when QNH is 1013 hPa (760mm mercury column) or above;
 - FL060 when QNH is 977 hPa (733mm mercury column) or above, but less than 1013 hPa (760mm mercury column);
 - FL070 when QNH is less than 977 hPa (733mm mercury column).
WARNING
 MAPt at RW16. Timing not authorized for defining MAPt.

GROUND SPEED	km/h	150	180	210	240	270	300	330	360	390
RATE OF DESCENT	m/s	2.2	2.6	3.0	3.5	3.9	4.3	4.8	5.2	5.6
	ft/min	427	512	597	682	768	853	938	1024	1109