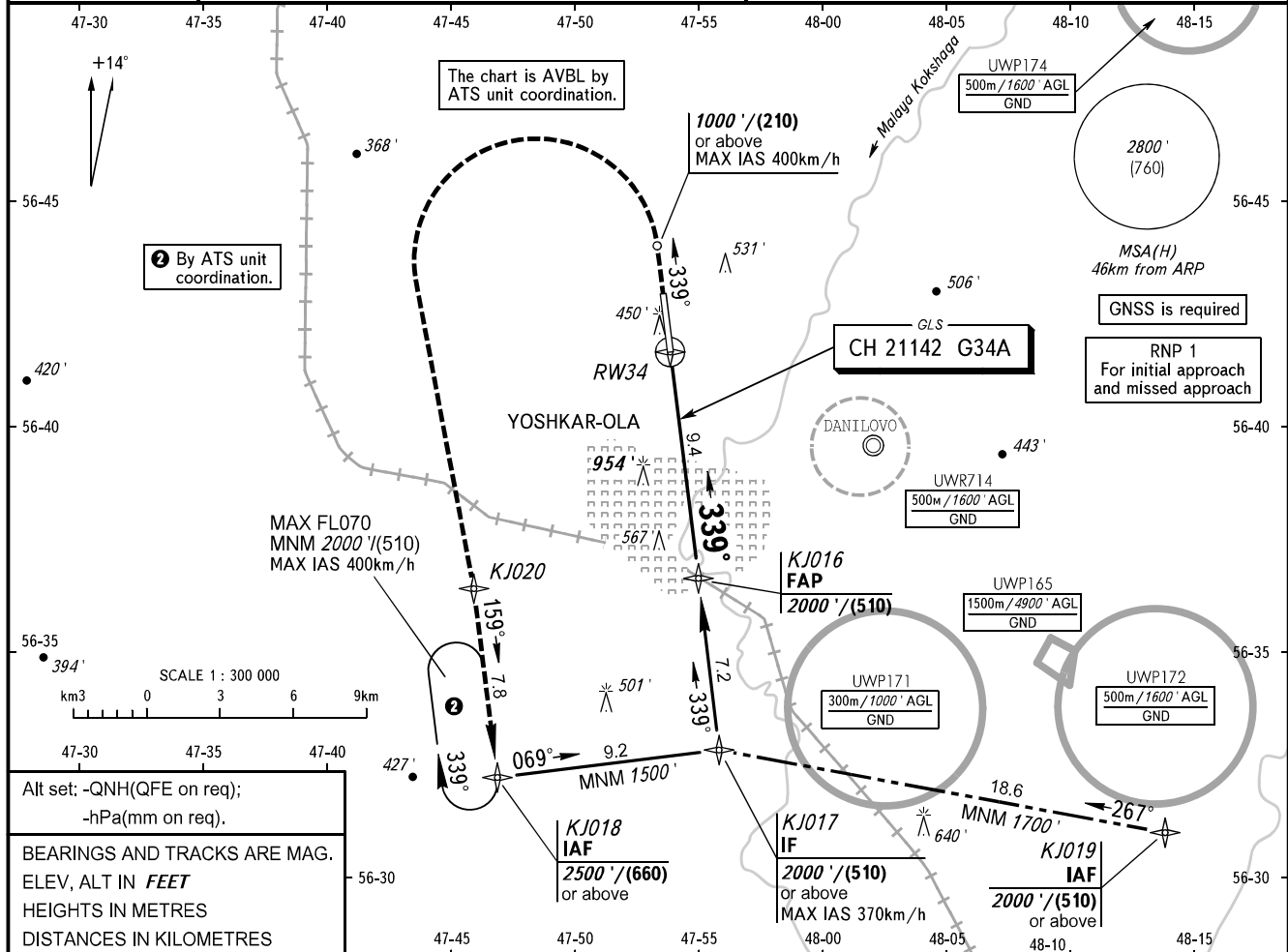


**INSTRUMENT
APPROACH
CHART - ICAO**

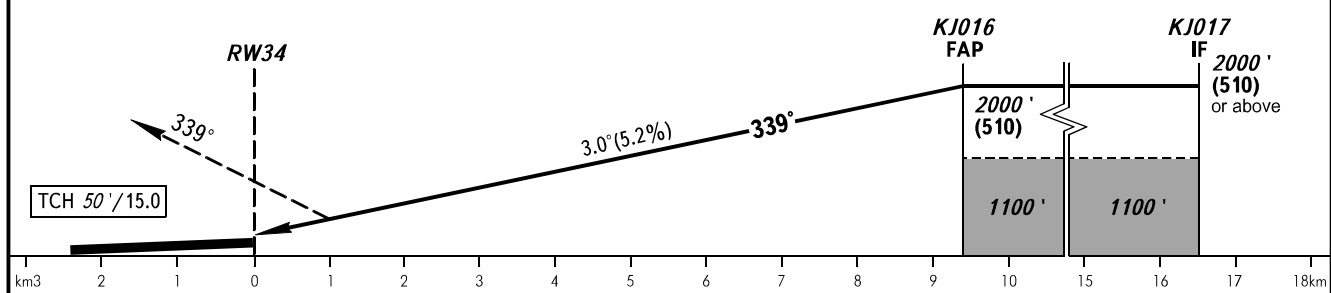
VYSHKA 119.700

YOSHKAR-OLA, RUSSIA
YOSHKAR-OLA
GLS RWY 34

GBAS CH 21142 G34A	TRANSITION LEVEL: ①	TRANSITION ALT: 4000'	AD ELEV: 348' / 106m
		TRANSITION HGT: (1120)	THR ELEV: 339' / 103.5m



MISSED APPROACH
Climb on track 339° to 1000' / (210) or above, turn LEFT to KJ020, then proceed to KJ018 climbing to 2500' / (660) or above.



OCA(H)		A	B	C	D
Straight-in	CAT I	554' (214')	563' (224')	573' (234')	583' (244')
Approach					
Circling		830' (490')	840' (500')	1350' (1010')	1350' (1010')

① TRANSITION LEVEL:
 - FL050 when QNH is 1013 hPa (760mm mercury column) or above;
 - FL060 when QNH is 977 hPa (733mm mercury column) or above, but less than 1013 hPa (760mm mercury column);
 - FL070 when QNH is less than 977 hPa (733mm mercury column).

GROUND SPEED	km/h	150	180	210	240	270	300	330	360	390
RATE OF DESCENT	m/s	2.2	2.6	3.0	3.5	3.9	4.3	4.8	5.2	5.6
	ft/min	427	512	597	682	768	853	938	1024	1109