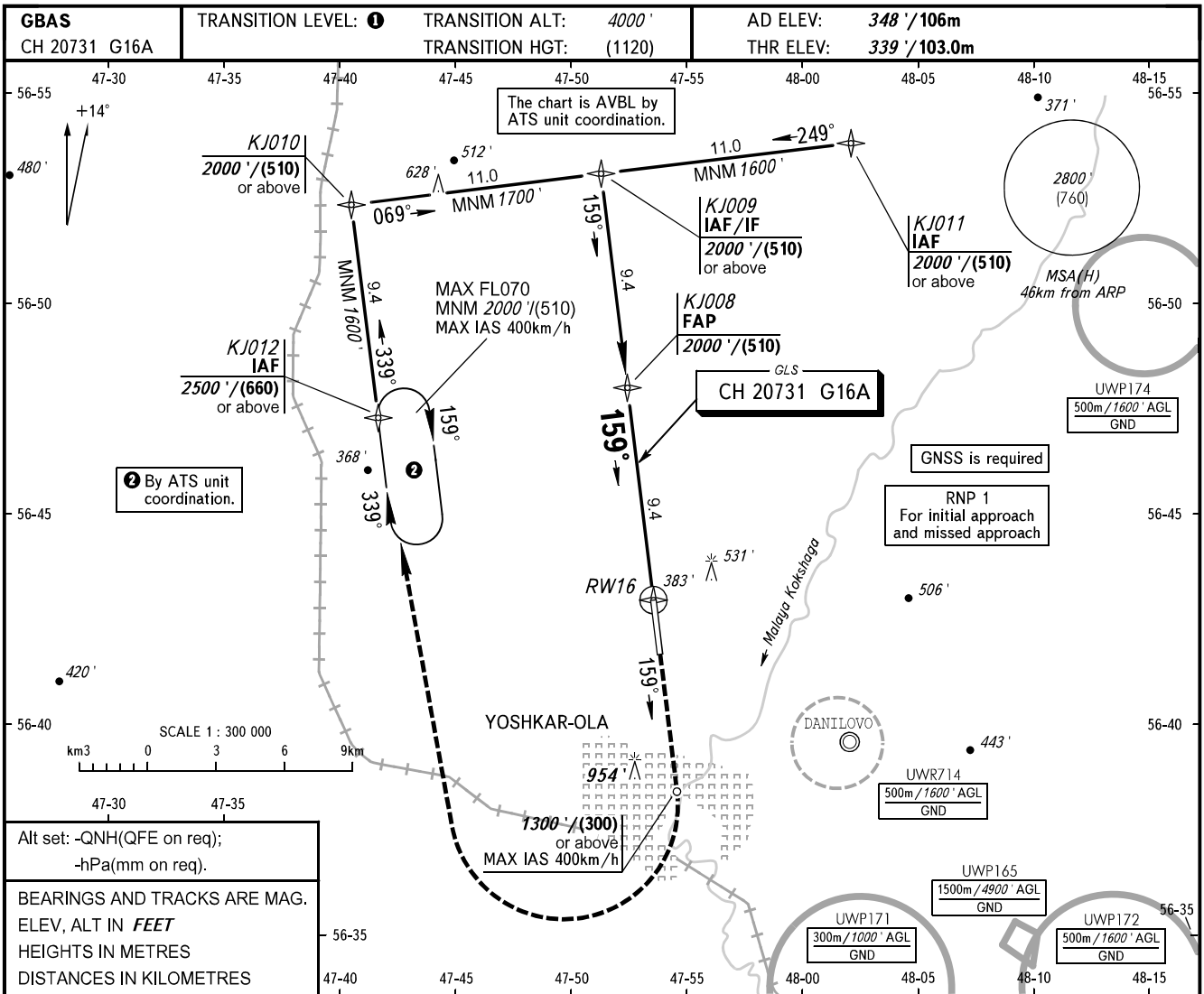


**INSTRUMENT  
APPROACH  
CHART - ICAO**

VYSHKA 119.700

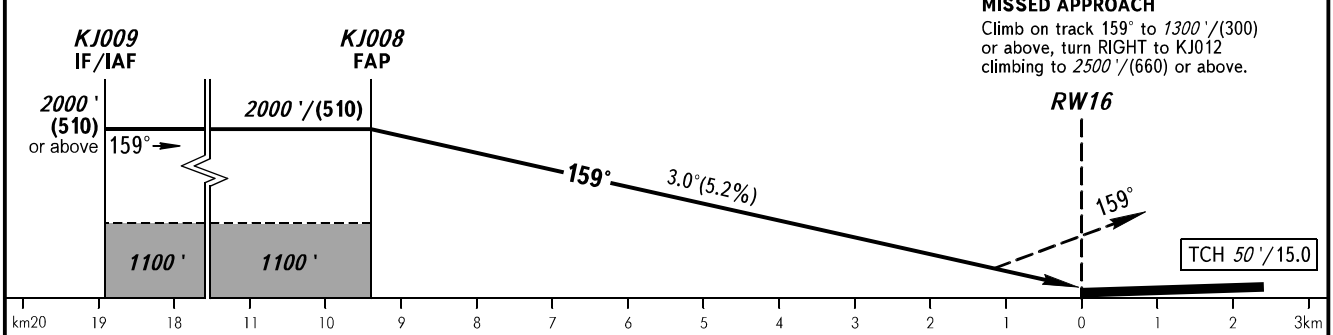
**YOSHKAR-OLA, RUSSIA  
YOSHKAR-OLA  
GLS RWY 16**



Alt set: -QNH(QFE on req);  
-hPa(mm on req).  
BEARINGS AND TRACKS ARE MAG.  
ELEV, ALT IN FEET  
HEIGHTS IN METRES  
DISTANCES IN KILOMETRES

② By ATS unit coordination.

**MISSED APPROACH**  
Climb on track 159° to 1300'/(300) or above, turn RIGHT to KJ012 climbing to 2500'/(660) or above.



OCA(H)		A	B	C	D
Straight-in	CAT I	514' (176')	524' (186')	534' (195')	544' (205')
Approach					
Circling		830' (480')	840' (490')	1350' (1010')	1350' (1010')

① TRANSITION LEVEL:  
- FL050 when QNH is 1013 hPa (760mm mercury column) or above;  
- FL060 when QNH is 977 hPa (733mm mercury column) or above, but less than 1013 hPa (760mm mercury column);  
- FL070 when QNH is less than 977 hPa (733mm mercury column).

GROUND SPEED	km/h	150	180	210	240	270	300	330	360	390
RATE OF DESCENT	m/s	2.2	2.6	3.0	3.5	3.9	4.3	4.8	5.2	5.6
RATE OF DESCENT	ft/min	427	512	597	682	768	853	938	1024	1109

CHANGE: Heading