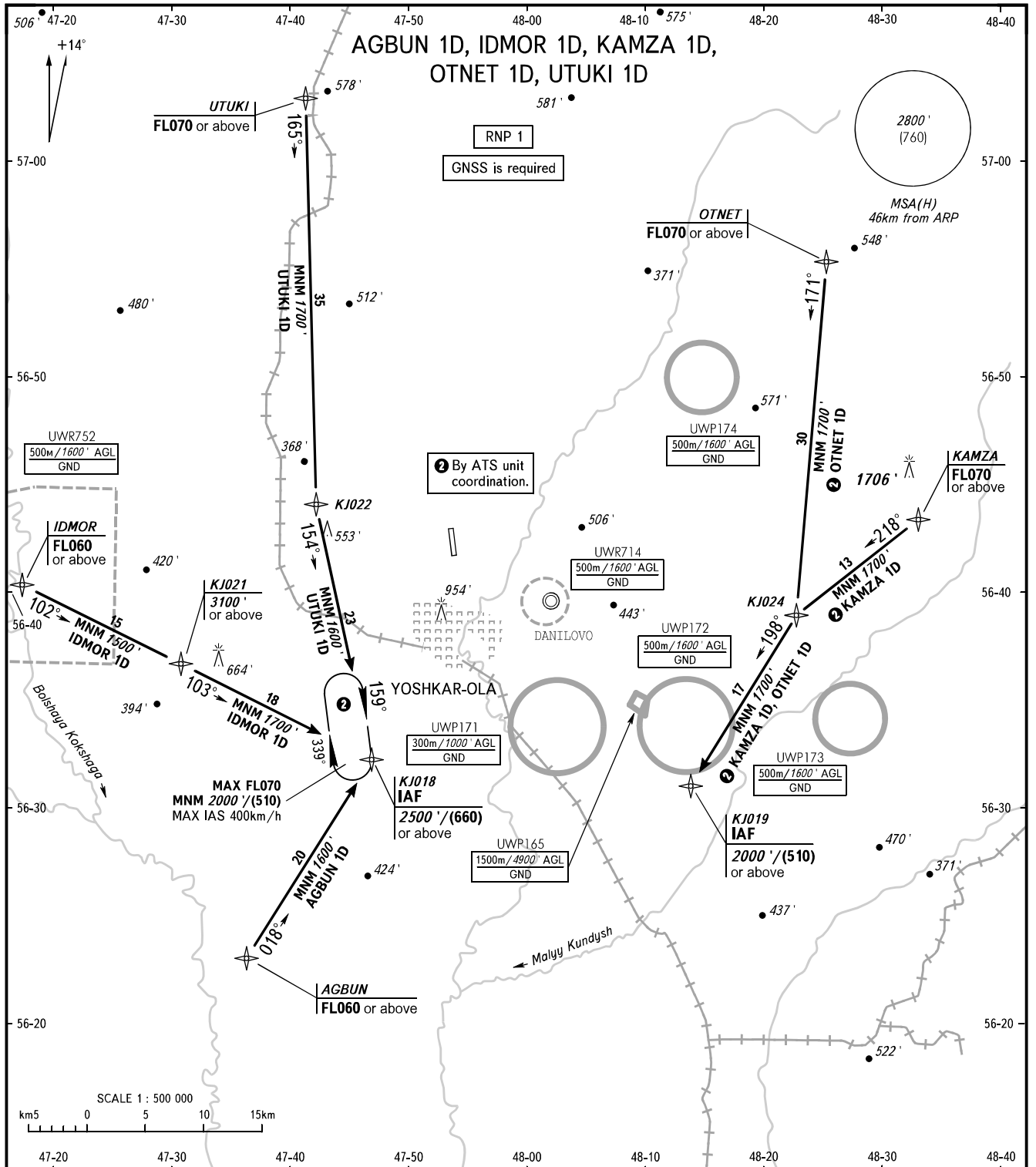


STANDARD ARRIVAL CHART
INSTRUMENT (STAR) - ICAO

YOSHKAR-OLA, RUSSIA
YOSHKAR-OLA
RNP RWY 34

TRANSITION
LEVEL : **1**



VYSHKA **119.700**

- 1** TRANSITION LEVEL:
- FL050 when QNH is 1013 hPa (760mm mercury column) or above;
 - FL060 when QNH is 977 hPa (733mm mercury column) or above, but less than 1013 hPa (760mm mercury column);
 - FL070 when QNH is less than 977 hPa (733mm mercury column).

BEARINGS AND TRACKS ARE MAGNETIC
ALTITUDES AND ELEVATIONS IN **FEET**
HEIGHTS IN METRES
DISTANCES IN KILOMETRES

Alt set: -QNH(QFE on req);
-hPa(mm on req).