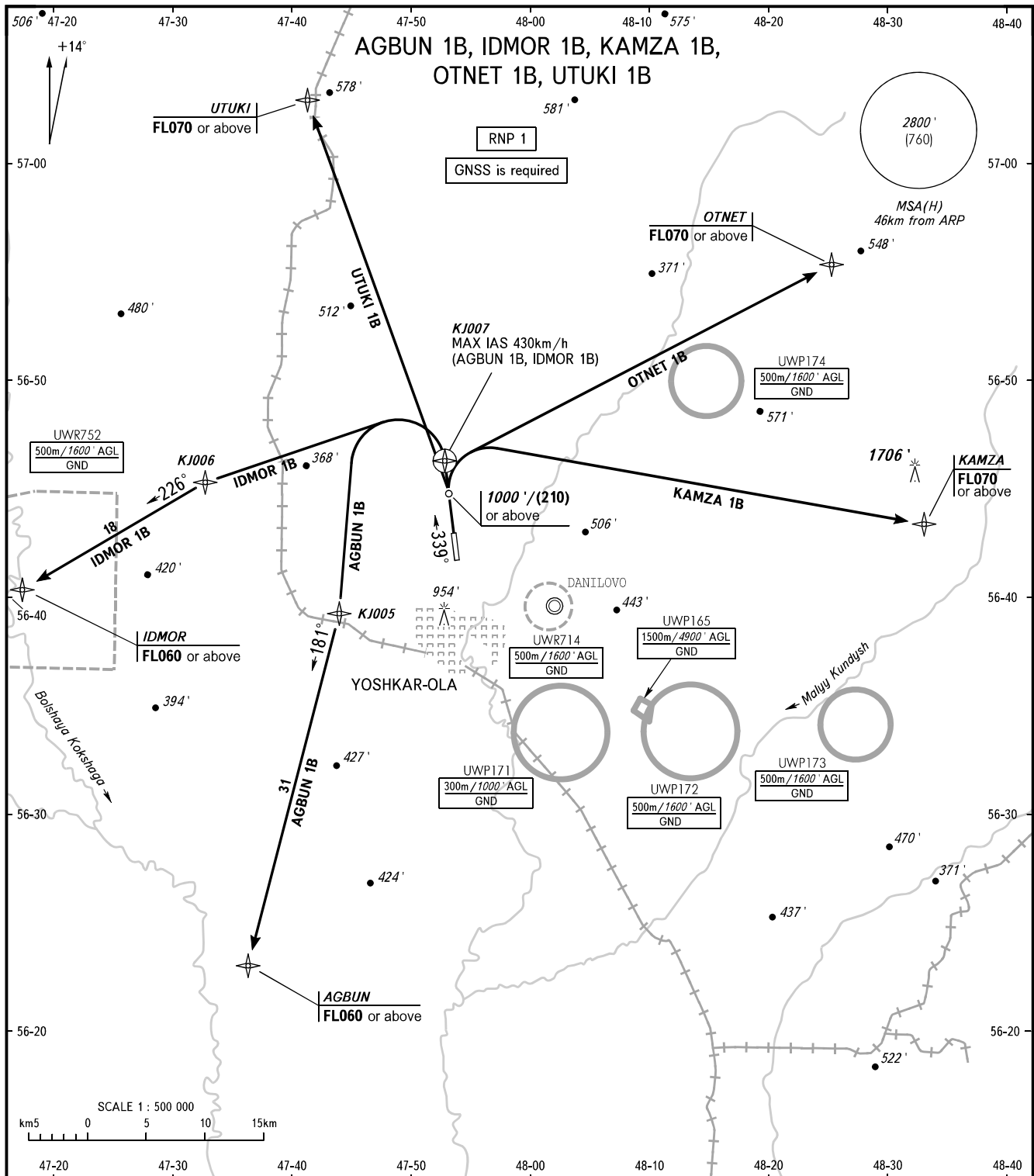


STANDARD DEPARTURE CHART
INSTRUMENT (SID) - ICAO

TRANSITION ALT: **4000'**
TRANSITION HGT: **(1120)**

YOSHKAR-OLA, RUSSIA
YOSHKAR-OLA
RNP RWY 34



VYSHKA **119.700**

WARNING:

- The minimum climb gradients (required due to the airspace structure only) are as follows:
 - 3.7% up to FL060 for SID IDMOR 1B;
 - 4.3% up to FL070 for SID KAMZA 1B;
 - 4.8% up to FL070 for SID OTNET 1B;
 - 5.2% up to FL070 for SID UTUKI 1B.
- KAMZA 1B, OTNET 1B are AVBL by ATS unit coordination.

BEARINGS AND TRACKS ARE MAGNETIC
ALTITUDES AND ELEVATIONS IN **FEET**
HEIGHTS IN METRES
DISTANCES IN KILOMETRES

Alt set: -QNH(QFE on req);
-hPa(mm on req).