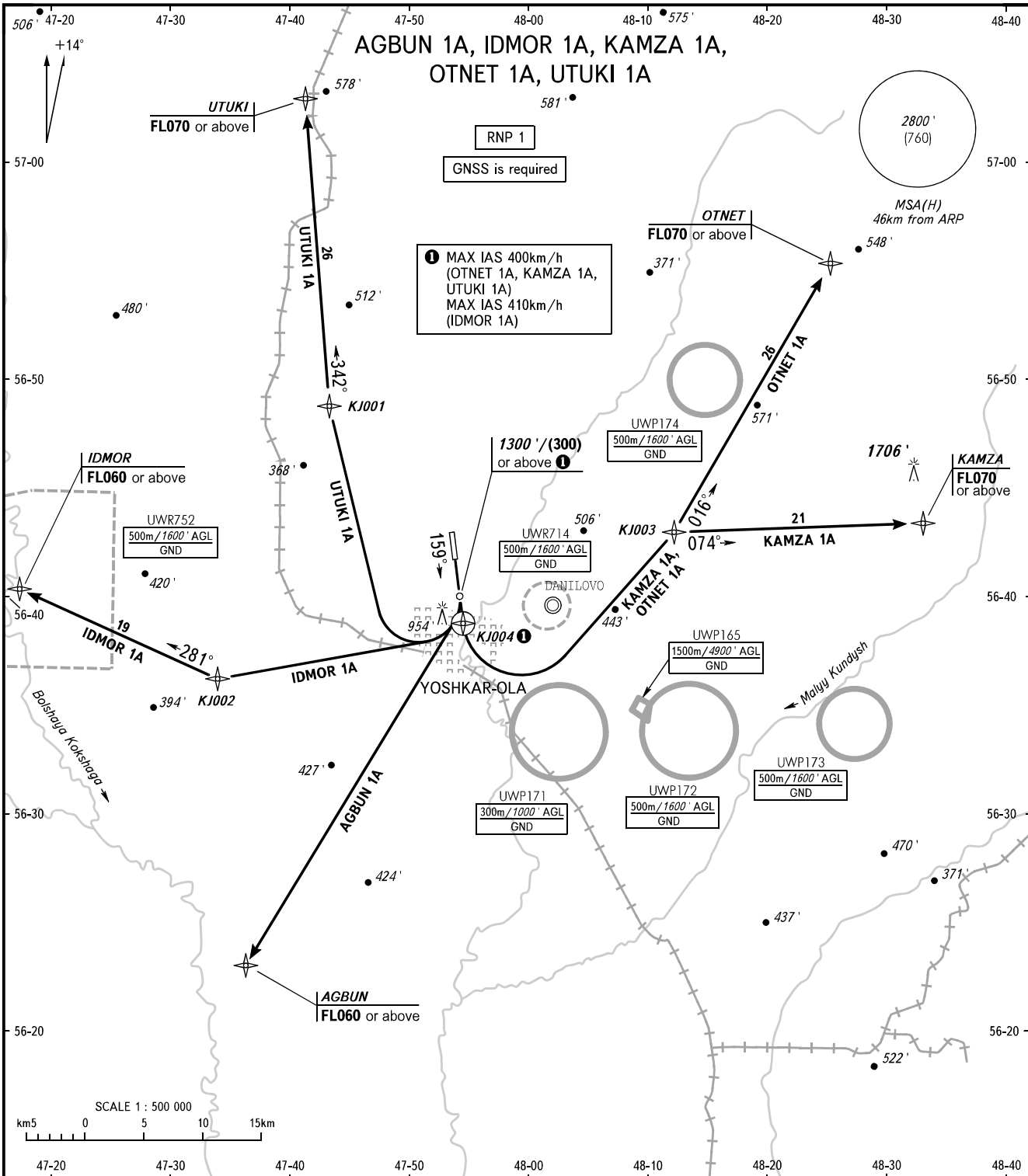


STANDARD DEPARTURE CHART
INSTRUMENT (SID) - ICAO

TRANSITION ALT: **4000'**
TRANSITION HGT: **(1120)**

YOSHKAR-OLA, RUSSIA
YOSHKAR-OLA
RNP RWY 16



1 MAX IAS 400km/h
(OTNET 1A, KAMZA 1A,
UTUKI 1A)
MAX IAS 410km/h
(IDMOR 1A)

RNP 1
GNSS is required

- WARNING:**
- The minimum climb gradients (required due to the airspace structure only) are as follows:
 - 4.3% up to FL060 for SID AGBUN 1A;
 - 3.7% up to FL060 for SID IDMOR 1A;
 - 3.6% up to FL070 for SID OTNET 1A;
 - 4.0% up to FL070 for SID KAMZA 1A.
 - KAMZA 1A, OTNET 1A are AVBL by ATS unit coordination.

VYSHKA **119.700**

BEARINGS AND TRACKS ARE MAGNETIC
ALTITUDES AND ELEVATIONS IN **FEET**
HEIGHTS IN METRES
DISTANCES IN KILOMETRES

Alt set: -QNH(QFE on req);
-hPa(mm on req).

CHANGE: Heading