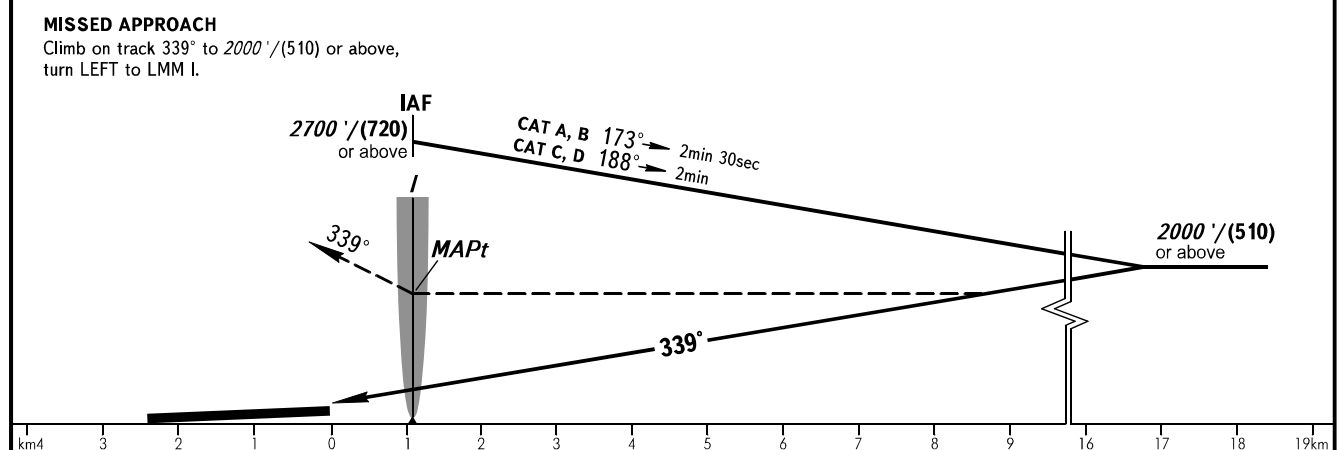
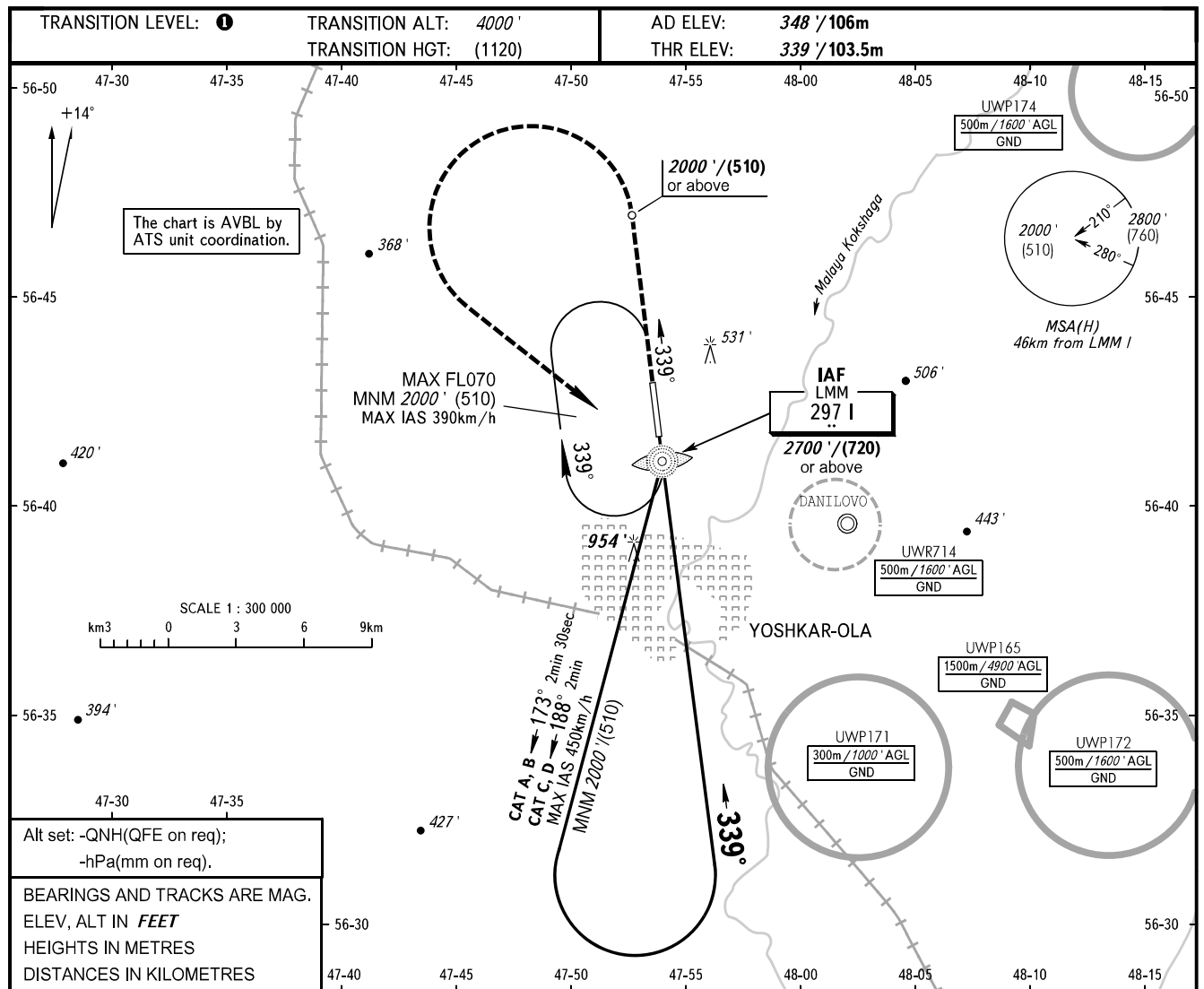


**INSTRUMENT
APPROACH
CHART - ICAO**

VYSHKA **119.700**

YOSHKAR-OLA, RUSSIA
YOSHKAR-OLA
NDB Y RWY 34



| OCA(H) | | A | B | C | D |
|----------------------|--|--------------|--------------|---------------|---------------|
| Straight-in Approach | | 1210' (870') | 1210' (870') | 1210' (870') | 1210' (870') |
| | | | | | |
| Circling | | 1210' (870') | 1210' (870') | 1350' (1010') | 1350' (1010') |
| | | | | | |

01 TRANSITION LEVEL:
- FL050 when QNH is 1013 hPa (760mm mercury column) or above;
- FL060 when QNH is 977 hPa (733mm mercury column) or above,
but less than 1013 hPa (760mm mercury column);
- FL070 when QNH is less than 977 hPa (733mm mercury column).

WARNING:
1. Turn before MAPt is PROHIBITED.
2. MAPt at LMM I. Timing not authorized for defining MAPt.