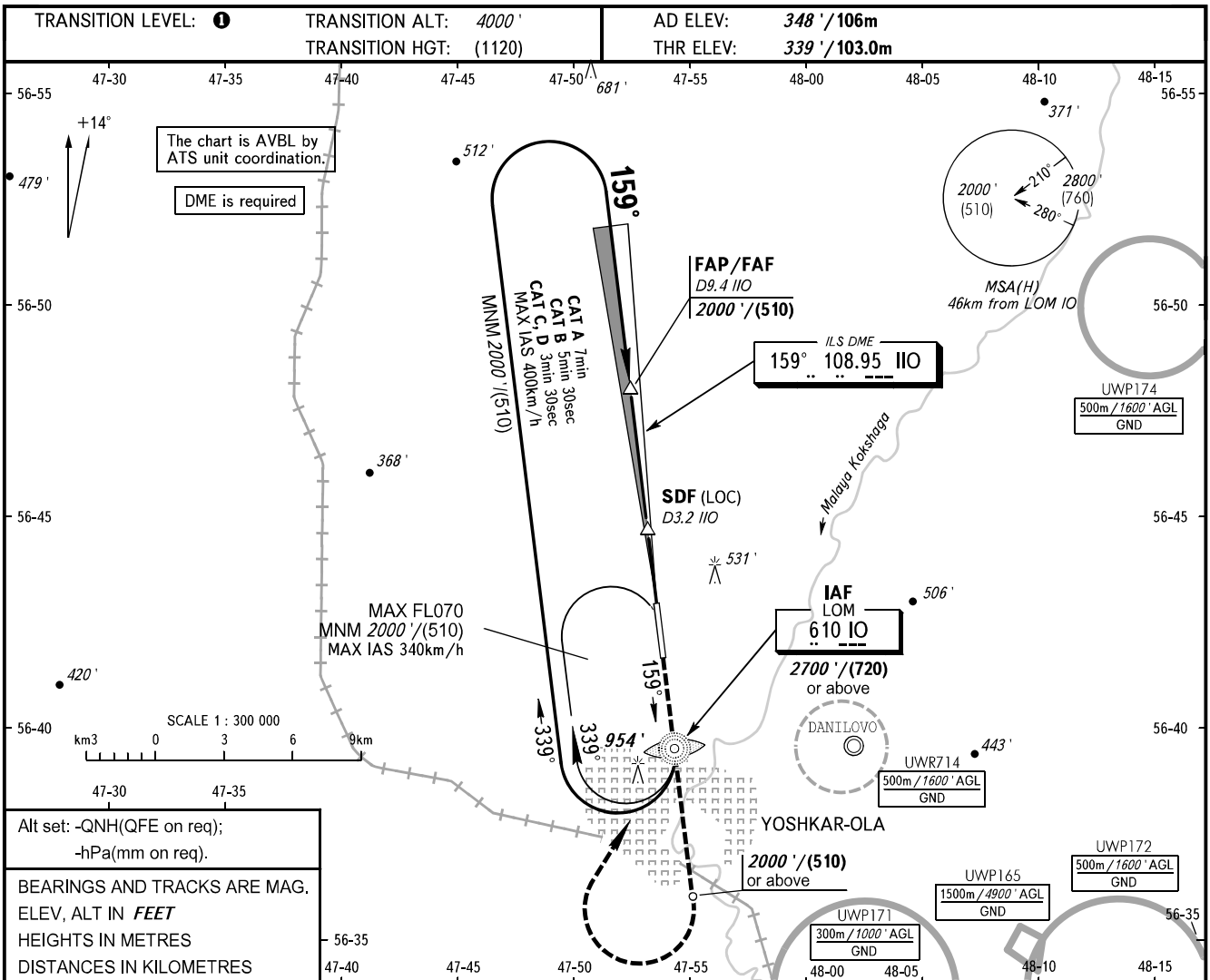


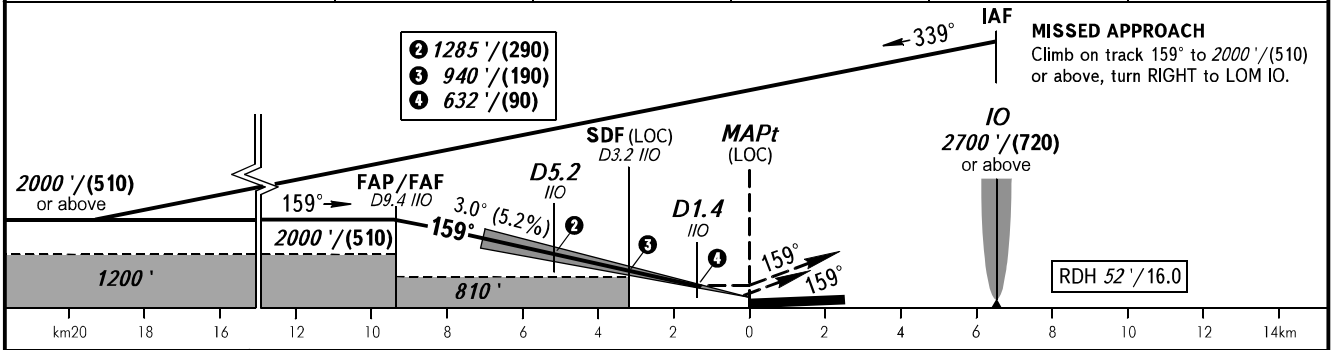
**INSTRUMENT
APPROACH
CHART - ICAO**

VYSHKA 119.700

**YOSHKAR-OLA, RUSSIA
YOSHKAR-OLA
ILS W, LOC W RWY 16**



| | | | | | |
|----------|-------|-------|-------|-------|------|
| DME IIO | 9.4 | 8.0 | 6.0 | 4.0 | 2.0 |
| ALTITUDE | 2000' | 1770' | 1430' | 1080' | 740' |



| OCA(H) | | A | B | C | D | | | | | | |
|----------------------|----------|-------------|-------------|---------------|---------------|------|------|------|------|------|------|
| Straight-in Approach | LOC | 514' (176') | 524' (186') | 534' (195') | 544' (205') | | | | | | |
| | With SDF | 760' (420') | 760' (420') | 760' (420') | 760' (420') | | | | | | |
| | WO SDF | 810' (470') | 810' (470') | 810' (470') | 810' (470') | | | | | | |
| Circling | | 830' (490') | 840' (500') | 1350' (1010') | 1350' (1010') | | | | | | |
| GROUND SPEED | | km/h | 150 | 180 | 210 | 240 | 270 | 300 | 330 | 360 | 390 |
| RATE OF DESCENT | | m/s | 2.2 | 2.6 | 3.0 | 3.5 | 3.9 | 4.3 | 4.8 | 5.2 | 5.6 |
| | | ft/min | 427 | 512 | 597 | 682 | 768 | 853 | 938 | 1024 | 1109 |
| FAF - MAPt 9.4 km | | min:sec | 3.45 | 3.08 | 2.41 | 2.21 | 2.05 | 1.53 | 1.42 | 1.34 | 1.27 |

1 TRANSITION LEVEL:
 - FL050 when QNH is 1013 hPa (760mm mercury column) or above;
 - FL060 when QNH is 977 hPa (733mm mercury column), but less than 1013 hPa (760mm mercury column);
 - FL070 when QNH is less than 977 hPa (733mm mercury column).
WARNING:
 1. When executing only LOC APCH, turn before passing MAPt is PROHIBITED. MAPt at RWY 16 THR.
 2. ILS DME IIO reads zero at RWY 16 THR.