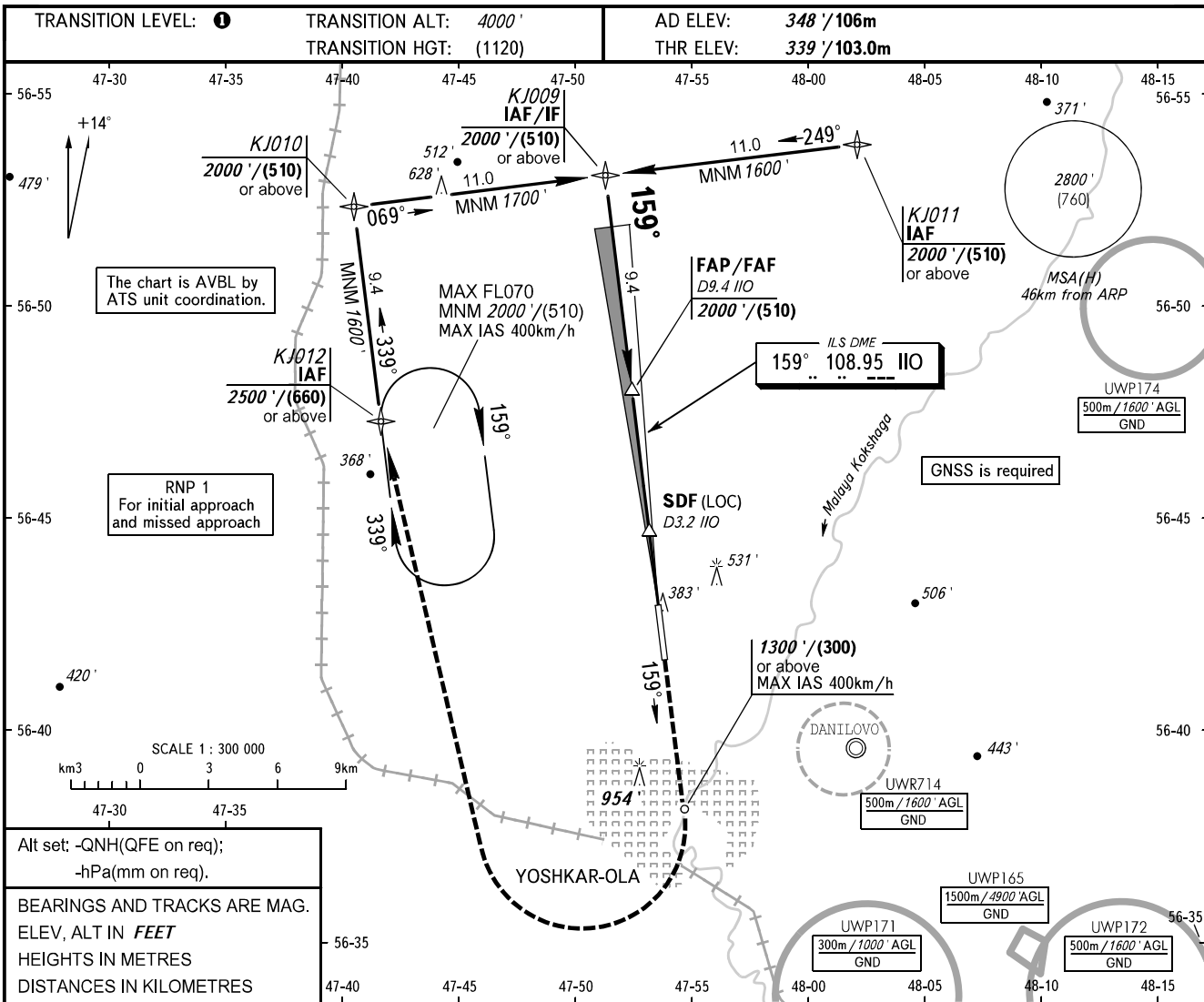


**INSTRUMENT
APPROACH
CHART - ICAO**

VYSHKA 119.700

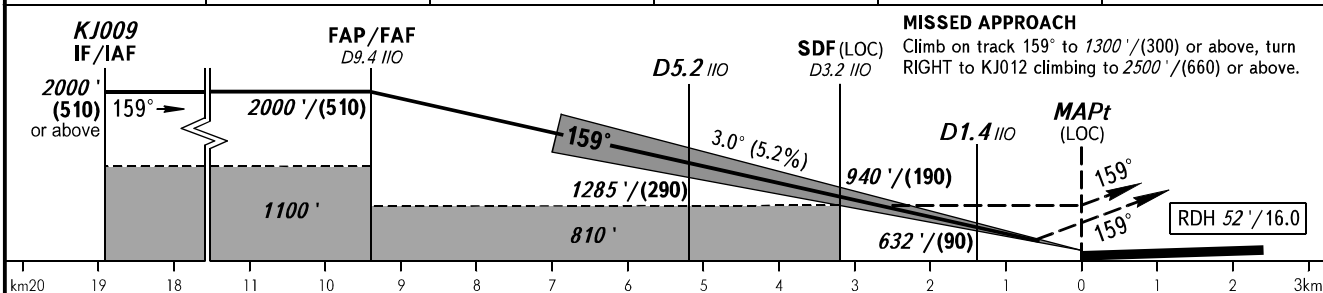
**YOSHKAR-OLA, RUSSIA
YOSHKAR-OLA
ILS Z, LOC Z RWY 16**



Alt set: -QNH(QFE on req);
-hPa(mm on req).

BEARINGS AND TRACKS ARE MAG.
ELEV, ALT IN FEET
HEIGHTS IN METRES
DISTANCES IN KILOMETRES

DME IIO	9.4	8.0	6.0	4.0	2.0
ALTITUDE	2000'	1770'	1430'	1080'	740'



OCA(H)		A	B	C	D
Straight-in Approach	LOC	514' (176')	524' (186')	534' (195')	544' (205')
	With SDF	760' (420')	760' (420')	760' (420')	760' (420')
	WO SDF	810' (470')	810' (470')	810' (470')	810' (470')
Circling		830' (490')	840' (500')	1350' (1010')	1350' (1010')

TRANSITION LEVEL:

- FL050 when QNH is 1013 hPa (760mm mercury column) or above;
- FL060 when QNH is 977 hPa (733mm mercury column) or above, but less than 1013 hPa (760mm mercury column);
- FL070 when QNH is less than 977 hPa (733mm mercury column).

WARNING:

1. When executing only LOC APCH, turn before passing MAPt is PROHIBITED. MAPt at RWY 16 THR.
2. ILS DME IIO reads zero at RWY 16 THR.

GROUND SPEED	km/h	150	180	210	240	270	300	330	360	390	
RATE OF DESCENT	m/s	2.2	2.6	3.0	3.5	3.9	4.3	4.8	5.2	5.6	
	ft/min	427	512	597	682	768	853	938	1024	1109	
FAF - MAPt	9.4 km	min:sec	3.45	3.08	2.41	2.21	2.05	1.53	1.42	1.34	1.27

CHANGE: Heading